



Beechdale Road, Brixton, SW2

3 bedroom flat - conversion for sale

£715,000

Share of Freehold

Property Details

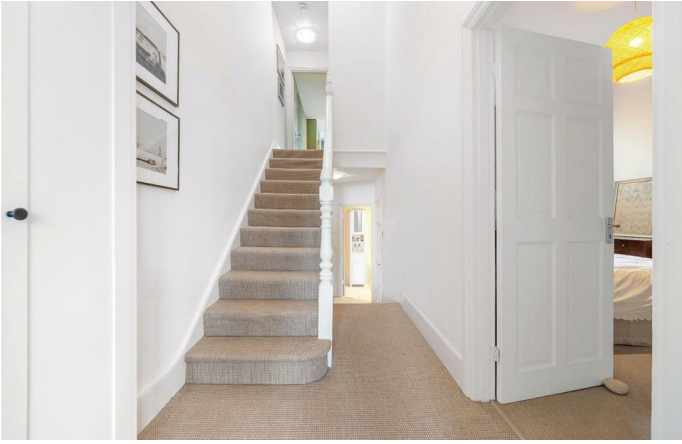
A spacious and characterful three bedroom Victorian flat on a highly sought-after street. Lovingly cared for this charming home is beautifully presented. Set to the upper floors it is bright and airy with added privacy due to the elevated position. Bathed in natural light through multiple sash windows the reception is an inviting heart of the home with high ceilings and original fireplace. A separate dine-in kitchen is fresh and contemporary with cabinets integrating appliances and providing ample storage. Dine in comfort with leafy views over the nearby gardens. All three bedrooms are nestled peacefully to the rear of the home away from the already quiet street. Set to opposing floors for a desirable level of privacy, the two larger bedrooms are both soothing spaces with leafy views, whilst the third is a versatile space, currently a charming walk-in wardrobe. A neutral bathroom has a bathtub plus overhead shower. The WC sits adjacent, with the potential to combine into one if preferred. A loft provides ample storage with the potential to grow into the home by extending into the loft, subject to permissions, with precedent set on the road.

Features

- Three bedrooms
- Victorian conversion
- Over 1,000 square feet split over the upper floors
- Potential to extend STNP
- Beautifully presented
- Quiet popular residential street
- Access to Brixton and Herne Hill
- Brockwell Park in walking distance
- Rapid transport links
- Share of freehold

Council tax band D EPC rating D (63)





Beechdale Road, Brixton, SW2

Beechdale Road, SW2
3 Bedroom Flat

APPROXIMATE GROSS INTERNAL AREA WITH LOFT: **1389.7 SQ FT / 129 SQ M**

APPROXIMATE GROSS INTERNAL AREA WITHOUT: **1024 SQ FT / 95 SQ M**



While we try our very best, floor plans are produced as a guide only and we take no responsibility for the precise accuracy with which any property is represented.

Beechdale Road, Brixton, SW2

