



Tulse Hill, Brixton, SW2

2 bedroom flat - purpose built for sale

£635,000

Leasehold

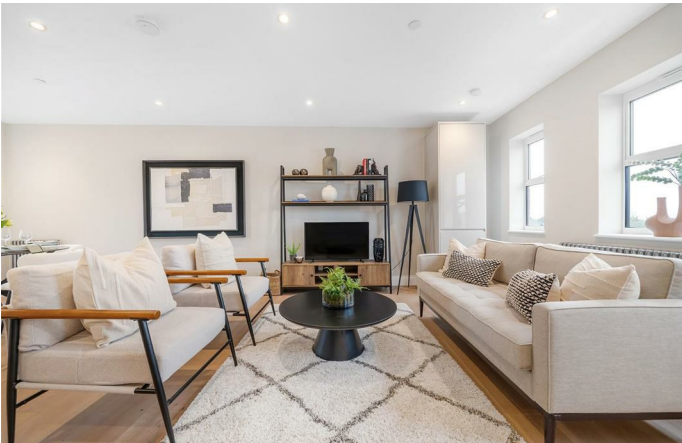
Property Details

An exceptional two bedroom, two bathroom apartment set back from the street with a private terrace. This impressive new home forms part of a gated development designed with attention to detail. This sizeable third floor apartment has a bright and airy feel, with additional privacy due to the elevated position. The expansive open-plan reception is a fantastic entertaining space with high ceilings enhancing the cavernous feel. Down lighting and timber floors in warming shades create a welcoming ambience. A sleek kitchen integrates appliances and generous storage, topped with work surfaces with worktop lighting setting an evening mood. A large pane glass door leads out to the terrace with views of the city skyline in the distance, this low-maintenance spot is sheltered by glass balustrades, ideal for watching the sun set over the rooftops. Both bedrooms are comfortable doubles, with a calming yet airy ambience and plush carpets, the principal has the luxury of an en-suite shower room. The main bathroom has a bathtub with overhead shower set against beautiful marbled tiling. The home benefits from a large hallway cupboard, video entry phone, high energy efficiency and ten-year build warranty.

Features

- Two double bedrooms
- Two bathrooms
- Private terrace with city views
- Gated new build apartment
- Over 825 square feet
- Supermarket, restaurants and cafes on the doorstep
- Central Brixton and Herne Hill both a ten-minute stroll
- Brockwell Park a four-minute walk
- Chain-free
- 10 year build warranty

Council tax band C EPC rating C (80)

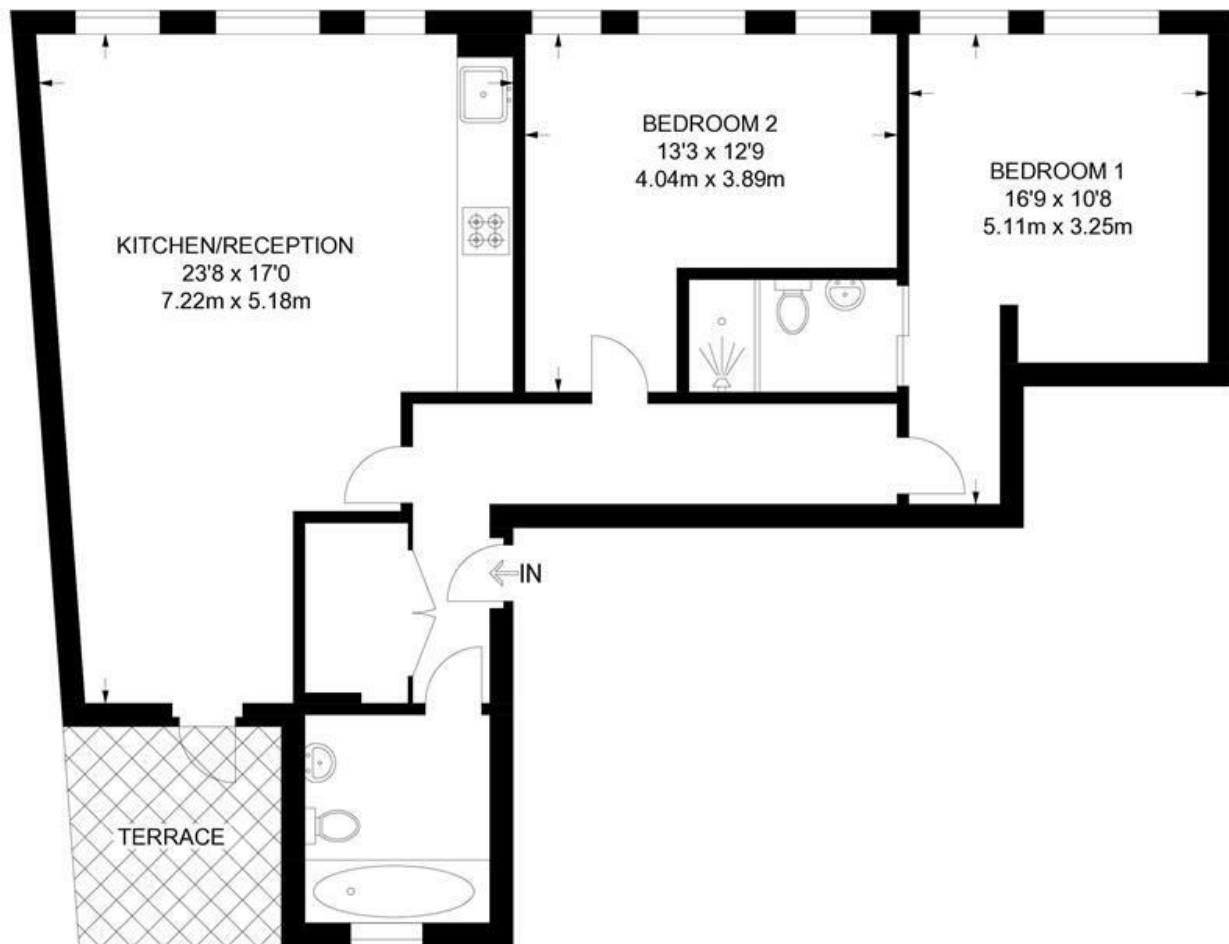




Tulse Hill, Brixton, SW2

Tulse Hill, SW2
2 Bedroom Flat

APPROXIMATE GROSS INTERNAL AREA: **830 SQ FT / 77.1 SQ M**



THIRD FLOOR



While we try our very best, floor plans are produced as a guide only and we take no responsibility for the precise accuracy with which any property is represented.

Tulse Hill, Brixton, SW2

