



**Fitzwilliam Road, Clapham, SW4**

2 bedroom maisonette for sale

**£800,000**

Share of Freehold

## Property Details

A beautifully refurbished two double bedroom, split-level Victorian maisonette with its own private entrance on a desirable street in the sought-after Clapham Old Town. This wonderful home has just undergone extensive renovations creating a striking yet tastefully neutral apartment, split over the upper the floors for additional light and privacy. A wonderfully bright semi-open-plan reception has chevron wooden flooring, high ceilings and multiple sash windows. A bespoke dine-in kitchen has integrated appliances within sleek cabinetry boasting generous storage and plentiful worktops with leafy views. A rarity for period conversions, both bedrooms are doubles of similar proportions, set peacefully over the top floor with cosy carpets. The luxurious bathroom has a rain shower and separate free-standing bathtub set below a skylight, ideal for a relaxing soak under the night sky. This elegant flat is sure to appeal to a wide range of purchasers.

## Features

- Two double bedrooms
- Victorian maisonette
- Own private entrance
- Almost 900 square feet split over two floors
- Fully and tastefully refurbished
- Bright and airy ambience
- Desirable location in Clapham Old Town
- Share of freehold
- Chain-free

Council tax band E    EPC rating C (73)





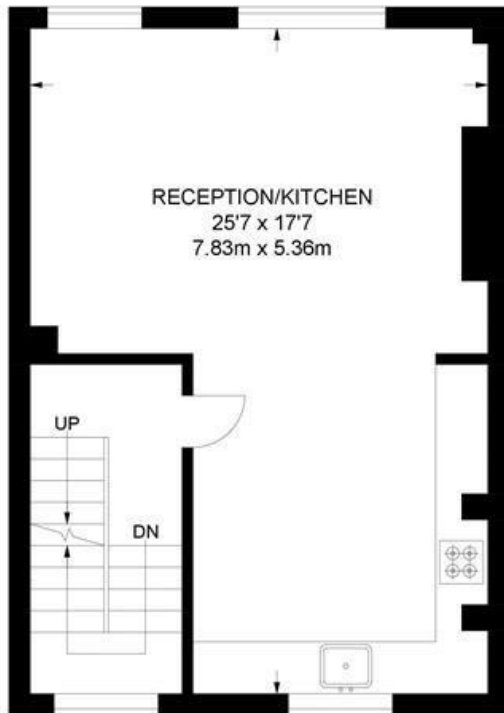


Fitzwilliam Road, Clapham, SW4

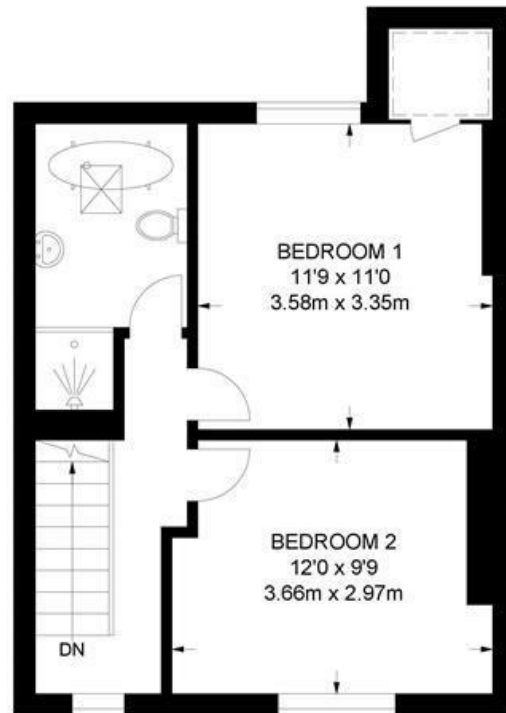
**Fitzwilliam Road, SW4**

**2 Bedroom Maisonette**

APPROXIMATE GROSS INTERNAL AREA: 897 SQ FT / 83 SQ M



FIRST FLOOR



SECOND FLOOR



GROUND FLOOR



While we try our very best, floor plans are produced as a guide only and we take no responsibility for the precise accuracy with which any property is represented.



Fitzwilliam Road, Clapham, SW4

