



Brailsford Road, Brixton, SW2

4 bedroom house - semi-detached for sale

£1,750,000

Freehold

Property Details

An exceptional modern-build house with a total square footage of over 2700 square feet, comprising a majestic, open plan reception and kitchen on the ground floor, with two separate access points onto the wrap around private garden. The house has multiple selling points which include an outside store room, an off street parking space and views of Brockwell Park to name a few. The first, second and third floors consist of a family bathroom and four double bedrooms, one with an en-suite bathroom. Brailsford Road is a Victorian terraced street which is a ten-minute walk to Brixton tube station.

Council tax band F EPC rating B (88)

Features

- Four double bedrooms
- Three bathrooms
- Semi-detached freehold house
- Overlooking Brockwell Park
- Nearly 2800 square feet of internal living space
- Bright and airy atmosphere
- Beautifully finished throughout
- Off-street parking space
- Close to transport links
- Quiet location





Brailsford Road, Brixton, SW2

K

4 Bed house

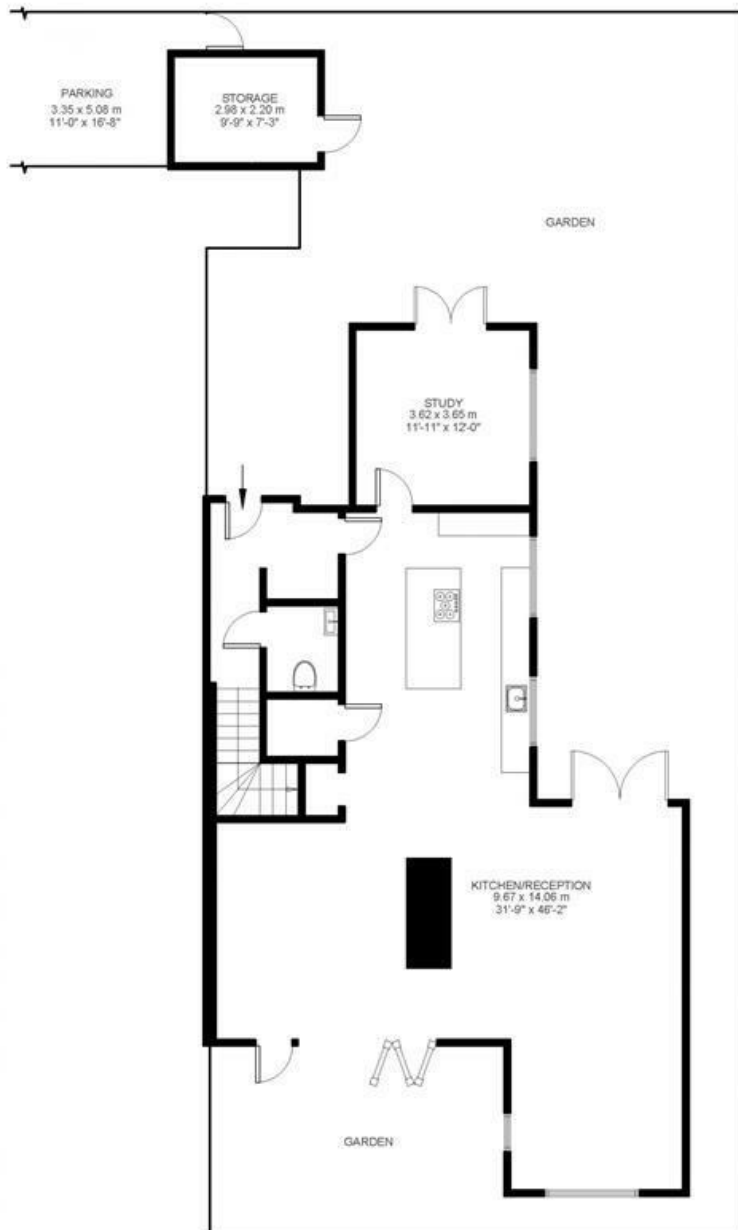
Approx internal area:

2795 sqft 260 sqm

While we do try our very best, floor plans are produced as a guide only and we take no responsibility for the precise accuracy with which any property is represented



Ground Floor



Brailsford Road



First Floor



Second Floor



Third Floor

Brailsford Road, Brixton, SW2

