

Fairmount Road

BRIXTON, SW2



Fairmount Road

Keating Estates are proud to offer two stunning ultramodern chain-free homes, tucked away quietly off Fairmount Road with allocated off-street gated allocated parking spaces and South facing private gardens.

Fairmount Road, Brixton, SW2
4 bedroom House for sale

£1,400,000
Freehold



Features



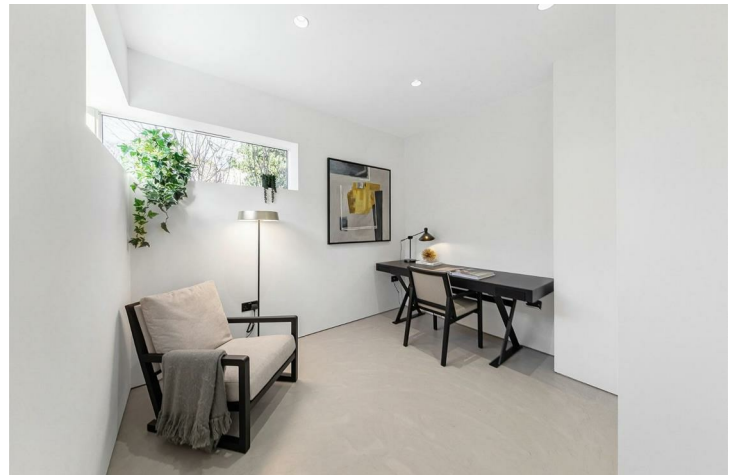
- Ultramodern detached house with South facing gardens
- Four double bedrooms
- Two bathrooms
- Gated off-street allocated parking
- Nearly 1700 square feet of internal living space
- Beautifully finished throughout
- Solar PV and air source heating and cooling system
- Sought-after quiet location
- Freehold
- 10 year Build Zone building warranty



Property details

This remarkable new build home has been thoughtfully created with a stunning architectural finish, attention to detail, contemporary style and sense of pure luxury while being engineered to meet all the requirements of modern living. Accessed via a private driveway, tasteful automatic lighting leads the way to a secure off-street parking space adjacent to the property. Loader Mews feels truly unique – these two impressive houses are a sight to behold with their curved zinc roofing and dark timber cladding. Situated just off Fairmount Road, a highly sought-after residential road just off Brixton Hill, this popular location benefits from a quiet setting as the road wraps around onto Beechdale Road, which results in no through traffic, only allowing access to these particular houses on these two desirable roads. The development is only a short walk away from some of Brixton's most popular primary schools, the local amenities of vibrant Brixton Hill, the ever-popular Brockwell Park and the fantastic variety of nightlife and restaurants on offer in central Brixton. With access to the Victoria line at Brixton tube station also within a ten-minute stroll and Herne Hill a pleasant fifteen-minute walk through the park, the location cannot be overstated.

Internal area: 1685.00 sq ft Council tax band EPC rating A (92)



K

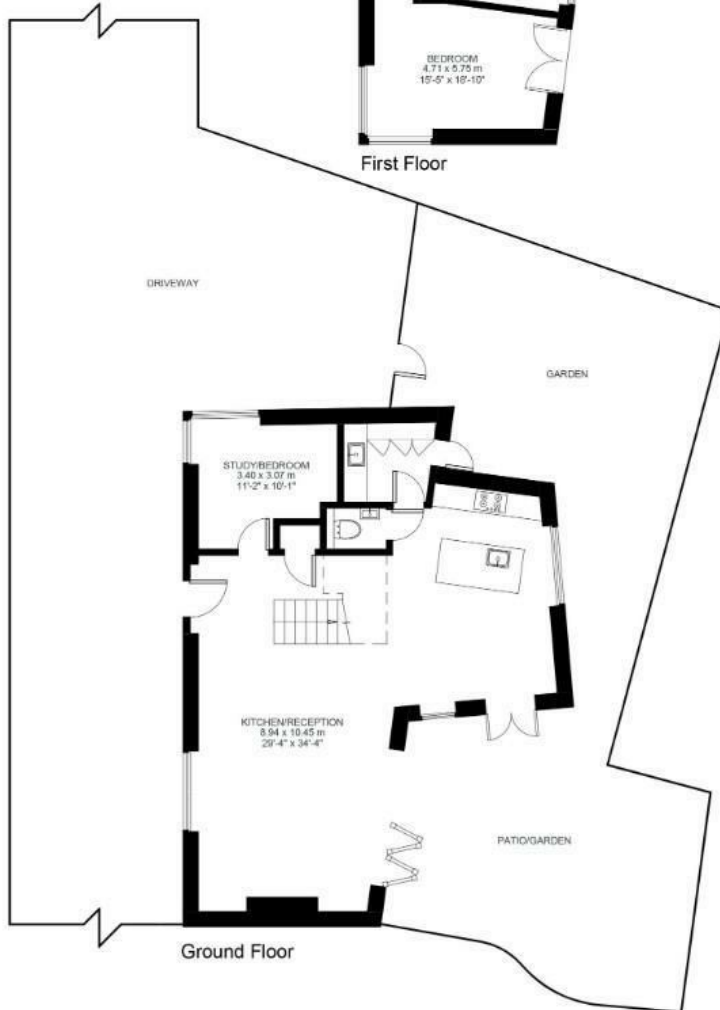
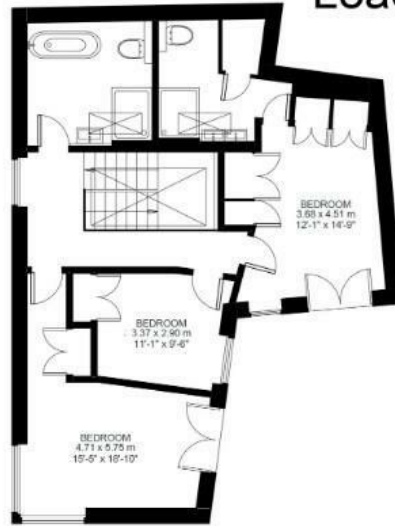
4 Bed house

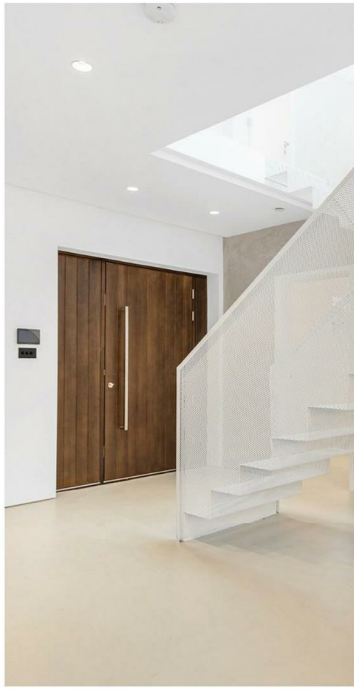
Approx internal area:

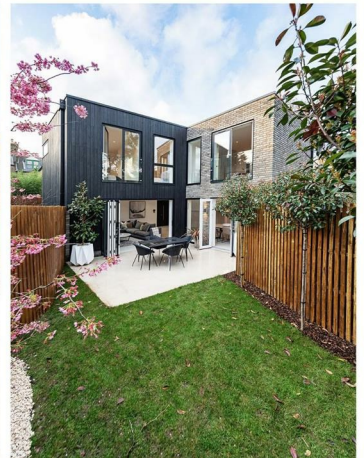
1685 sqft 157 sqm

While we do try our very best, floor plans are produced as a guide only and we take no responsibility for the precise accuracy with which any property is represented

Loader Mews



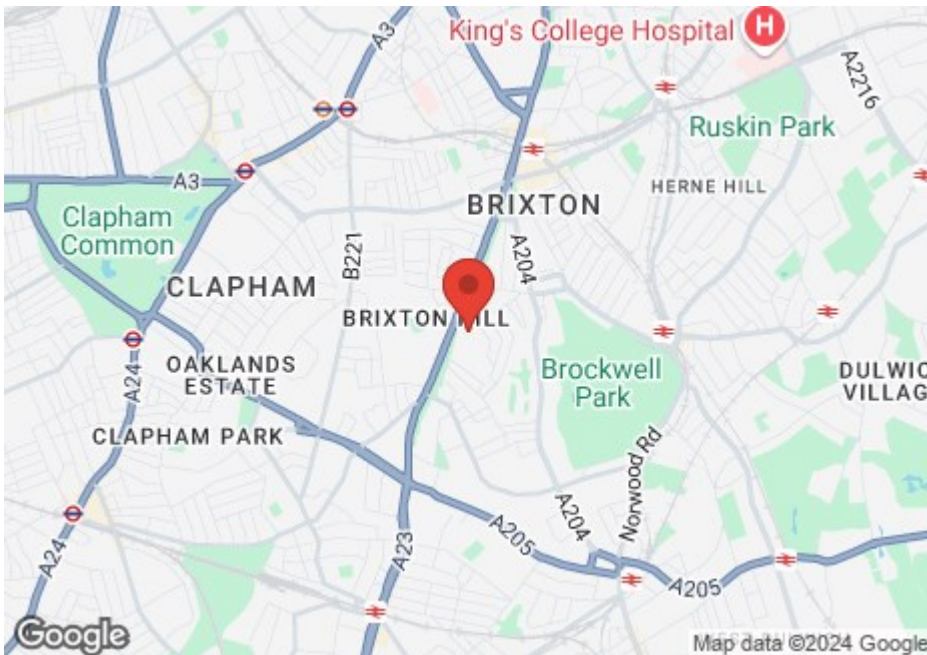






Brixton highlights

Brixton is a melting pot of culture, cuisine and creativity. An explosion of inventive, new restaurants, pop-ups, fashion stores and art galleries sit alongside the many great pubs, music venues and nightclubs that have been around for years. Transport links are excellent, with London Underground (Victoria Line) trains reaching central London in 12 minutes. If you're craving green space, Brockwell Park and its famed Art Deco lido is close by. Brixton brings together all the best things about London and is one of the most vibrant and diverse places to live south of the river.



Nearest stations

- Herne Hill** - 14 mins walk, 0.7 miles
- Brixton** - 18 mins walk, 1 mile
- Brixton BR** - 20 mins walk, 1.1 miles
- Tulse Hill** - 22 mins walk, 1.1 miles
- Streatham Hill** - 26 mins walk, 1.2 miles

Front door to work

- Victoria** - 25 mins
- South Bank** - 31 mins
- London Bridge** - 32 mins
- The City** - 34 mins
- Canary Wharf** - 42 mins

020 8674 8884

buy@keatingestates.com

keatingestates.com