

Josephine Avenue, Brixton, SW2

£600,000

2 bedroom flat - penthouse for sale

## Property Details

This property offers a spectacular open-plan living space. A vast room with high ceilings and considerably large windows that add to the bright and airy atmosphere, glass double doors open out to a spacious private balcony and the feature window box adds a great sense of style and character to the room. The beautifully finished grey and black kitchen is complete with brand new high quality integrated appliances. There is all you may need in terms of worktop and storage space, creating the ideal space for anyone who enjoys cooking. The master bedroom is a generous size, benefitting from a second feature window box, plus a luxurious en-suite shower room. The second bedroom is also comfortable double. The family bathroom completes the property, finished to a high standard and in keeping with the luxurious feel throughout the house. Further benefits include a video entry system and a secure, off-street parking space. Chain-free.

## Features

- Two double bedrooms
- Two bathrooms
- Brand new and beautifully finished
- 870 square feet of internal living space
- Huge and characterful windows
- Private and gated development
- Secure allocated off street parking space
- Popular location on Josephine Avenue
- Chain-free

Council tax band      EPC rating B (83)





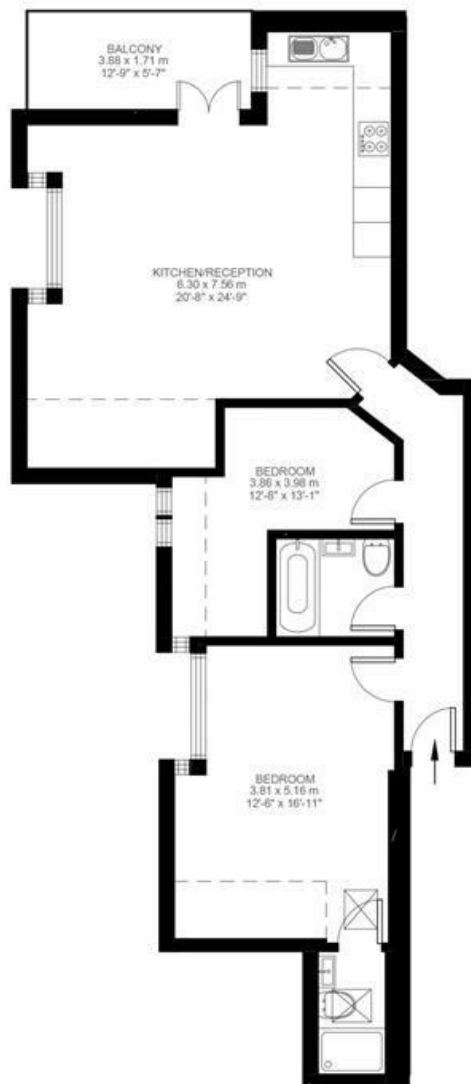
## Josephine Avenue

### 2 Bedroom Flat

Approx internal area:

**870 sqft 81 sqm**

While we do try our very best, floor plans are produced as a guide only and we take no responsibility for the precise accuracy with which any property is represented



Third Floor



Josephine Avenue, Brixton, SW2

