

Josephine Avenue, Brixton, SW2

2 bedroom flat - penthouse for sale

£650,000

Freehold

Property Details

The stunning open-plan reception and kitchen is truly impactful. This spectacular room has some serious Wow Factor and an abundance of space for dining, relaxing and entertaining guests. Natural light floods the entire room, thanks to the floor to ceiling windows and balcony the two wrap-around balconies, running the entire width and length of the flat, helping to create a wonderfully airy atmosphere. The beautifully finished grey and black kitchen is complete with brand new high quality integrated appliances. There is all you may need in terms of worktop and storage space, creating the ideal space for anyone who enjoys cooking. The master bedroom is a generous size, benefitting from direct access onto the balcony, plus a luxurious en-suite shower room. The second bedroom is also comfortable double. The family bathroom completes the property, finished to a high standard and in keeping with the luxurious feel throughout the house. Further benefits include a video entry system and a secure, off-street parking space.

Features

- Two double bedrooms
- Two bathrooms
- Brand new and beautifully finished
- Wrap around balcony
- Huge and characterful windows
- 820 square feet of internal living space
- Private and secure building
- Secure, allocated parking space
- Popular location on Josephine Avenue
- Chain-free

Council tax band

EPC rating B (83)



K

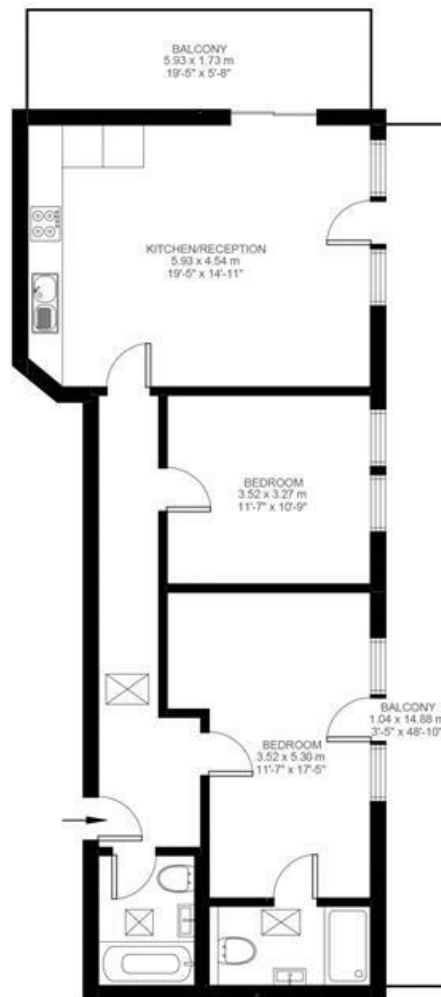
Josephine Avenue

2 Bedroom Flat

Approx internal area:

820 sqft 76 sqm

While we do try our very best, floor plans are produced as a guide only and we take no responsibility for the precise accuracy with which any property is represented



Third Floor



Josephine Avenue, Brixton, SW2

