

## Abberley Mews, Clapham, SW4

4 bedroom house - mews for sale

£899,950

Freehold

### Property Details

A new build, four double bedroom, three bathroom, freehold mews house in a gated development with an off-street parking space and over 1250 square feet of internal living space. The property comprises an open living space, a private garden, four bedrooms and three bathrooms. All four double bedrooms are a good size and there are two contemporary en-suite bathrooms. The property has a ten-year building guarantee. At the end of the road, you have Clapham Common and a short walk to the Northern Line. Within a ten minute walk you have Clapham Junction, Queenstown Road and Wandsworth Road stations.

### Features

- Private garden
- Off-street parking
- Chain free
- Secure gated development
- 10 year build-zone warranty
- Close to clapham common

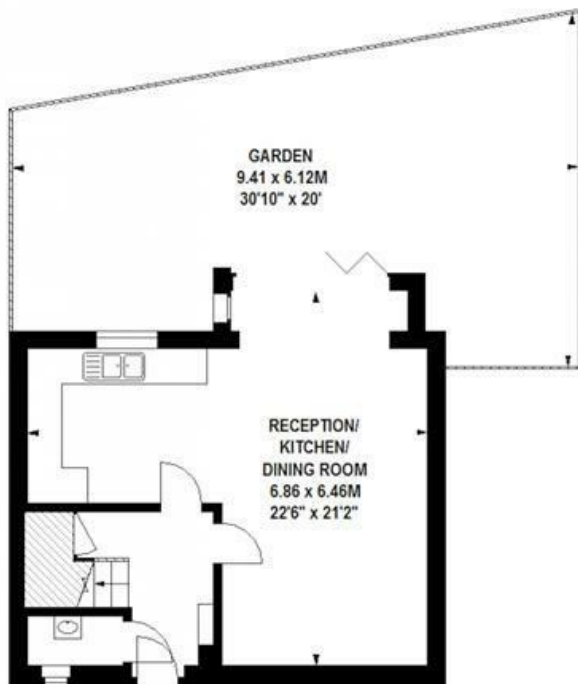
Council tax band      EPC rating (null)



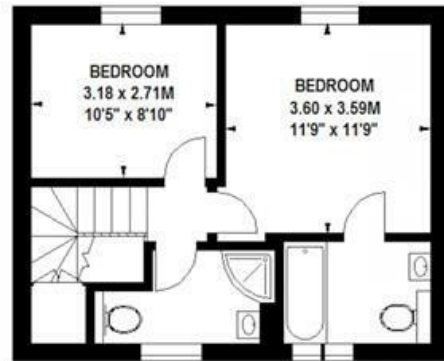


## Abberley Mews, SW4

Approximate gross internal area  
117 sq m / 1265 sq ft



**Ground Floor**



**Second Floor**



**First Floor**

Floor Plan produced for Keating Estates by Mays Floorplans © . Tel 020 3397 4594  
Illustration for identification purposes only, not to scale  
All measurements are maximum, and include wardrobes and window bays where applicable



Abberley Mews, Clapham, SW4

