



Trelawn Road, Brixton, SW2

3 bedroom house for sale

£875,000

Freehold

Property Details

A stunning three bedroom end of terrace Victorian house with a South-facing garden. Packed full of period charm this fantastic home has been lovingly refurbished. The dual-aspect reception is warm, bright and appealing with generous space to unwind on the sofa or curl up with a book in front of the feature fireplace. A contemporary kitchen diner with a homely feel sits to the rear, with shaker style cabinetry wrapping around to a breakfast bar, creating an ergonomic yet sociable room. The low-maintenance garden is South-facing, perfect for whiling away the summer hosting BBQs, with the added perk of the vast greenery of Brockwell Park nearby. Upstairs are three bedrooms. The principal is particularly appealing with a bay window and significant fitted wardrobe space. A further generous bedroom sits adjacent with garden views, and the third to the rear, a versatile space currently a charming nursery. A beautiful bathroom boasts a luxurious walk-in rain shower with underfloor heating and WC adjacent. A loft provides ample storage with the potential to grow into the home by extending into the loft, subject to permissions, with precedent already set on the road.

Features

- Three bedrooms
- South-facing private garden
- End-of-terrace Victorian house
- Characterful features
- Beautifully presented
- Potential to extend STNP
- Central Brixton and Herne Hill both a ten-minute stroll
- Brockwell Park nearby
- Supermarket, restaurants and cafes on the doorstep
- Freehold. Chain-free

Council tax band EPC rating D (67)



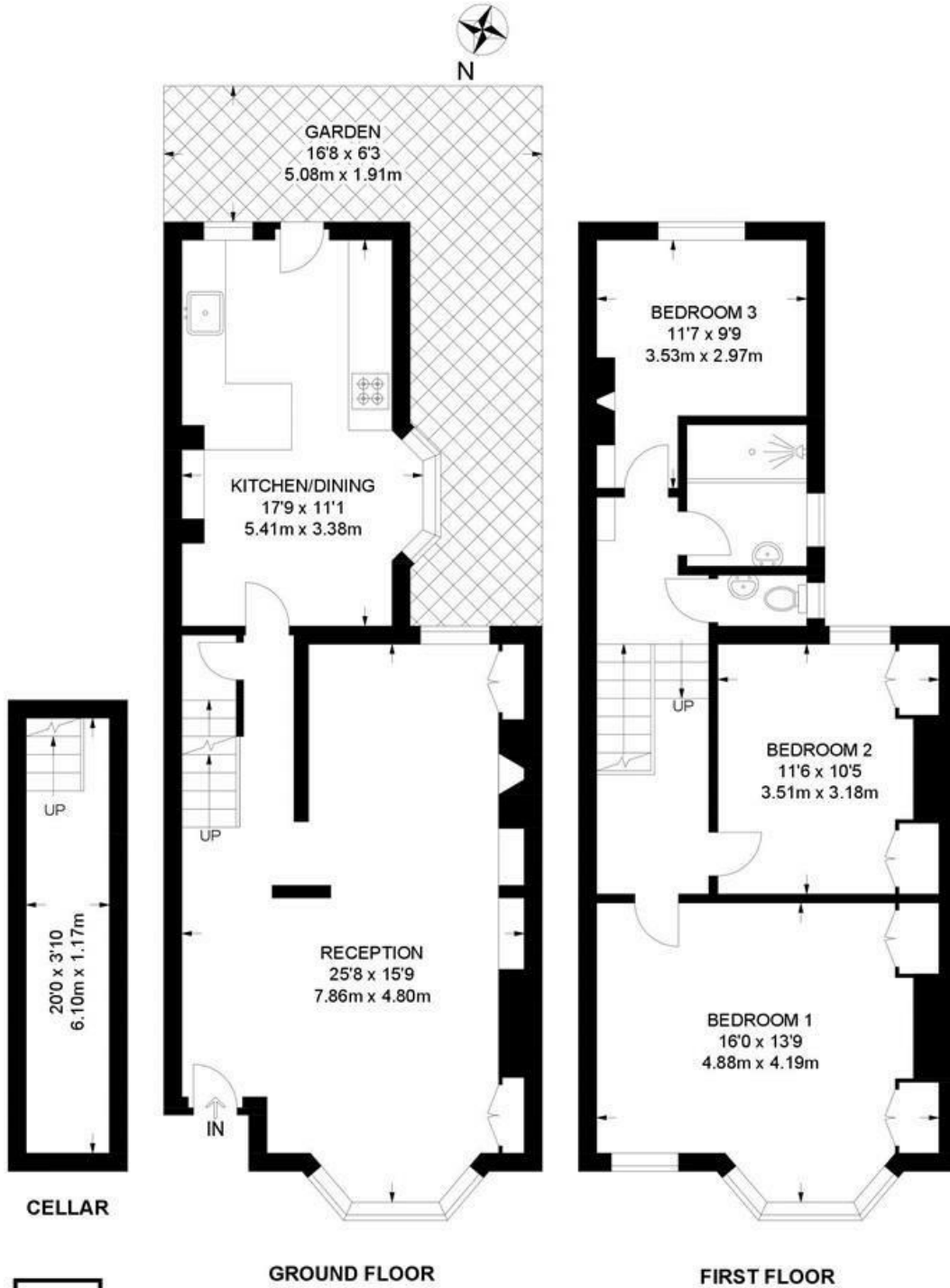


Trelawn Road, Brixton, SW2

Trelawn Road, SW2
3 Bedroom House

APPROXIMATE GROSS INTERNAL AREA WITH CELLAR: 1197 SQ FT / 111 SQ M

APPROXIMATE GROSS INTERNAL AREA WITH OUT CELLAR: 1120 SQ FT / 104 SQ M



While we try our very best, floor plans are produced as a guide only and we take no responsibility for the precise accuracy with which any property is represented.

Trelawn Road, Brixton, SW2

