



Ashurst Gardens, Tulse Hill, Brixton, SW2

1 bedroom flat - conversion for sale

£490,000

Share of Freehold

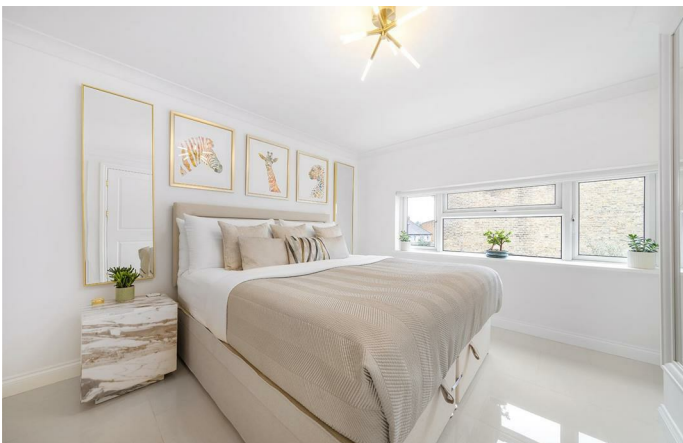
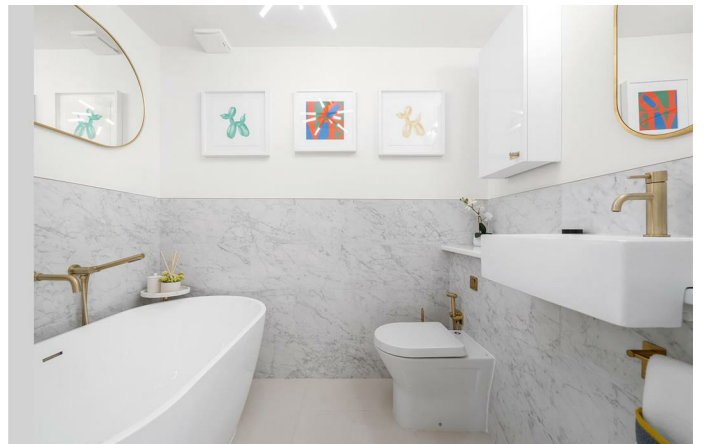
Property Details

Keating Estates are proud to present to market this fantastic one double-bedroom, split-level garden flat with two bathrooms, nestled within a converted townhouse set back from convenient Tulse Hill, popular for its proximity to Brockwell Park with easy access into Brixton, Herne Hill and Tulse Hill town centres. Boasting over 530 square feet, this beautiful apartment has been completely renovated, boasting tasteful décor and a high standard of fittings and fixtures, inclusive of new porcelain tiles and zoned underfloor heating throughout. The property also benefits from an off-street parking space.

Features

- One double bedroom
- Two bathrooms
- Converted townhouse
- Off-street parking space
- Split-level apartment
- High standard of fixtures and fittings throughout
- Private two-tiered garden
- Moments from Brockwell Park
- Walking distance to Brixton, Herne Hill and Tulse Hill town centres
- Chain-free and share of freehold

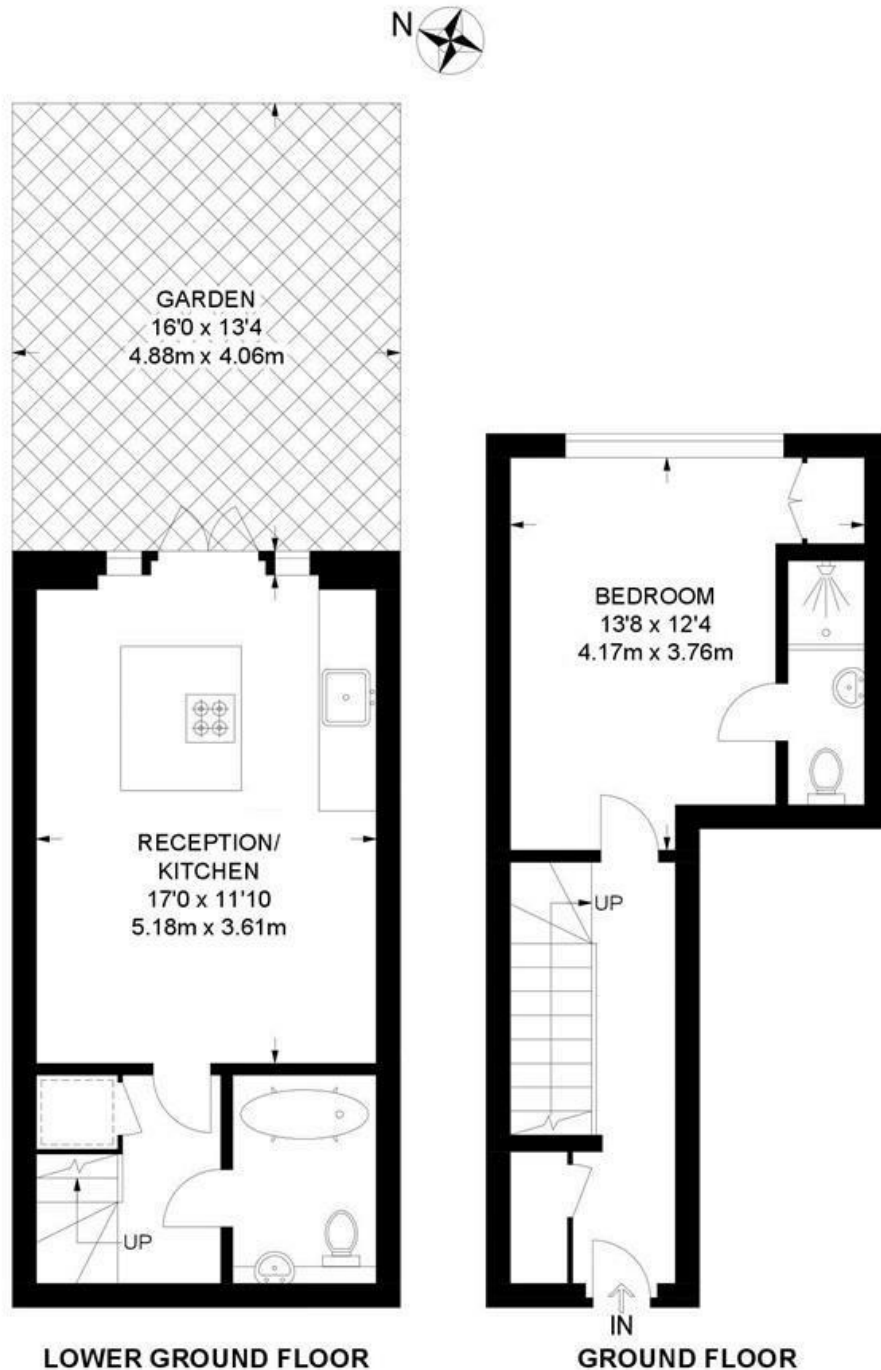
Council tax band C EPC rating C (77)



Ashurst Gardens, Tulse Hill, Brixton, SW2

Tulse Hill, SW2
1 Bedroom Flat

APPROXIMATE GROSS INTERNAL AREA: **538 SQ FT / 50 SQ M**



While we try our very best, floor plans are produced as a guide only and we take no responsibility for the precise accuracy with which any property is represented.

Ashurst Gardens, Tulse Hill, Brixton, SW2

