



## Streatham Common North, Streatham, SW16

2 bedroom flat - purpose built for sale

**£375,000**

Leasehold

### Property Details

A bright two double-bedroom flat quietly positioned within a well-maintained, purpose-built mansion block set back from Streatham Common North overlooking Streatham Common. This secure, first-floor flat boasts light and airy accommodation with neutral décor and over 750 square feet of internal living space. A complete blank canvas, the apartment is ready to move into straight away yet with the potential to add your own decorative touches over time. The property benefits from two separate balconies at either end of the property. The larger terrace feeds directly from the separate reception room which has a feature fireplace and lovely views overlooking the wide and green open spaces of Streatham Common. Off the hallway are the two double bedrooms, the master bedroom is a generous size whilst the second bedroom is also a comfortable double, making the property ideal for anyone looking to rent out a spare room or indeed share with friends. The separate kitchen is bright with ample storage and the bathroom is neutral with a shower above the bath. The heart of this apartment is the reception room, which offers plenty of space in which to relax and dine.

### Features

- Two double bedrooms
- Purpose built mansion block
- Two separate terraces at either end of the property
- View overlooking Streatham Common
- Over 750 square feet of internal living space
- Blank canvas
- Short stroll to the Leisure Centre and Streatham station.
- Chain-free

Council tax band

EPC rating D (67)



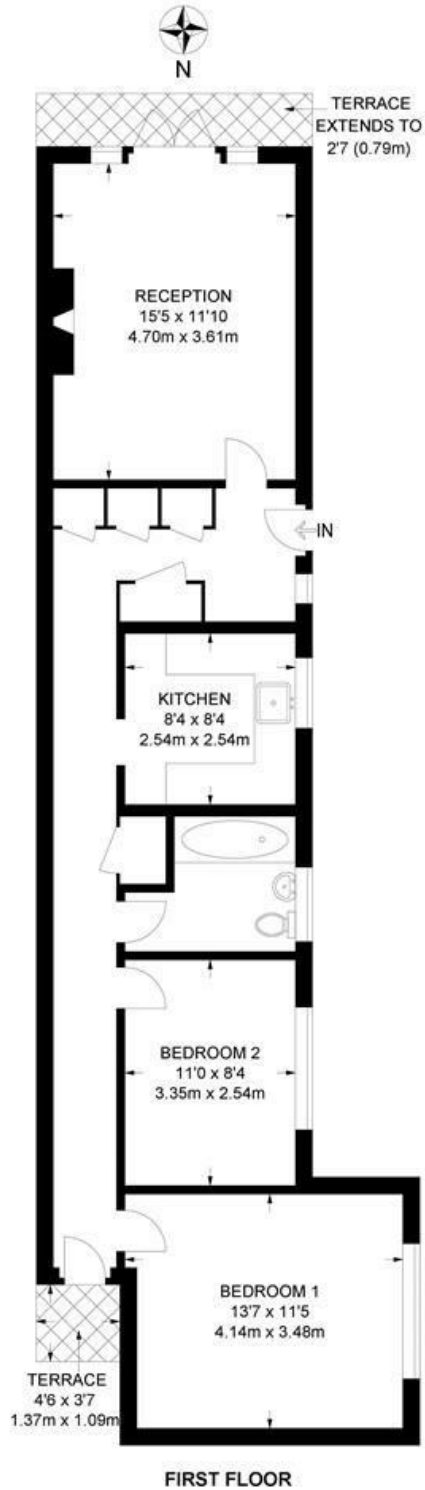


Streatham Common North, Streatham, SW16

**Streatham Common North, SW16**

**2 Bedroom Flat**

APPROXIMATE GROSS INTERNAL AREA: **758 SQ FT / 70.4 SQ M**



While we try our very best, floor plans are produced as a guide only and we take no responsibility for the precise accuracy with which any property is represented.

Streatham Common North, Streatham, SW16

