

Morval Road, Brixton, SW2

5 bedroom house for sale

£1,070,000

Freehold

Property Details

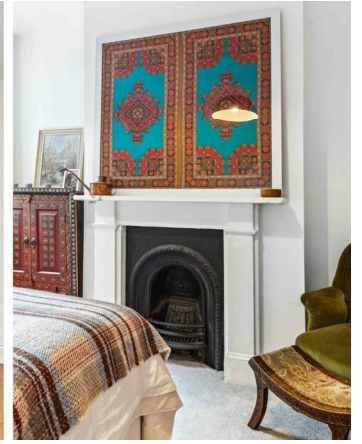
A five bedroom Victorian house packed full of character yet with contemporary twists making it truly unique. The double reception oozes charm, a grand retreat with dividing doors for when a cosier feel is desired, perfect for relaxing in front of the working fire. The stylish kitchen has a bay window offering the perfect dining nook. A low-maintenance walled retreat the wrap-around garden boasts attractive chevron decking with bordering planters. The loft conversion is executed with impeccable attention to detail with an opulent principal bedroom suite bathed in light with a sky lantern above the bed. This impressive suite has a shower set to one corner next to a free-standing bath tub below yet more skylights, a true home-spa experience. Also on this floor is the fifth bedroom, currently a home office this versatile spot has leafy views through a feature glass wall, with sky lantern above. On the first floor are three further bedrooms. One spanning the entire width of the property and boasting multiple windows and feature fireplace. The further two bedrooms are nestled at the rear with garden views. Separating these bedrooms, a luxurious bathroom has a bathtub with overhead rain shower.

Council tax band E EPC rating E (54)

Features

- Five bedrooms
- Two bathrooms
- Low-maintenance garden
- Victorian house
- Impressively unique loft conversion
- Character including working fire
- Brockwell Park the next street over
- Central Brixton and Herne Hill both a ten-minute stroll
- Supermarket, restaurants and cafes on the doorstep
- Chain-free and freehold

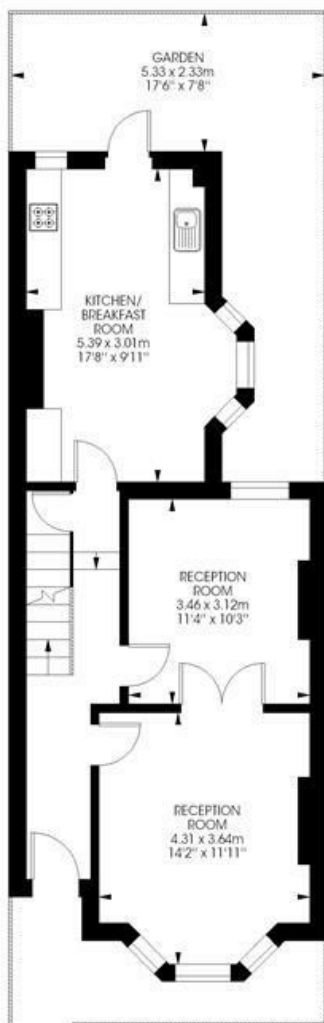




Morval Road, Brixton, SW2

Morval Road,
Brixton, SW2
5 bedroom house

Approximate internal area: 1755 sqft / 163 sqm



Ground Floor



First Floor



Second Floor

Basement



While we try our very best, floor plans are produced as a guide only and we take no responsibility for the precise accuracy with which any property is represented.

Morval Road, Brixton, SW2

