



Appach Road, Brixton, SW2

4 bedroom house for sale

£1,350,000

Freehold

Property Details

A truly unique, immaculately presented four bedroom Victorian house, a fine example of an immaculate home which has been designed, extended and professionally interior decorated with impeccable taste. The double reception strikes the balance of period features with modern high quality finishes, grand yet cosy retreat with Crittall-style windows framing the internal walls, aiding the flow of natural light. The stylish dine-in kitchen is set to the rear, an expansive and airy room designed with immaculate attention to detail, the ideal family hub with multiple skylights running the perimeter of the room, wooden chevron flooring and a bi-folding glass wall. A walled retreat the large private garden boasts a grassy lawn, with a paved seating area to the rear. Upstairs are four well-proportioned double bedrooms, one spanning the width of the property. Two luxurious bathrooms service the bedrooms with stylish décor and mood lighting. A dedicated utility room keeps the laundry separately and neatly tucked away, hygienically and conveniently set on the top floor. Having well over 2,000 square feet and unique design features this fantastic home is sure to appeal.

Features

- Four double bedrooms
- Two bathrooms plus a WC
- Private walled garden
- Semi-detached Victorian house
- Professionally designed interiors
- Over 2,000 square feet
- Neighbourly cul-de-sac setting with a supermarket, restaurants and cafes on the doorstep
- Central Brixton a ten-minute stroll
- Brockwell Park a five-minute walk
- Chain-free and freehold

Council tax band E EPC rating D (67)



Appach Road, Brixton, SW2

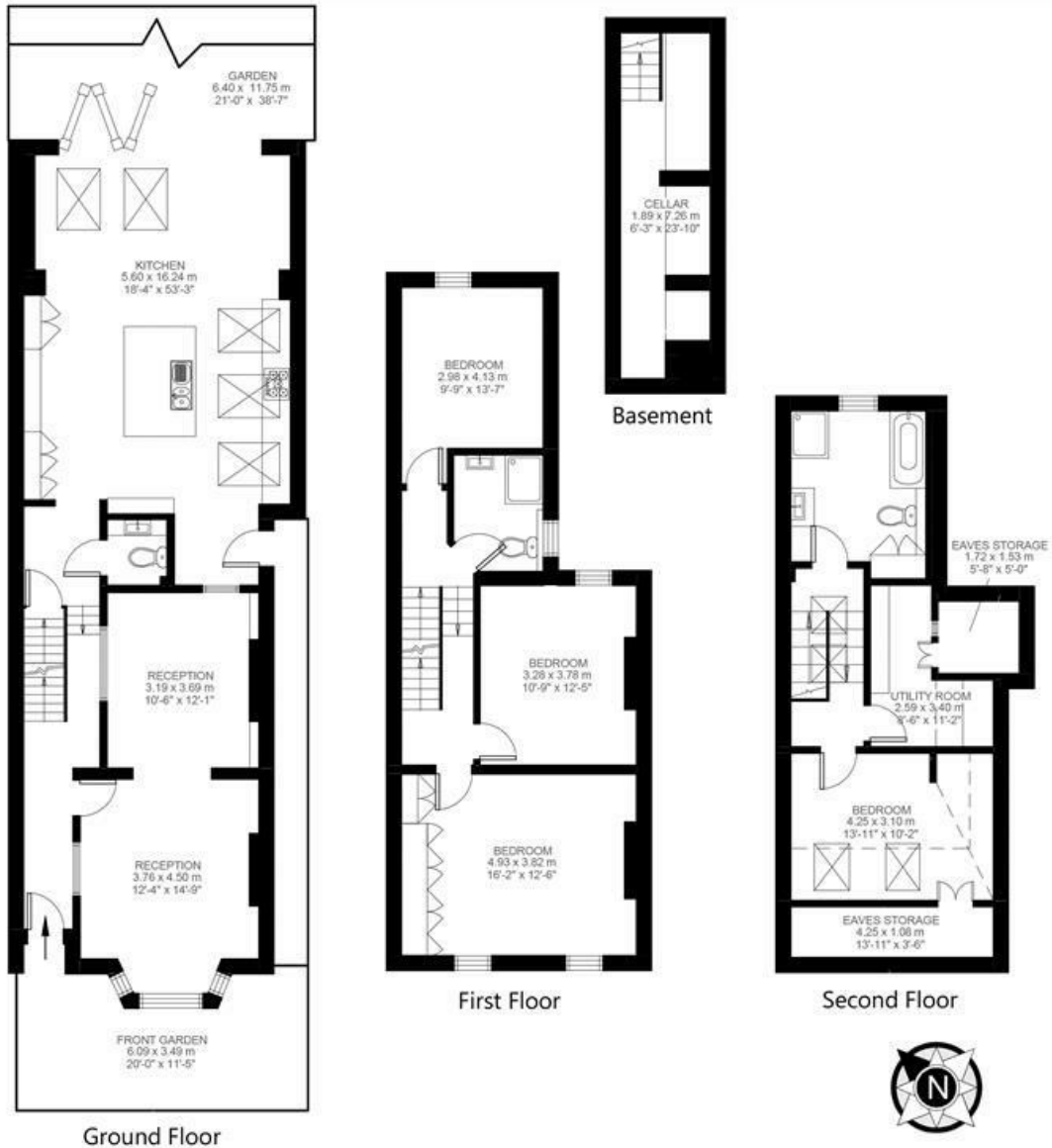
Appach Road, Brixton, SW2

4 Bedroom House

Approximate internal area: **2120 sqft 197 sqm**

Approximate eaves storage: **78 sqft 7 sqm**

Approximate total internal area: **204 sqm 2198 sqft**



While we do try our very best, floor plans are produced as a guide only and we take no responsibility for the precise accuracy with which any property is represented.

Appach Road, Brixton, SW2

