



Palace Road, Brixton, SW2

2 bedroom flat - conversion for sale

£525,000

Share of Freehold

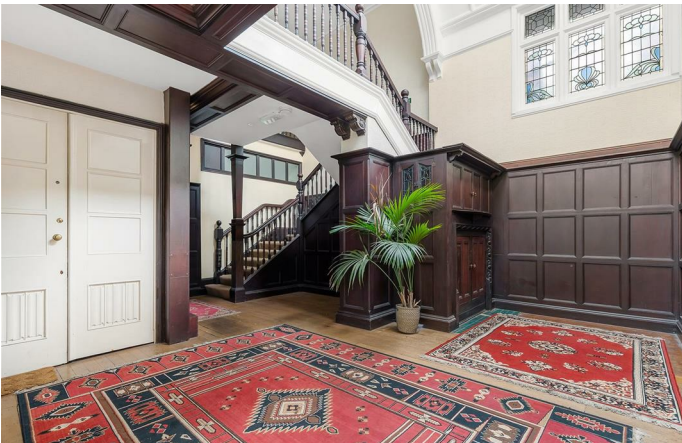
Property Details

An incredibly charming two bedroom apartment with a large shared garden in a historically listed period building set back from the tree-lined Palace Road. Packed full of character, this attractive home feels instantly liveable, bright and private. A large communal entrance hall is grand and characterful. The apartment itself is just as impressive, an expansive reception has an original fireplace, stained glass door and a pretty bay providing an ideal dining area. The separate integrated kitchen has been renovated with shaker cabinetry down both sides, topped with wooden worktops for a country feel enhanced by a large window with leafy views. Both bedrooms are peacefully set to the rear with high corniced ceilings, particularly spacious the principal has a window box terrace, ideal for plants. The large renovated bathroom has a separate shower and bathtub set below further stained glass, with underfloor heating. The cherry on the cake is the large and well-maintained front garden with ample space for children to play or to catch up with a friendly neighbour with whom this spot is shared. Ready to move into, the majority of this stunning home has been recently re-painted.

Council tax band C EPC rating C (71)

Features

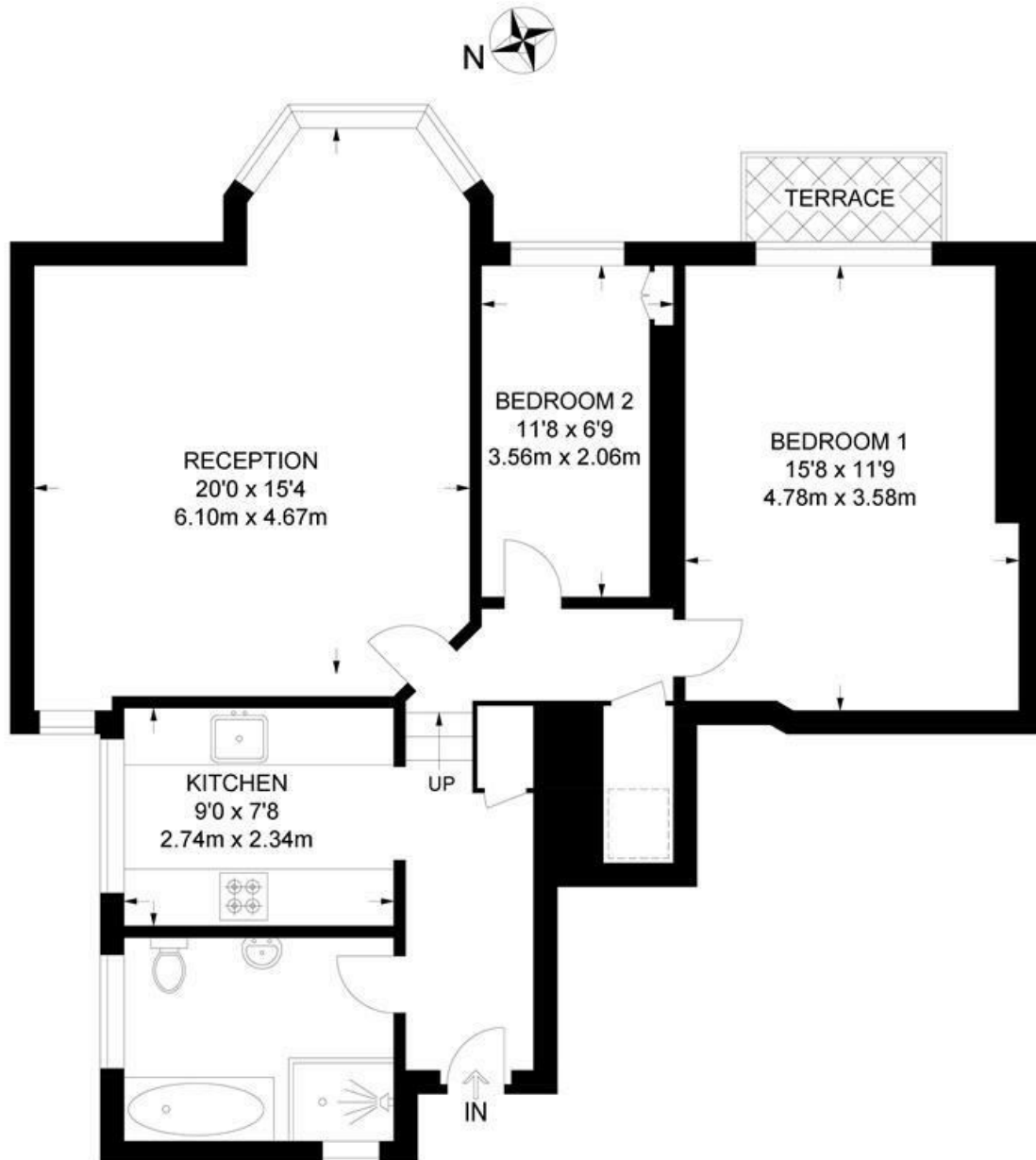
- Two bedrooms
- Large shared garden
- Historically listed period property
- Over 800 square feet
- Packed full of character
- Bright and airy
- Under a ten-minute walk to trains
- Strolling distance to Tulse Hill, West Norwood and Streatham High Street
- Local park and playground moments away
- Share of freehold



Palace Road, Brixton, SW2

Palace Road, SW2
2 Bedroom Flat

APPROXIMATE GROSS INTERNAL AREA: **808 SQ FT / 75 SQ M**



FIRST FLOOR



While we try our very best, floor plans are produced as a guide only and we take no responsibility for the precise accuracy with which any property is represented.

Palace Road, Brixton, SW2

