



Loughborough Park, Brixton, SW9

2 bedroom flat - conversion for sale

£625,000

Leasehold

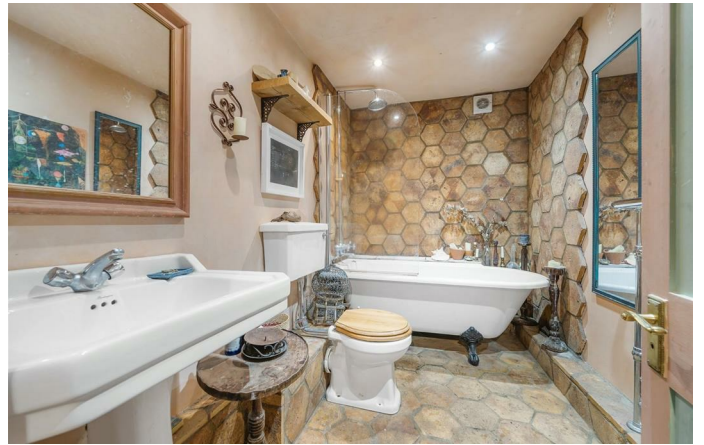
Property Details

An exceptional two bedroom flat with a South-facing garden and charming self-contained garden studio. Interior designed by a London based Artist and set within an imposing, detached period townhouse, opposite a park. Packed full of character from the moment you step through the private entrance, this stunning home and studio total almost 1,000 square feet of internal space. An expansive entrance hall is a welcoming delight. The heart of the home is the inviting reception featuring original floorboards, contemporary lighting and space to lounge and dine. The shaker-style kitchen wraps around to provide ample storage and worktops, with garden views. Set away from the sociable spaces, both bedrooms are comfortable doubles with plenty of storage. The characterful bathroom has imported French tiles, roll-top bath with overhead shower and Burlington sink. A leafy suntrap, the garden feels worlds away from the exciting bustle of the area, with sun late into the day. The pièce de resistance is the garden studio boasting a cabin in the woods vibe with dual aspect windows, kitchenette with butler sink and cosy log burner.

Features

- Two double bedrooms
- South-facing garden
- Self-contained garden studio
- Period detached townhouse conversion
- Private entrance
- Packed full of charm
- Park opposite
- Central Brixton a four-minute stroll
- Herne Hill a fifteen-minute walk
- Chain-free

Council tax band C EPC rating D (66)



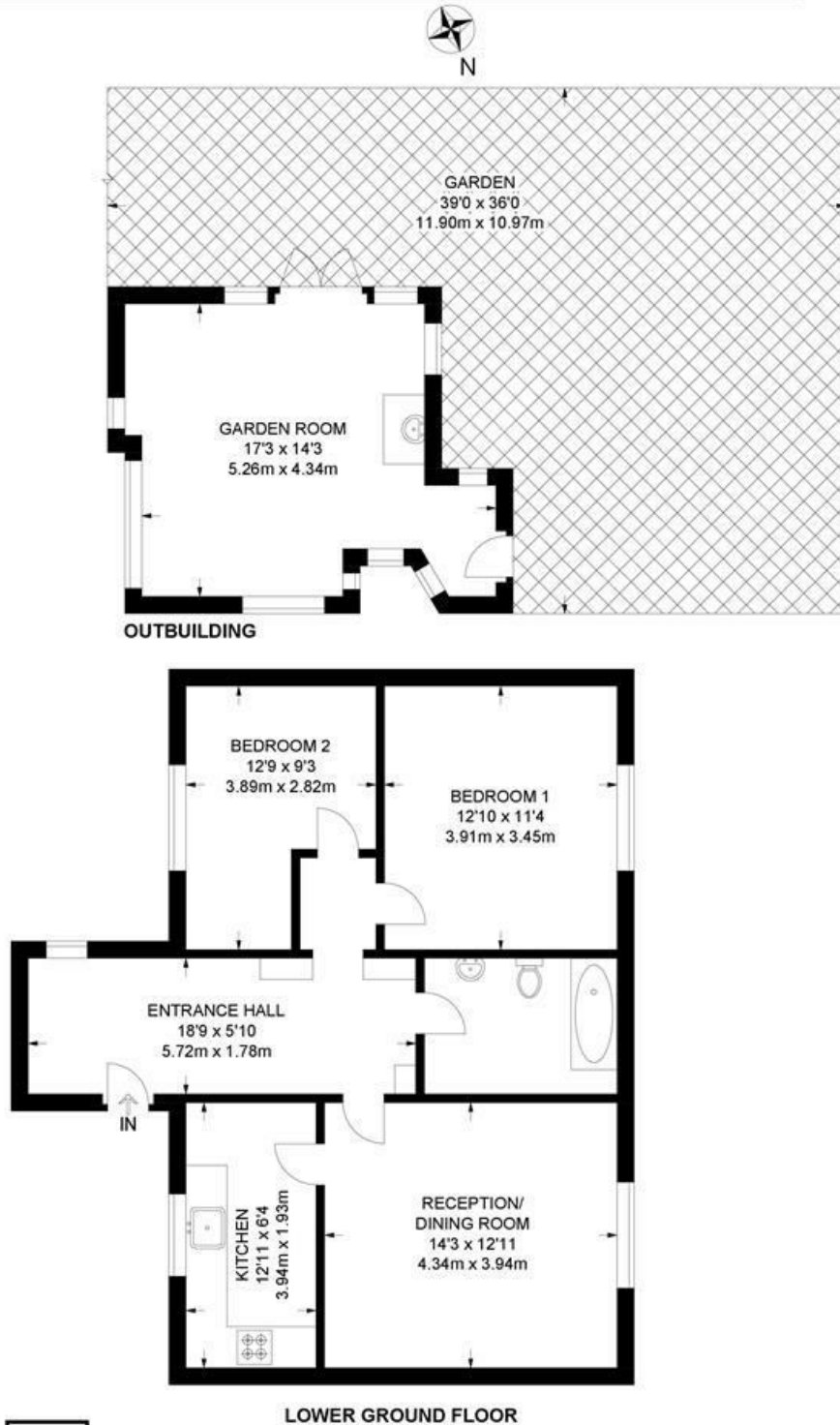


Loughborough Park, Brixton, SW9

Loughborough Park, SW9
2 Bedroom Flat

APPROXIMATE GROSS INTERNAL AREA WITH OUTBUILDING: **977 SQ FT / 90.8 SQ M**

APPROXIMATE GROSS INTERNAL AREA WITHOUT OUTBUILDING: **760 SQ FT / 70.6 SQ M**



While we try our very best, floor plans are produced as a guide only and we take no responsibility for the precise accuracy with which any property is represented.

Loughborough Park, Brixton, SW9

