



New Park Road, Brixton, SW2

2 bedroom flat to let

£391 Per Week

Furnished/unfurnished

Property Details

A lovely two double bedroom flat located in Brixton. The flat comprises a spacious reception room and a separate kitchen as well as two good size double bedrooms and a sleek modern family size bathroom. As far as locations go, it's fantastic. The development is located on New Park Road - a road popular for its proximity to Brixton and the array of pubs, bars and restaurants including Pop Brixton, Prince of Wales and Market House. The flat is also a short walk from Brockwell Park, which many local residents champion as London's best green space, not only that but you also have access to the extensive bus network on Brixton Hill which is just a minute's walk with multiple buses flowing down the hill and into central London and beyond.

Features

- Two double bedrooms
- Sleek and modern bathroom
- Reception and separate kitchen
- Bright and airy throughout
- Close to Brockwell Park
- Access to multiple transport links

Council tax band B EPC rating C (74)





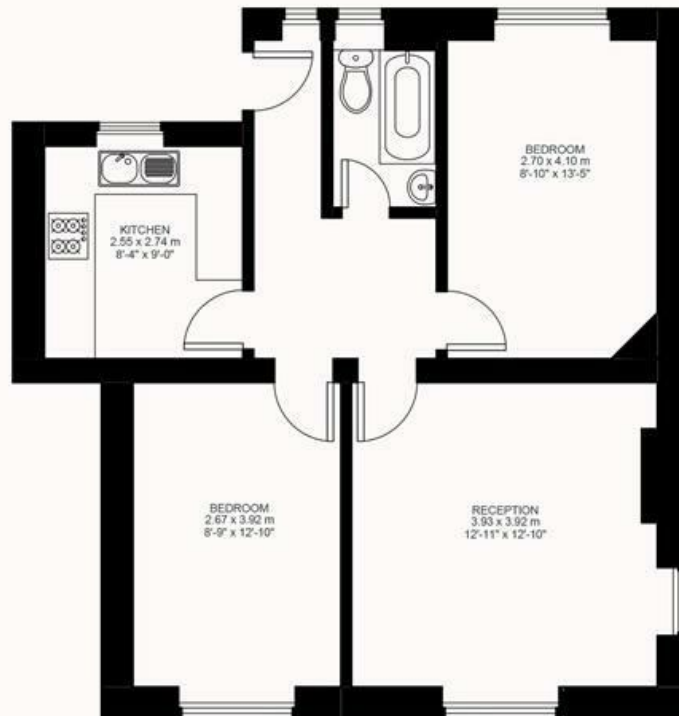
New Park Road

2 Bed flat

Approx internal area:

628 sqft 58 sqm

While we do try our very best, floor plans are produced as a guide only and we take no responsibility for the precise accuracy with which any property is represented



Third Floor



New Park Road, Brixton, SW2

