



Wingford Road, SW2

2 bedroom flat - conversion to let

£369 Per Week

Unfurnished

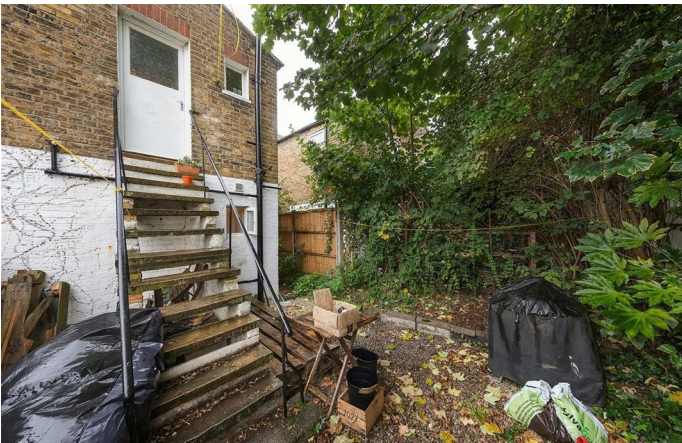
Property Details

This top floor Victorian conversion offers flexibility in layout as either a one or two bedroom flat depending on your needs. As a one bedroom flat you will enjoy an open plan kitchen with dining space as well as a separate reception room to the front. As a two bedroom flat there are two spacious doubles and the open plan kitchen/diner reverts to a kitchen/reception. There is direct access to the shared garden at the rear of the flat.

Features

- Shared Garden
- Quiet road
- Open plan kitchen
- One or Two bedroom arrangement

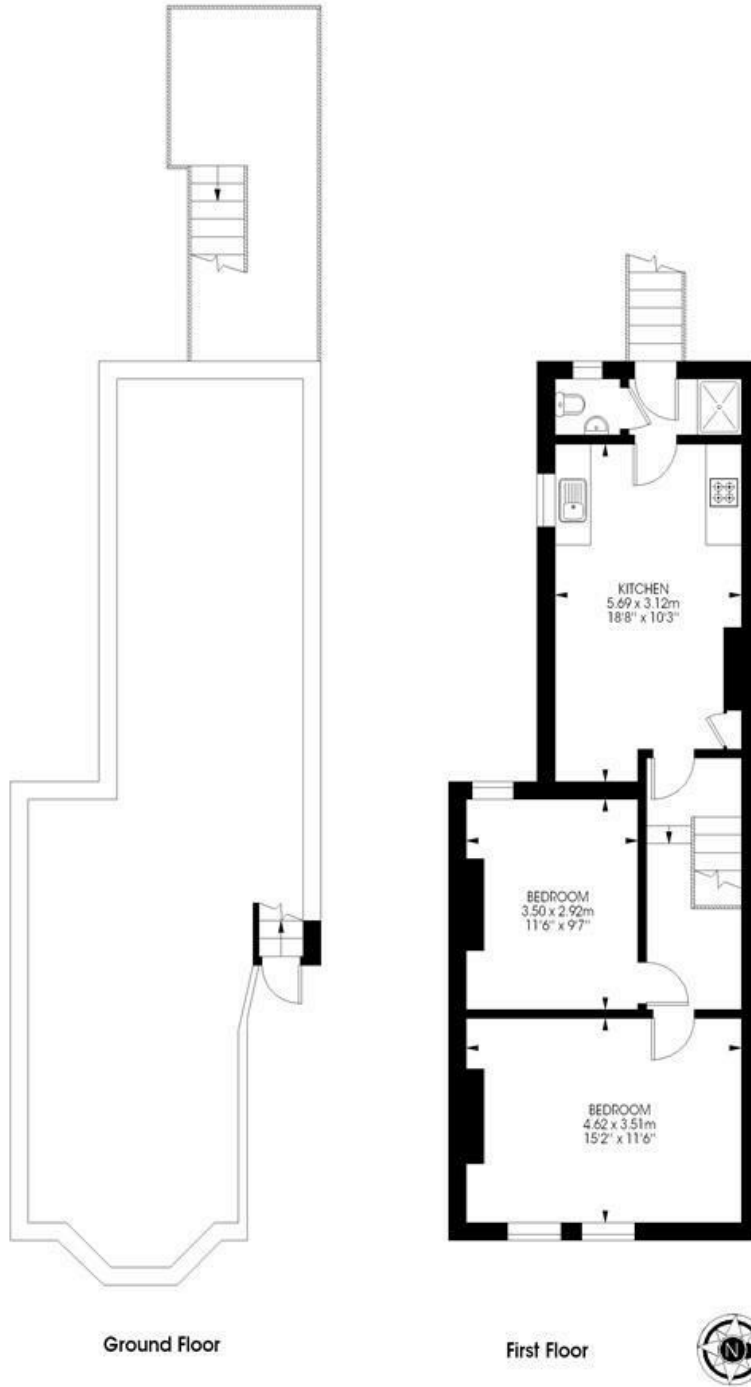
Council tax band C EPC rating D (58)



Wingford Road, SW2

Wingford Road,
Brixton, SW2
2 bedroom flat

Approximate internal area: 603 sqft / 56 sqm



While we try our very best, floor plans are produced as a guide only and we take no responsibility for the precise accuracy with which any property is represented.

Wingford Road, SW2

