

**Acre Lane, Brixton, SW2**

2 bedroom flat - purpose built for sale

**£650,000**

Leasehold

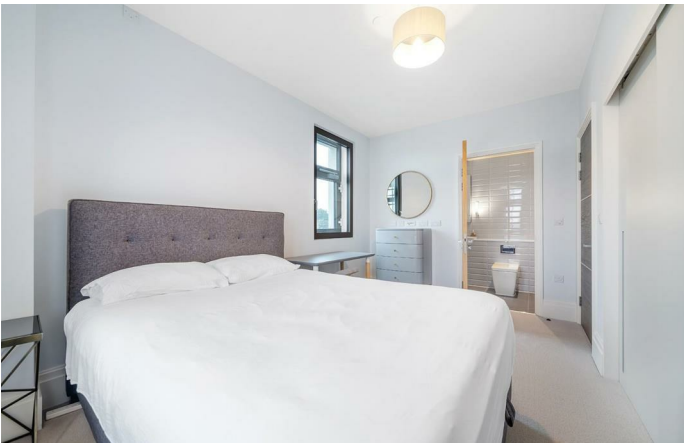
## Property Details

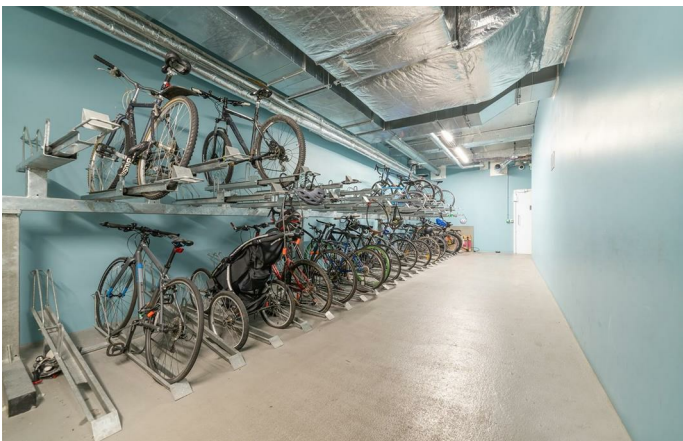
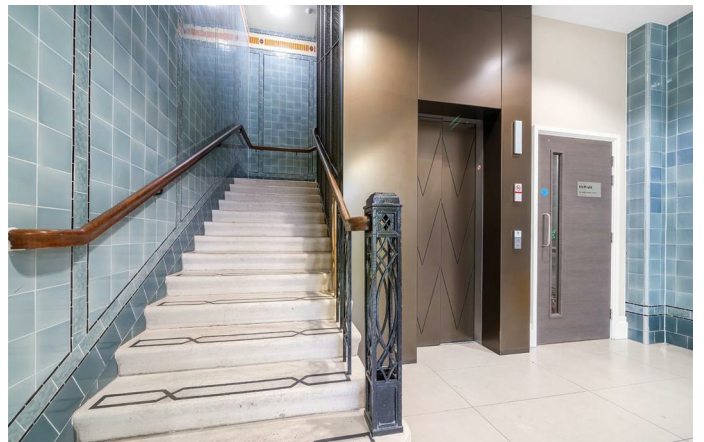
An impressive two double bedroom, two bathroom apartment tucked away within a stunning Art-Deco style modern building. This secure apartment boasts an open-plan reception creating a great entertaining space, with high ceilings and parquet flooring, plus the sleekest of kitchens with integrated appliances and plenty of storage, including a large cloakroom come pantry. The living area is vast with ample room to relax, host and dine. The cherry on the cake is the great clocktower and Shard views. Both bedrooms are comfortable doubles, the principal is particularly large yet soothing with built-in wardrobes, dual aspect windows and the luxury of an en-suite. The main bathroom is fresh and inviting with a soft grey tile, feature lighting and double ended bath with shower overhead. This particular home is quietly facing away from Acre Lane, in an elevated position with fantastic insulation and double glazed windows. This small, sought-after development has beautiful communal areas, a lift and bike store. There is also the added convenience of a membership gym on the ground floor.

## Features

- Two double bedrooms
- Two bathrooms
- Art-Deco style secure modern build with great views
- Over 825 square feet
- High-end finishes
- Build warranty
- Lift and bike storage
- Central location in Brixton
- Victoria and Northern Lines
- Chain-free

Council tax band D    EPC rating B (82)

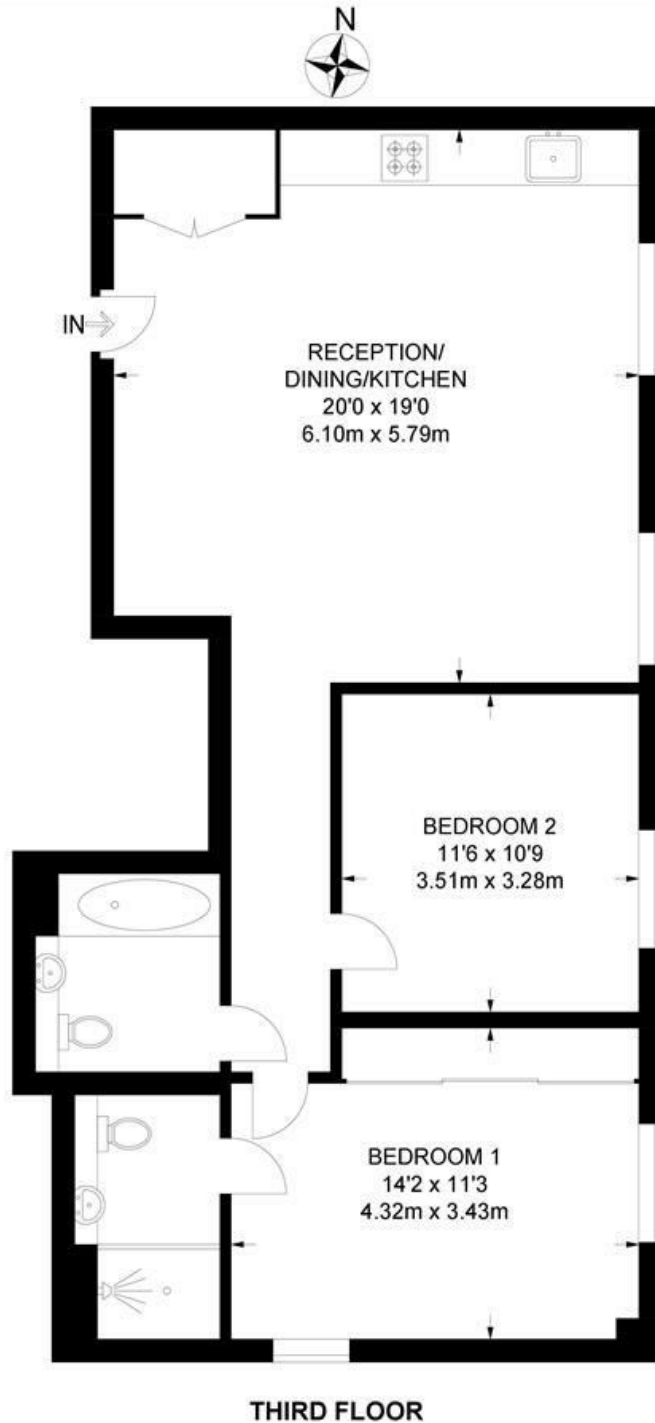




Acre Lane, Brixton, SW2

**Acre Lane, SW2**  
**2 Bedroom Flat**

APPROXIMATE GROSS INTERNAL AREA: **826 SQ FT / 76.7 SQ M**



While we try our very best, floor plans are produced as a guide only and we take no responsibility for the precise accuracy with which any property is represented.

Acre Lane, Brixton, SW2

