



Trinity Rise, Herne Hill, SW2

2 bedroom flat - conversion for sale

Share of Freehold

Property Details

An impressive two double-bedroom apartment with a shared garden. Boasting fantastic views and securely nestled on the top floor of a grand period property, set back from the street. Sure to impress, the bright, open-plan reception has South-facing windows spanning the width, providing glorious leafy views. Feeling worlds away from city life, this sociable hub benefits from an abundance of natural light and provides ample space in which to relax, dine and entertain. Neatly set to one side the gloss kitchen adds to the contemporary feel whilst providing integrated appliances and plenty of storage. The two bedrooms are both generous doubles, peacefully elevated above the street, in calming tones with cosy carpets. The principal is particularly well-proportioned with generous fitted wardrobes. The attractive bathroom cleverly houses a utility, keeping the noise of the washing machine away from the impressive social spaces. There is further storage at the bottom of the communal stairs and under the external stairs for bikes. The cherry on the cake is a sprawling South-facing garden. With all-day sun this marvellous space is ideal for whiling away the summer with friends or the occasional neighbour with whom the spot is shared.

Features

- Two double bedrooms
- Large, South-facing shared garden
- Fantastic views
- Victorian conversion
- Beautifully presented
- Secure, bright, quiet and private due to the elevated setting
- Brockwell Park a three-minute stroll
- Transport links and amenities of Herne Hill, Tulse Hill and Brixton
- Share of freehold

Council tax band D EPC rating C (78)

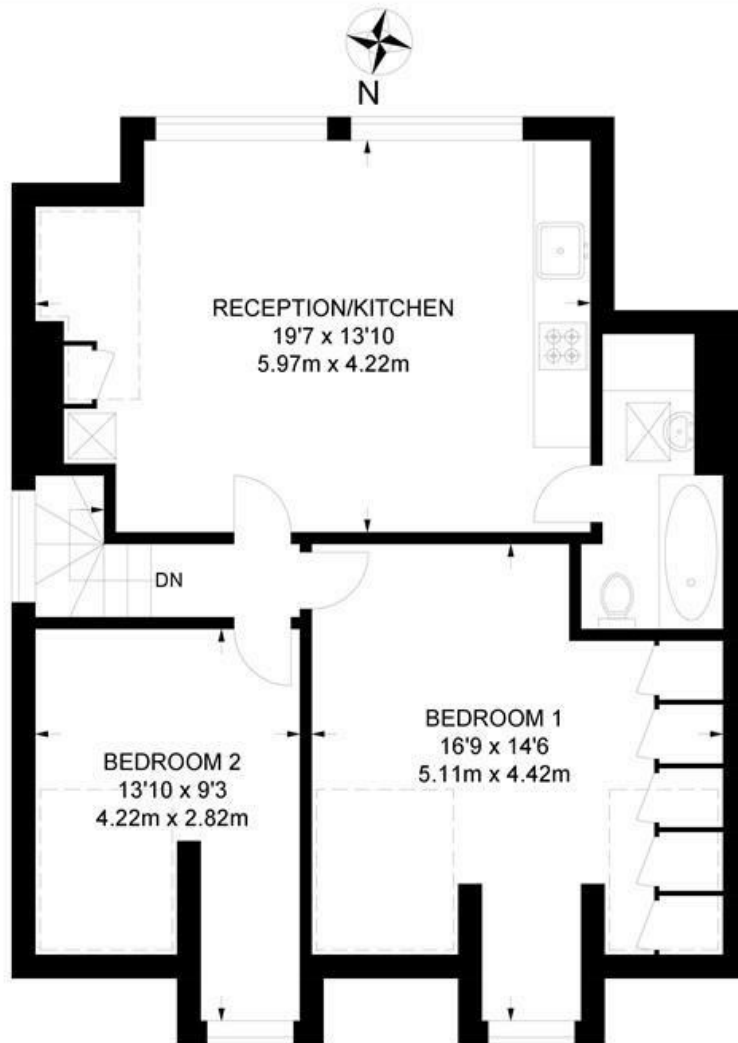




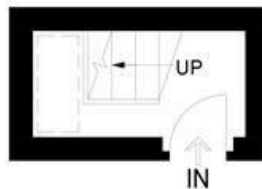
Trinity Rise, Herne Hill, SW2

Trinity Rise, SW2
2 Bedroom Flat

APPROXIMATE GROSS INTERNAL AREA: 702 SQ FT / 65.2 SQ M



THIRD FLOOR



SECOND FLOOR



While we try our very best, floor plans are produced as a guide only and we take no responsibility for the precise accuracy with which any property is represented.

Trinity Rise, Herne Hill, SW2

