



Hubert Grove, Brixton, SW9

2 bedroom flat - conversion for sale

£475,000

Leasehold

Property Details

An enticing two bedroom apartment with private terrace, in an attractive period property. Spanning the width of the home is an inviting open-plan reception offering ample space to cook, dine and unwind, with modern flooring and multiple windows flooding the room in light. Neatly tucked to the side the kitchen runs along one wall, maximising the space. Neutral décor and modern lighting make this hub of the home the ideal place to entertain. Both bedrooms are well-proportioned, separated from one another for privacy, making this appealing home perfect for sharers. The principal bedroom is particularly appealing with a door to a South-facing terrace, suited to lazy weekend mornings. This private terrace is a suntrap ready to enjoy the moment the weather permits, dining al-fresco or stargazing once the sun sets. Conveniently set between the bedrooms off a spacious landing area, the bathroom is neutrally decorated, equipped with a bathtub and shower above. The apartment is ready to move into straight away with the potential to add your own touches over time. A share of the freehold will be granted upon completion of the final flat in the building.

Features

- Two bedrooms
- South-facing private terrace
- Victorian end-of-terrace conversion
- Bright and airy
- Neutrally presented throughout
- Clapham High street and the Northern Line an eight-minute walk
- Brixton a fifteen-minute walk
- Wide array of amenities
- Chain-free
- A share of the freehold will be granted

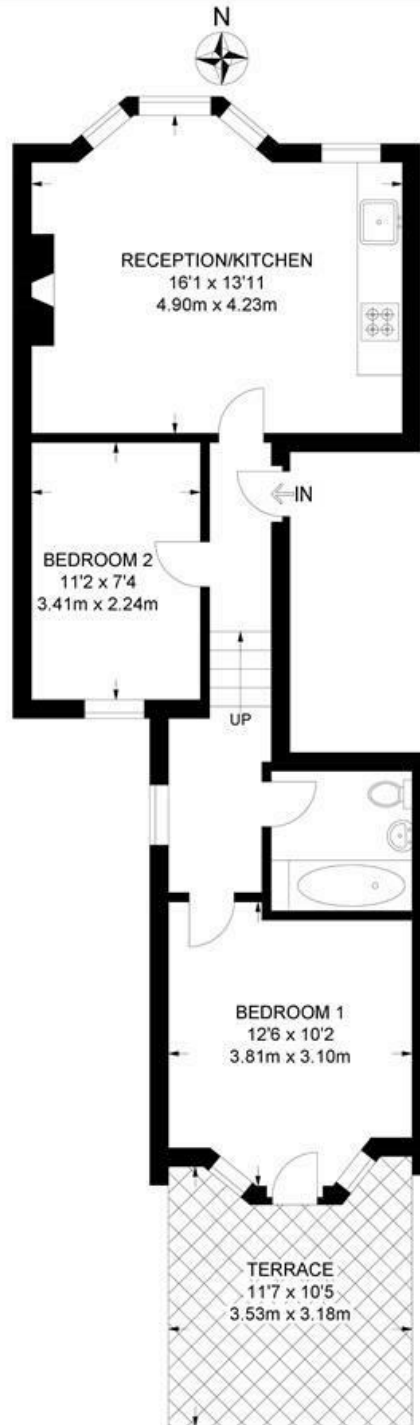
Council tax band C EPC rating D (65)



Hubert Grove, Brixton, SW9

Hubert Grove, SW9
2 Bedroom Flat

APPROXIMATE GROSS INTERNAL AREA: **539 SQ FT / 50 SQ M**



FIRST FLOOR



While we try our very best, floor plans are produced as a guide only and we take no responsibility for the precise accuracy with which any property is represented.

Hubert Grove, Brixton, SW9

