

## Villa Road, Brixton, SW9

1 bedroom flat - conversion for sale

Share of Freehold

### Property Details

A fantastic one bedroom apartment with a private terrace, within an impressive Victorian overlooking the park. This beautifully presented apartment has undergone a back to brick refurbishment during the time of ownership and has a bright and airy ambience. The open-plan reception boasts a trio of expansive arched windows, modern lighting and engineered wood flooring. The almost floor-to-ceiling windows relish unobstructed views of the park opposite. Neatly set to one end so as to not interrupt the flow of light, the kitchen is integrated within gloss cabinetry offering ample storage, whilst still allowing room for a dining table. Peacefully nestled to the rear, the double bedroom has fitted wardrobes and a serene ambience, enhanced by French doors to the private terrace, enjoy a coffee on the terrace or your favourite tippie under the stars. In the centre of the home the contemporary bathroom has a luxurious walk-in rain shower. Keeping the laundry quietly tucked away, a separate utility room, private for this apartment, is accessed across the communal hallway providing generous secure space to wash and air your laundry with additional storage.

### Features

- One double bedroom
- Private terrace
- Victorian conversion
- Overlooking the park
- Bright and airy
- Separate utility storage room
- Brixton station in seven minutes
- Close to the amenities of Brixton, Stockwell and Loughborough Junction
- Share of Freehold
- Chain-free

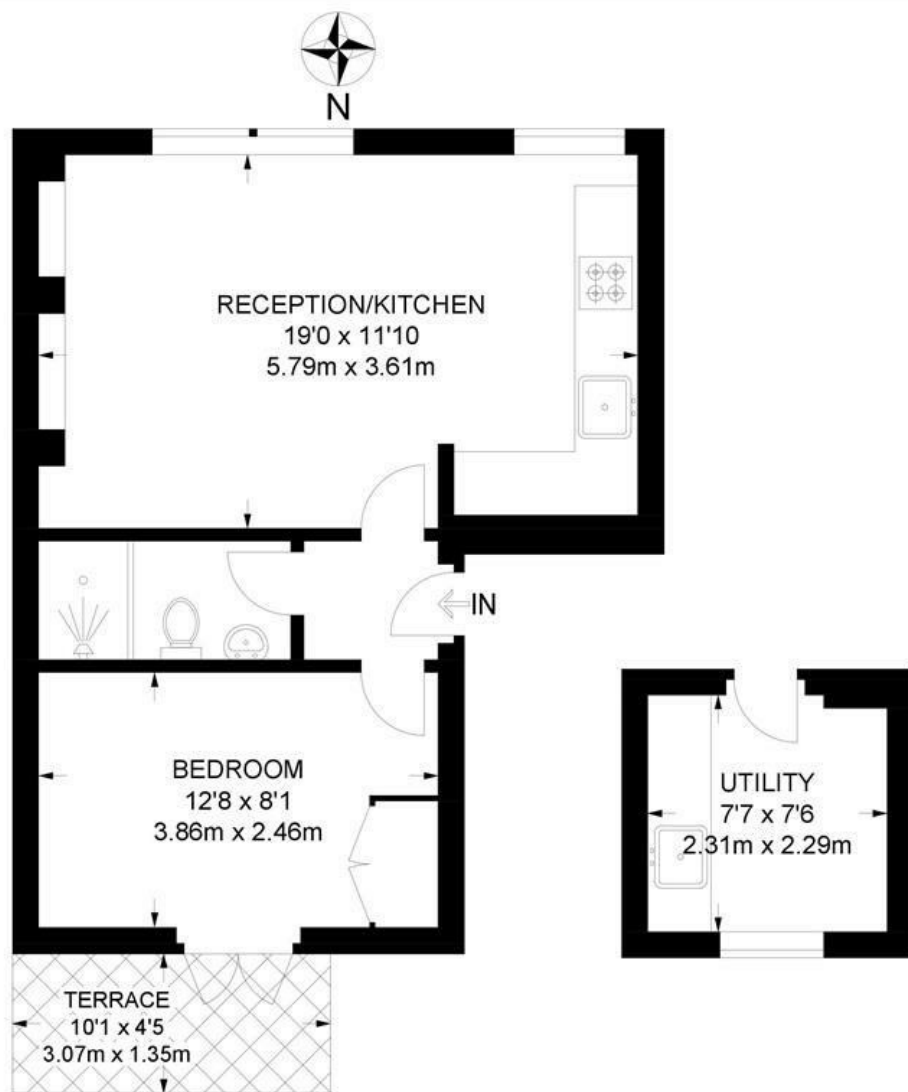
Council tax band C    EPC rating (0)



Villa Road, Brixton, SW9

**Villa Road, SW9**  
**1 Bedroom Flat**

APPROXIMATE GROSS INTERNAL AREA WITH UTILITY: **442 SQ FT / 41 SQ M**  
APPROXIMATE GROSS INTERNAL AREA WITHOUT UTILITY: **385 SQ FT / 35.8 SQ M**



**FIRST FLOOR**



While we try our very best, floor plans are produced as a guide only and we take no responsibility for the precise accuracy with which any property is represented.

Villa Road, Brixton, SW9

