

**Crawthew Grove, East Dulwich, SE22**

2 bedroom flat to let

**£485 Per Week**

Part furnished

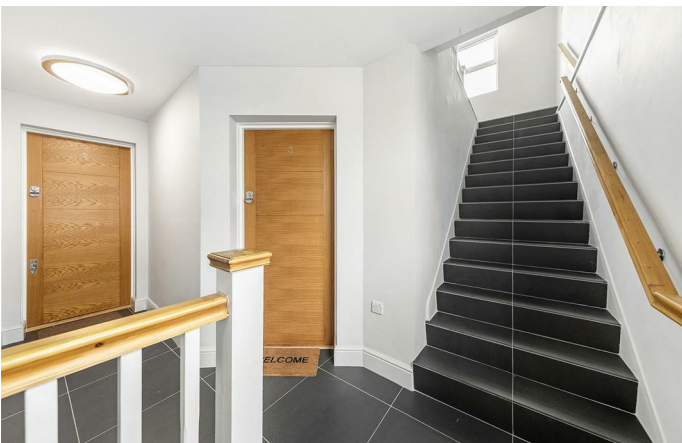
## Property Details

This little gem is tucked away on a quiet residential road just off Lordship Lane. The flat offers two double bedrooms, a large open plan kitchen/reception and a family bathroom. The flat is located in the middle of Lordship lane providing access to the countless restaurants, pubs, boutiques and other amenities associated with the popular road which by many is seen as the hub of East Dulwich. There is also plenty of green space nearby, with Dulwich Park and Peckham Rye Park being both within a short walking distance.

## Features

- Two double bedrooms
- Family bathroom
- Open plan reception and kitchen
- Around a 7 minute walk to East Dulwich station
- Close to transport
- Around a 10 minute walk to Peckham Rye Common

Council tax band C    EPC rating B (83)





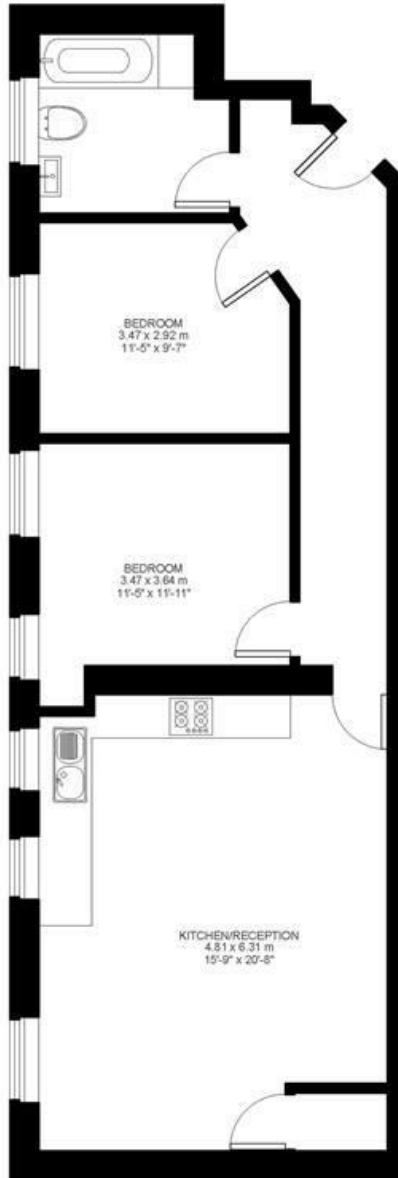
## Crawthrew Grove

2 Bed flat

Approx internal area:

**781 sqft 73 sqm**

While we do try our very best, floor plans are produced as a guide only and we take no responsibility for the precise accuracy with which any property is represented



First Floor



Crawthow Grove, East Dulwich, SE22

