



Victoria Rise, Clapham, SW4

1 bedroom flat - conversion for sale

£460,000

Share of Freehold

Property Details

A charming one bedroom Victorian apartment in Clapham Old Town with The Common at the end of the road. Enviably located in a sought-after residential pocket, the location cannot be over-stated. Packed full of character, the heart of the home is the lovely reception, bathed in natural light from large sash windows framed by charming original panelling. High ceilings enhance the airy feel with space for a dining table and a comfortable lounge in front of the feature fireplace. The separate kitchen provides all you will need in terms of practicality with neutral cabinetry and wooden worktops spanning the length down both sides. Nearest the window, a handy breakfast bar provides a second, more casual, dining space. Quietly nestled to the rear, the double bedroom features an almost floor-to-ceiling window with leafy views. A tranquil room with plenty of space for wardrobes and additional storage options. A neutral bathroom has a bathtub with overhead rain shower, ideal for a soak in the bubbles after a jog or game of tennis in Clapham Common.

Council tax band C EPC rating D (65)

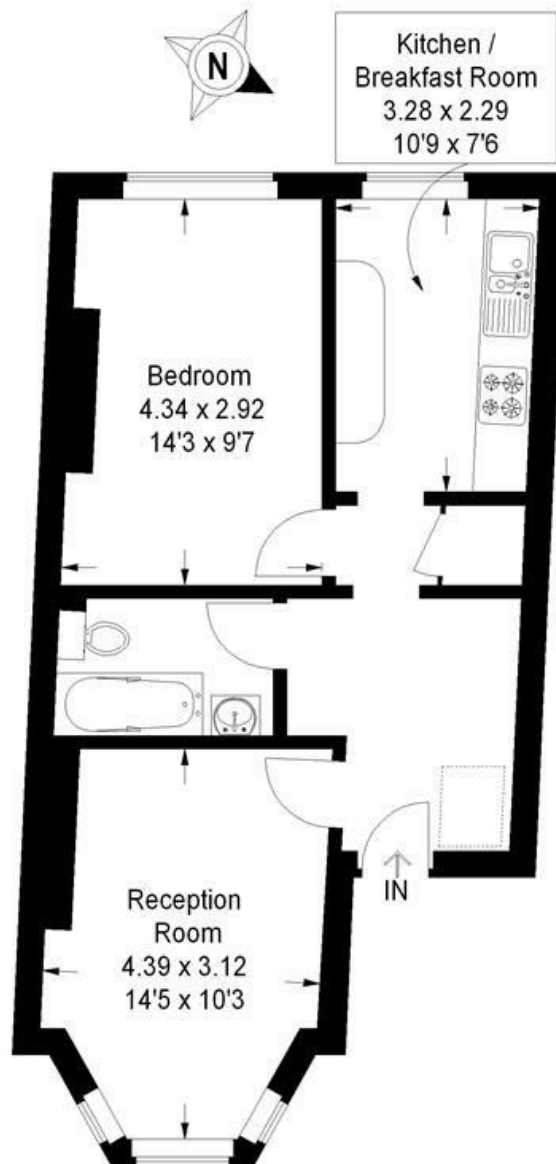
Features

- One double bedroom
- Victorian conversion
- Packed full of character
- Bright and airy throughout
- Desirable and enviable location
- Clapham Common at the end of the street
- Local amenities of Clapham Old Town
- Northern Line and Overground within walking distance
- Share of freehold
- Chain-free



Victoria Rise, SW4

Approximate Gross Internal Area
47.2 sq m / 508 sq ft



 = Reduced headroom below 1.5 m / 5'0

First Floor

This plan is for layout guidance only. Not drawn to scale unless stated. Windows and door openings are approximate. Whilst every care is taken in the preparation of this plan, please check all dimensions, shapes and compass bearings before making any decisions reliant upon them. (ID165728)

Victoria Rise, Clapham, SW4

