



Ballater Road, Brixton, SW2

2 bedroom flat - conversion for sale

£525,000

Leasehold

Property Details

A beautiful two bedroom Victorian apartment on a neighbourly street. In a location with so much on your doorstep this is the ideal first-time home with a versatile layout and bright ambience, enhanced by high ceilings and first floor position. Set in the centre of the home is a charming dine-in kitchen with cabinetry wrapping around two walls, framing the dining area to create a sociable yet homely place to cook, host and dine. A bright, separate reception is at the front of the property with a charming bay window, an inviting space to unwind. Both bedrooms are large enough to have a double bed plus storage and are set to opposing sides of the home making this lovely flat ideal for those looking for the potential to rent out a room. The principal bedroom is particularly appealing, tucked away at the rear of the apartment with cosy carpets and leafy views. The second bedroom features space for a desk and wardrobe in addition to a bed, a versatile space which is easy to repurpose should a second bedroom not be required. Completing this attractive home, the bathroom has a bathtub with overhead shower and storage options.

Features

- Two bedrooms
- End-of-terrace Victorian conversion
- Separate reception and kitchen
- Bright and airy
- Quiet residential street with amenities in every direction
- Eateries, shops and cafes of Acre Lane on the doorstep
- Brixton centre a seven-minute stroll
- Clapham North a ten-minute stroll
- Victoria and Northern lines
- Chain-free

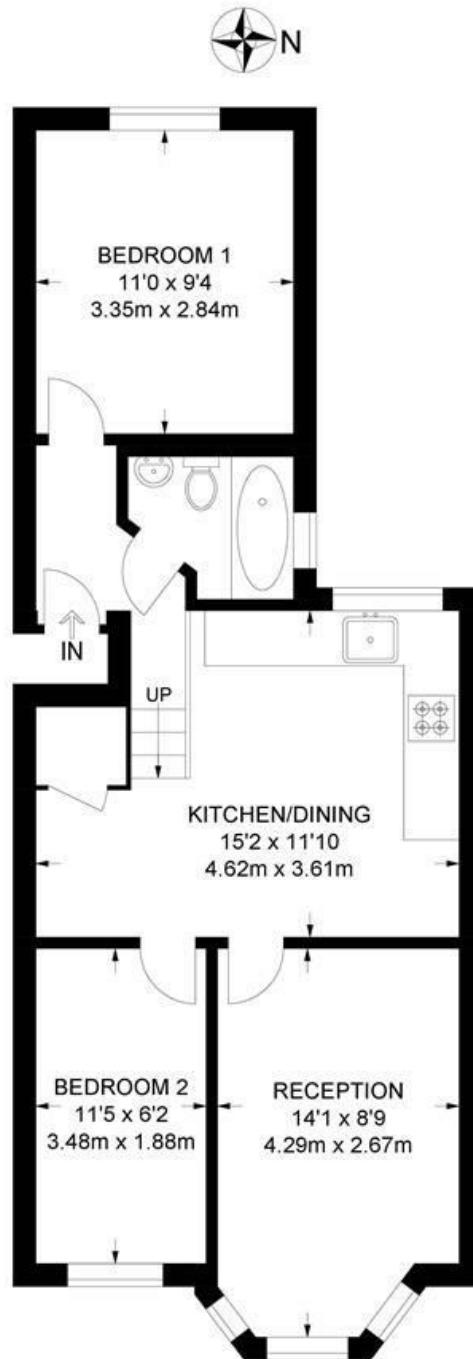
Council tax band C EPC rating D (57)



Ballater Road, Brixton, SW2

Ballater Road, SW2
2 Bedroom Flat

APPROXIMATE GROSS INTERNAL AREA: **530 SQ FT / 49.2 SQ M**



FIRST FLOOR



While we try our very best, floor plans are produced as a guide only and we take no responsibility for the precise accuracy with which any property is represented.

Ballater Road, Brixton, SW2

