

**Oak Square, Clapham, SW9**

2 bedroom flat - purpose built for sale

**£540,000**

Leasehold

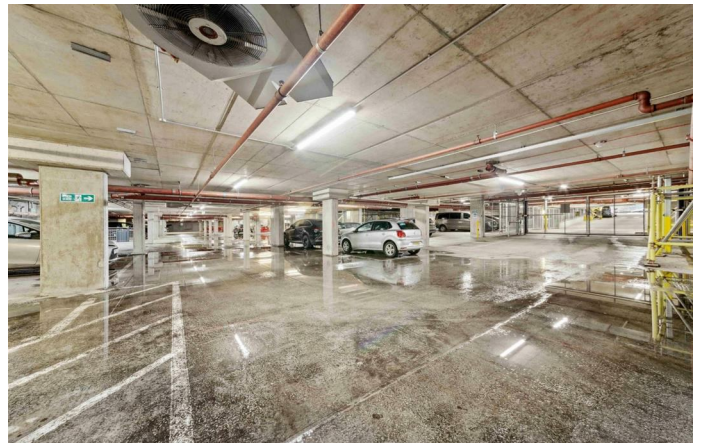
## Property Details

An appealing two double bedroom penthouse apartment with a private terrace and parking in a secure modern development in the Brixton, Stockwell, Clapham triangle. Set quietly on the top floor the home is bright and private. The open-plan reception has dual aspect windows and offers space to relax, cook and dine. The stylish kitchen boasts an abundance of worktop space and storage in a sociable L-shape creating room for a dining table. Steps from the comfortable lounge area lead to glass double doors to the private terrace. The low maintenance terrace has fantastic views across the Skyline, including Battersea Power Station and The Shard. Unwind in the summer sun or to sunsets and city lights. Both bedrooms are comfortable doubles, with fitted wardrobes. A neutral bathroom has a bathtub with rain shower. The entrance hall offers additional storage in three cupboards. Further benefits are an allocated underground parking space, lift and shared bike storage, plus good energy efficiency. Improvement works to the exterior of the building are underway and there is an EWS1 certificate. The property was purchased as Shared Ownership and will be staircased in with the sale so the new owner will be purchasing with full ownership.

## Features

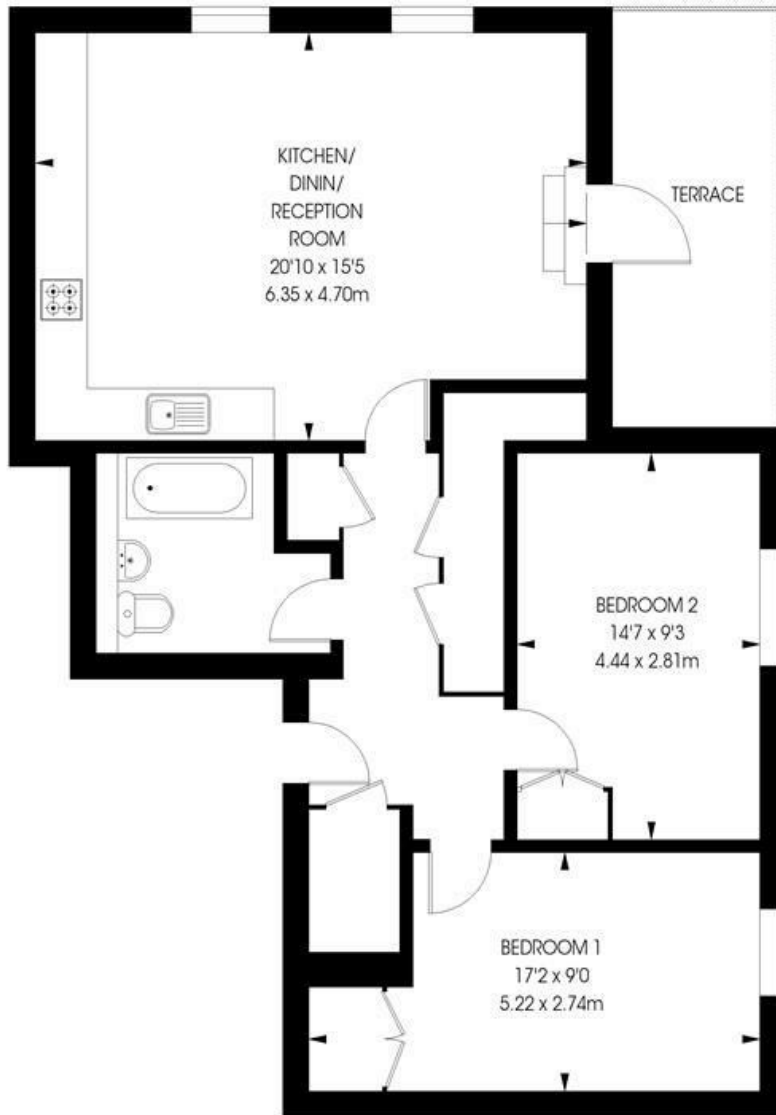
- Two double bedrooms
- Private terrace with skyline views
- Penthouse apartment
- Secure modern development
- Allocated underground parking
- Secure bike storage
- Over 800 square feet
- Clapham, Brixton and Stockwell all within an eight-minute stroll
- Walking distance to Victoria and Northern lines
- Chain-free

Council tax band D    EPC rating C (79)



**Truman House, Oak Square, SW9**  
**2 bedroom flat**

APPROXIMATE GROSS INTERNAL AREA : **802 SQ FT / 74.51 SQ M**



**FIFTH FLOOR**



While we try our very best, floor plans are produced as a guide only and we take no responsibility for the precise accuracy with which any property is represented.

Oak Square, Clapham, SW9

