



Bedford Road, Clapham, SW4

2 bedroom flat - purpose built for sale

£650,000

Leasehold

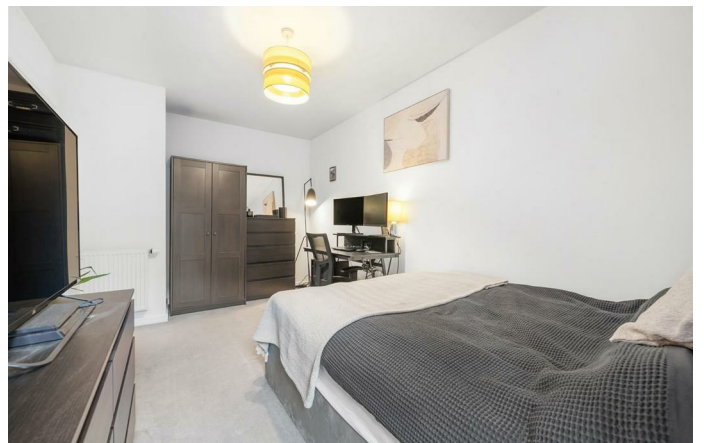
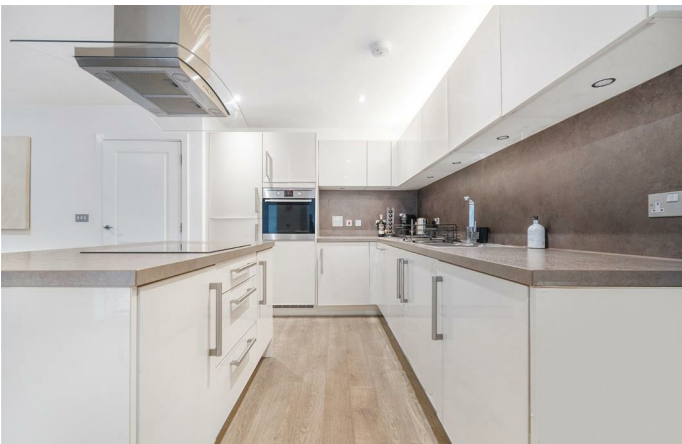
Property Details

A fantastic two double bedroom, two bathroom, two garden apartment with a private entrance in a luxury development. An appealing home with energy efficiency, good proportions and finished with exceptional attention to detail. An impressive open-plan reception has almost floor to ceiling windows for a light ambience, a spectacular space with an abundance of room to dine, relax and entertain. The gloss kitchen has integrated appliances, a sociable island, and all you need in worktop and storage. The reception opens out to the rear garden, spanning the width of the property and providing plentiful space to host BBQs and soak up the sun this wind-sheltered spot. There is bike storage in the development, yet a side gate provides another option for those with bikes. Glass and good lighting are a running theme and the double bedrooms are no exception. Both bedrooms are of similar generous proportions, separated by the hall for privacy. One benefits from the luxury of an en-suite, whilst the other boasts direct access out to the front garden, ideal for lazy morning coffees. The main bathroom is set in the centre of the home, and there are built-in cupboards within the hall and an outdoor store in the front garden.

Council tax band E EPC rating B (83)

Features

- Two double bedrooms
- Two bathrooms
- Private front and rear gardens
- Own front door
- Secure modern development
- Over 830 square feet of internal living space
- Northern Line two-minutes away
- Amenities of Clapham High Street a two minute walk
- Brixton and the Victoria Line a short stroll
- Chain-free





Bedford Road, Clapham, SW4

Bedford Road, SW4

2 Bedroom Flat

APPROXIMATE GROSS INTERNAL AREA: 832 SQ FT / 86.6 SQ M



LOWER GROUND FLOOR



While we try our very best, floor plans are produced as a guide only and we take no responsibility for the precise accuracy with which any property is represented.

Bedford Road, Clapham, SW4

