



## Kings Mews, Brixton, SW2

2 bedroom maisonette for sale

£725,000

Share of Freehold

### Property Details

An exceptional two double bedroom, two bathroom brand new maisonette, with a private landscaped garden in an exclusive gated mews. With a private entrance and over 975 square feet split over two floors, this sizeable home boasts a wonderfully bright and airy ambience. The open-plan reception is no exception, bathed in light from floor to ceiling windows to both the front and rear, with modern down lighting, high ceilings and engineered timber flooring in softly warming shades. The kitchen integrates Neff appliances within gloss cabinetry, bouncing light around the room. Sliding glass doors allow fresh air to breeze in, creating a seamless transition to the garden. With a paved seating area and lawn, this outdoor haven is perfect for hosting BBQs or soaking up the sun's rays. Upstairs, both bedrooms are comfortable doubles, separated from one another for privacy. The principal is particularly spacious with a luxurious en-suite shower room. The main bathroom has a bathtub plus overhead shower. Chic and luxurious homes engineered with energy efficiency in mind with excellent sound and heat insulation and Air Source heat pumps. Early registration of interest is advised.

Council tax band D    EPC rating B (86)

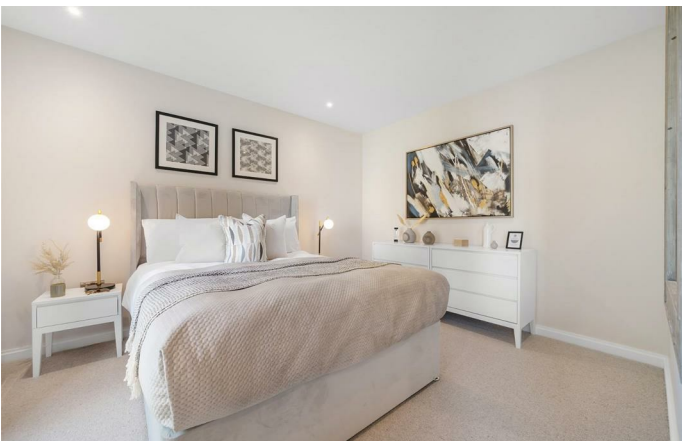
### Features

- Two double bedrooms
- Two bathrooms
- Private landscaped garden
- High-specification new build maisonette with private entrance
- Exclusive gated mews development
- Over 975 square feet
- Quietly nestled between Clapham and Brixton
- Excellent transport links plus Cycle and Car Club membership
- Share of freehold. Chain-free
- 10 year ICW New Home Warranty









Kings Mews, Brixton, SW2

## Kings Mews, SW2

### 2 Bedroom Maisonette

APPROXIMATE GROSS INTERNAL AREA: 977 SQ FT / 91 SQ M



While we try our very best, floor plans are produced as a guide only and we take no responsibility for the precise accuracy with which any property is represented.



Kings Mews, Brixton, SW2

