

**New Park Road, Brixton, SW2**

2 bedroom flat - purpose built for sale

**£515,000**

Leasehold

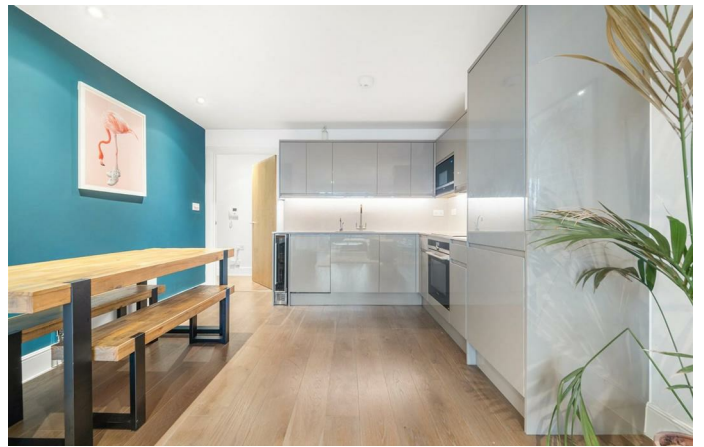
## Property Details

A stunning example of a two bedroom, two bathroom flat with a private terrace off both lounge and bedroom. The building benefits from a secure cycle storage at the back of the property as well as a communal courtyard. This beautifully presented apartment feels like a home the moment you walk through the door. The property comprises a large and airy open-plan reception room with double doors leading to the private terrace. The sleek, contemporary kitchen is finished to a high standard, fitted with all the latest mod cons including a wine fridge and a boiling water tap. Adjacent is the first double bedroom, with access to the terrace this tranquil room has multiple built-in wardrobes. The principal bedroom is a sizeable double with a contemporary en-suite bathroom. The two bathrooms in this apartment boast a high standard of fittings with a warm and inviting feel. With three storage cupboards within the hallway, there are plenty of storage options. There are also Smart features including a built-in Sonos sound system in the lounge and principal bedroom, Nest central heating, a Wifi oven and video entry phone.

## Features

- Two double bedrooms
- Two bathrooms
- Private terrace with sunset views
- Secure modern development
- Nearly 800 square feet of internal living space
- Bike storage and communal courtyard
- Outstanding build warranty
- Tucked away quietly off Brixton Hill
- Local amenities on the doorstep
- Chain-free

Council tax band D    EPC rating B (83)

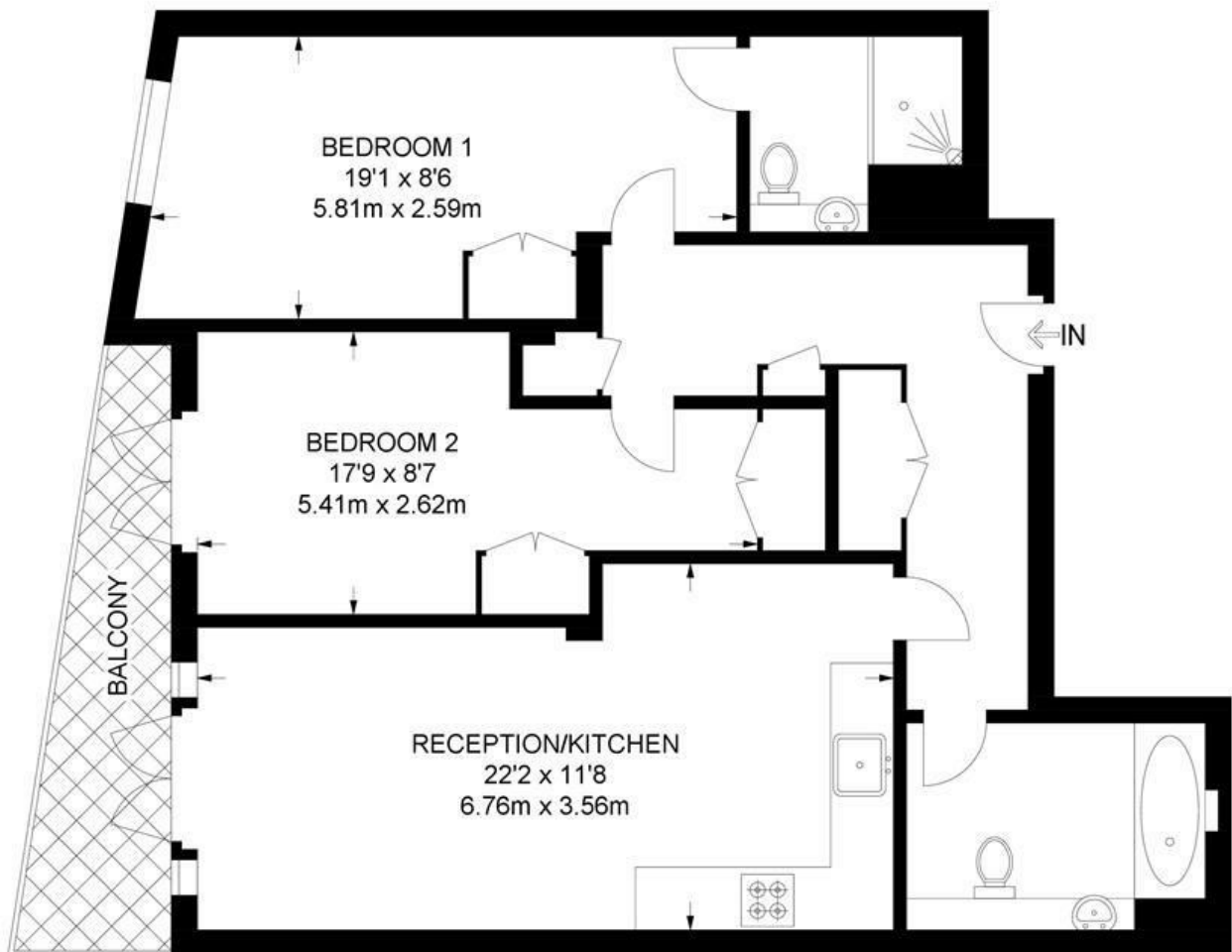




New Park Road, Brixton, SW2

**New Park Road, SW2**  
**2 Bedroom Flat**

APPROXIMATE GROSS INTERNAL AREA: **774 SQ FT / 72 SQ M**



**FIRST FLOOR**



While we try our very best, floor plans are produced as a guide only and we take no responsibility for the precise accuracy with which any property is represented.

New Park Road, Brixton, SW2

