



**Bromfelde Road, Clapham, SW4**

1 bedroom flat to let

**£364 Per Week**

Furnished

## Property Details

An immaculately presented one double bedroom first floor flat- situated in the heart of Clapham. The property comes complete with a spacious double bedroom with built-in wardrobe, a large living room with ample space for a dining area, and a large living area, The kitchen is a long galley style kitchen off the living room with modern units and appliances on both sides and the bathroom is large, luxurious and bright. The property has been neutrally decorated throughout and has large windows allowing plenty of light to fill each room. Within a ten-minute stroll down the road, you will reach the vibrant and diverse Clapham High Street offering cracking nightlife and culinary delights. In the other direction, you will have everything that Brixton has to offer, from music venues and the extremely popular Brixton Village, to large brand-shops and convenient transport links (Clapham North is around a seven minute walk away).

Council tax band C      EPC rating C (72)

## Features

- 1 Double Bedroom
- Bright and Airy
- Close to Transport Links
- Close to Clapham Common
- Central Location
- Furnished



Bromfelde Road, Clapham, SW4

## Bromfelde Road

# K

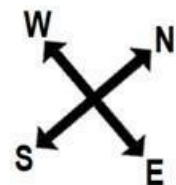
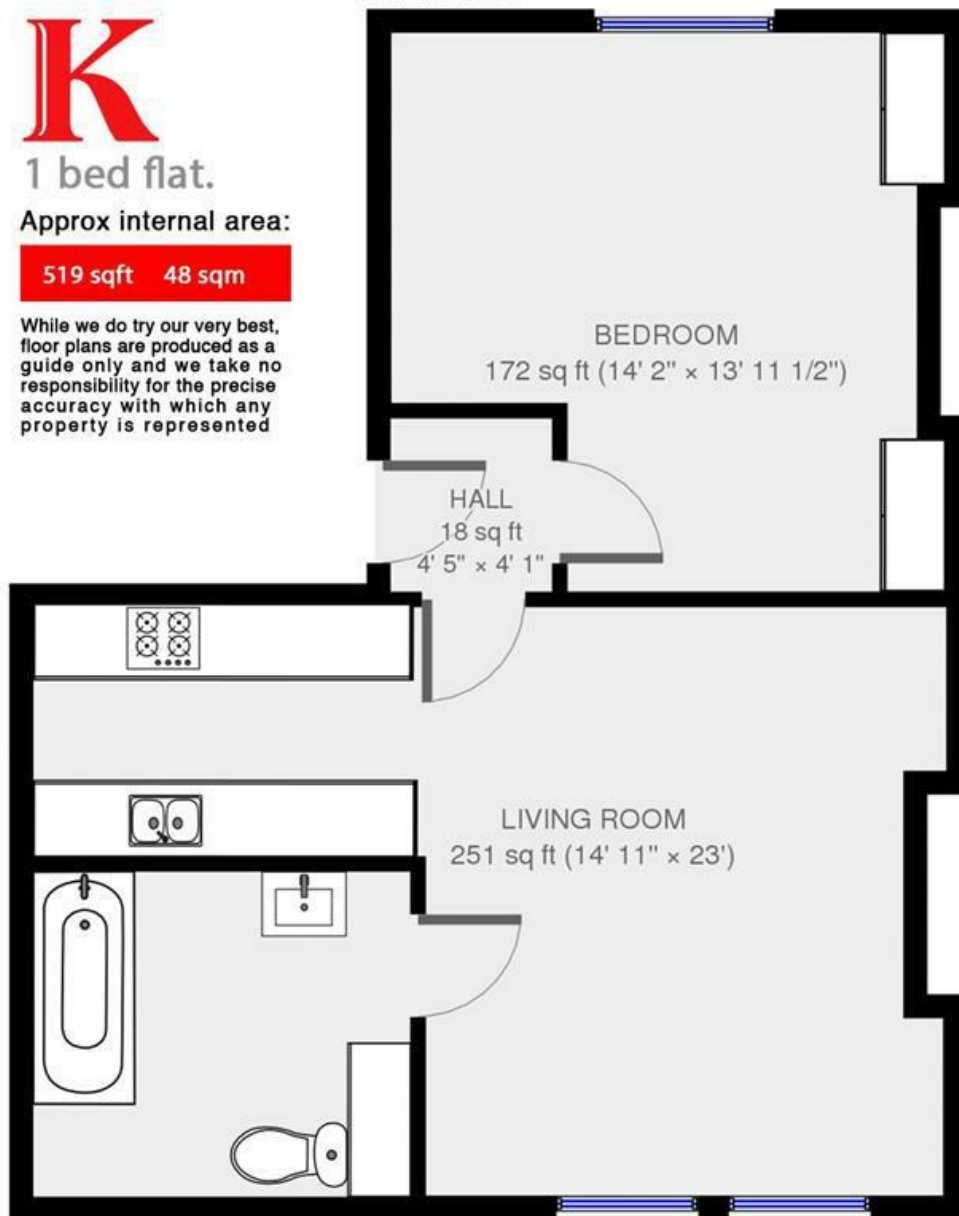
1 bed flat.

Approx internal area:

519 sqft 48 sqm

While we do try our very best, floor plans are produced as a guide only and we take no responsibility for the precise accuracy with which any property is represented

First Floor



Bromfelde Road, Clapham, SW4

