



Holmewood Road, Brixton, SW2

3 bedroom flat - conversion for sale

£650,000

Share of Freehold

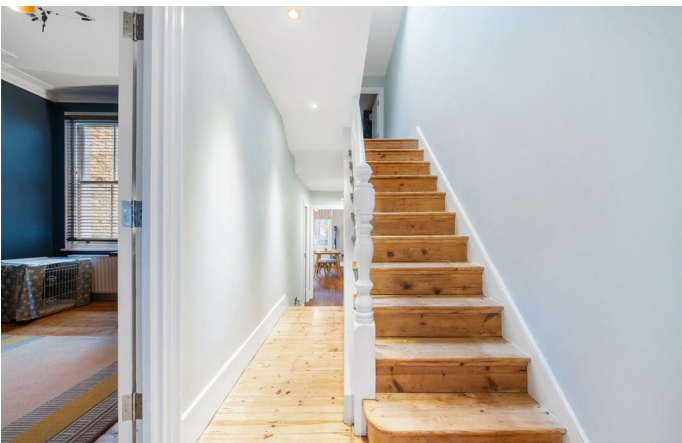
Property Details

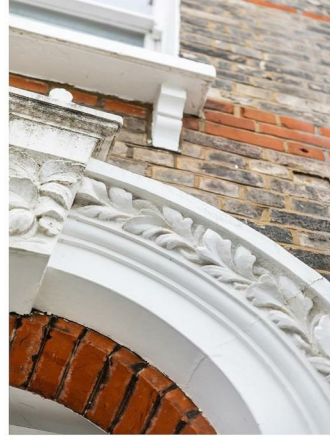
An exceptional three double bedroom split-level Victorian apartment within a quiet residential pocket on a no-through road adjacent to a beautiful garden square, with easy access to central Brixton, Streatham and Clapham. This characterful home has been lovingly cared for, resulting in a home with an appealing blend of contemporary design and charming period features. With over 1,100 square feet of living space on offer, three large bedrooms and two family bathrooms, the property is sure to tick boxes for a wide range of purchasers. Holmewood Road is a quiet residential street situated in the extremely popular residential pocket of Holmewood Gardens. The attractive period terrace row surrounds a pretty garden square with a children's playground and is a short walk from Brixton Hill where buses run every couple of minutes to Brixton centre. Brixton town centre and Brixton Village are within a fifteen to seventeen-minute walk, or a few minutes if you were to jump on one of the many buses that flow down Brixton Hill and into central London.

Features

- Three double bedrooms
- Victorian conversion
- Adjacent to a pretty garden square
- Beautifully presented throughout
- Over 1,100 square feet
- Local shops, cafes, schools and pub
- Fifteen-minute walk to Brixton
- Nine-minute walk to Streatham Hill
- Excellent variety of transport links
- Share of freehold

Council tax band D EPC rating C (74)

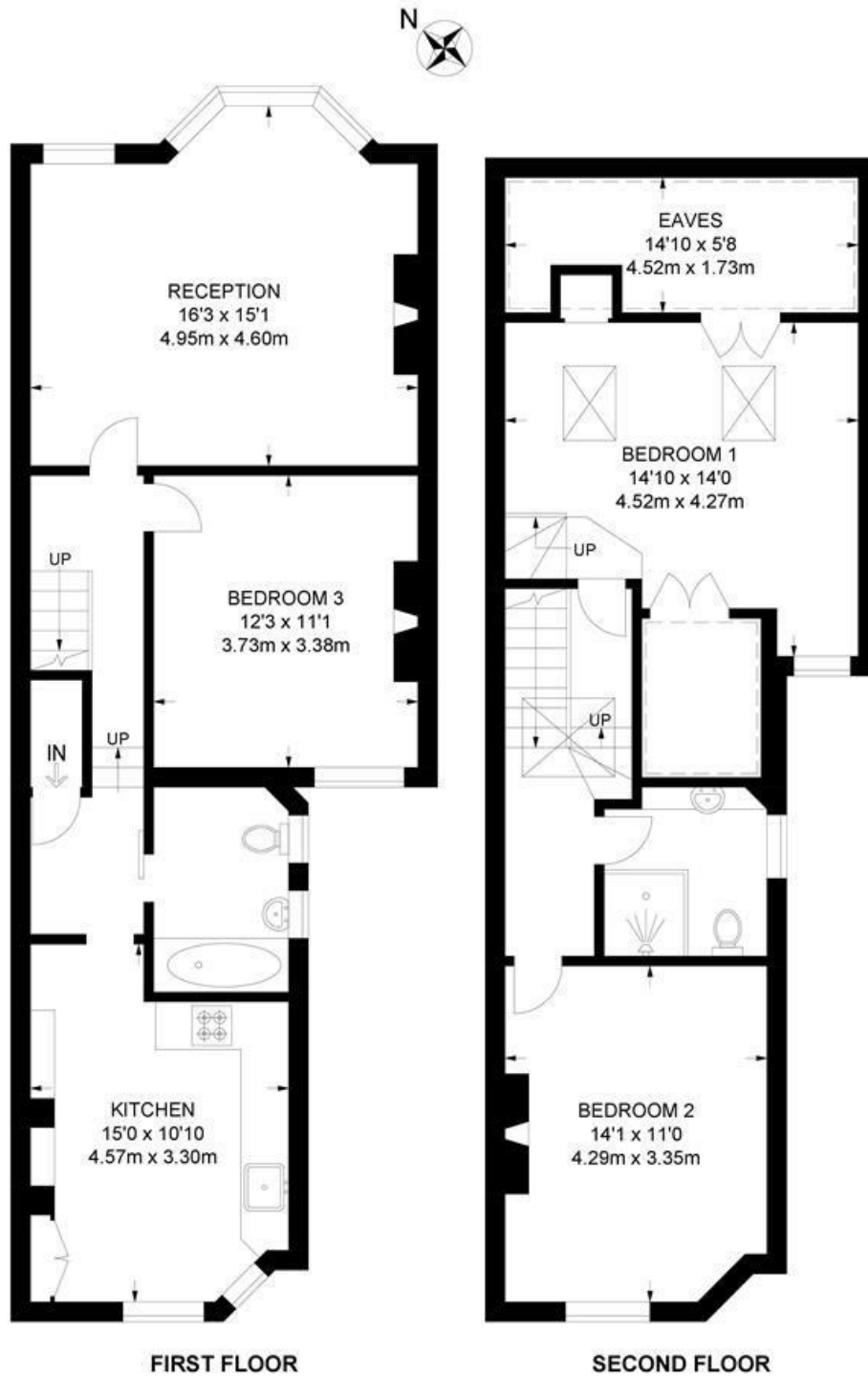




Holmewood Road, Brixton, SW2

Holmewood Road, SW2
3 Bedroom Flat

APPROXIMATE GROSS INTERNAL AREA: 1246 SQ FT / 115.7 SQ M



While we try our very best, floor plans are produced as a guide only and we take no responsibility for the precise accuracy with which any property is represented.

Holmewood Road, Brixton, SW2

