

Acre Lane, Brixton, SW2

1 bedroom flat - purpose built to let

£485 Per Week

Furnished

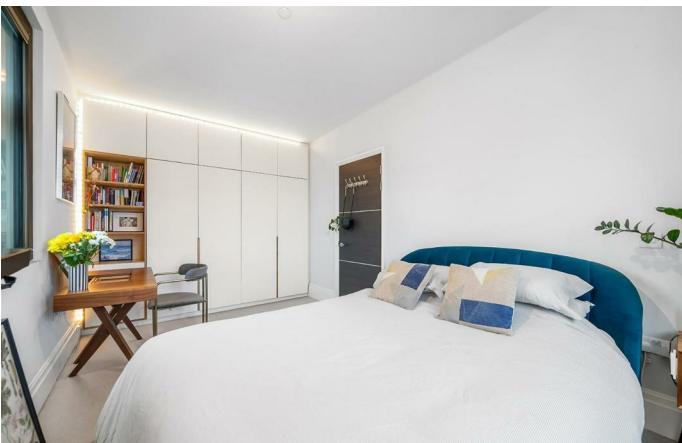
Property Details

An upgraded one double bedroom penthouse with additional light and privacy plus fantastic views across the Skyline of Canary Wharf, The Shard, St Paul's and the Townhall clocktower. This high-end apartment has had further luxuries added, with custom built storage throughout designed by an architect and interior designer. An open-plan reception has large windows, parquet flooring and space to relax or dine at the table. The integrated kitchen is sleek with a sociable breakfast bar. Adjacent, two storage cupboards, one custom built provide more storage, pantry and cloakroom. The double bedroom is spacious with quadruple glazed windows with sunrise views plus blackout blinds. A bespoke wardrobe lines one wall. The bathroom is luxurious with a double ended bath with shower overhead and bespoke mirrored cabinets with lighting underneath. Quietly facing away from Acre Lane, elevated over the top floor, with fantastic insulation and double and quadruple glazed windows for high energy efficiency. This sought-after development has just twenty-six privately owned apartments, beautiful communal areas, a lift and bike storage.

Council tax band C EPC rating C (80)

Features

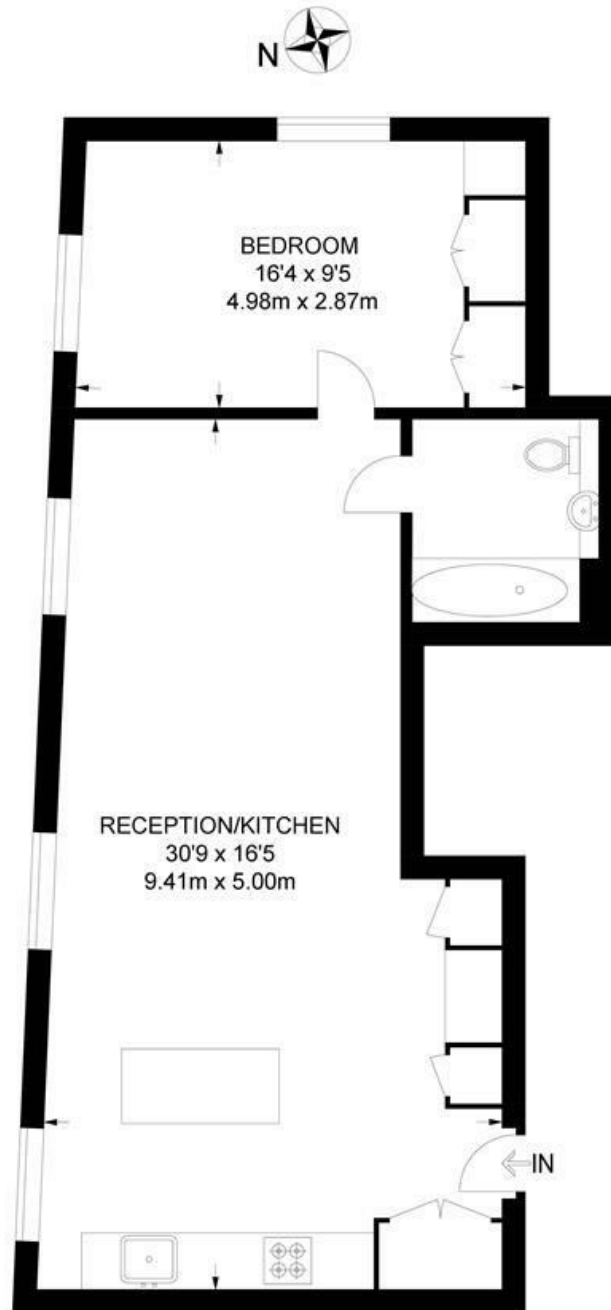
- One double bedroom
- Secure modern build in Art-Deco style
- Top floor setting facing away from Acre Lane
- Fantastic views
- Beautifully presented
- High-end finishes
- Victoria and Northern Lines
- Lift and bike storage
- Central location in Brixton



Acre Lane, Brixton, SW2

Ivor House, SW2
1 Bedroom Flat

APPROXIMATE GROSS INTERNAL AREA: 630 SQ FT / 58.5 SQ M



FOURTH FLOOR



While we try our very best, floor plans are produced as a guide only and we take no responsibility for the precise accuracy with which any property is represented.

Acre Lane, Brixton, SW2

