



Solon Road, Brixton, SW2

4 bedroom house to let

£992 Per Week

Furnished

Property Details

A charming four double bedroom house between Clapham and Brixton. The ground floor comprises a spacious open plan reception room and dining area and a modern kitchen diner which leads onto a sunny private garden. On the upper floors sit the four double bedrooms and two modern bathrooms. With Brixton being a short walk away, you will have everything that the area has to offer including Brockwell Park, Brixton Village and excellent transport links. In the other direction, you will be in the vibrant heart of Clapham offering great dining and nightlife and the green open spaces of Clapham Common.

Features

- Four double bedrooms
- Two bathrooms
- Reception and dining area and separate kitchen
- Private East-facing garden
- Victorian terraced house
- Close to both the Victoria and Northern line

Council tax band E EPC rating D (59)



Solon Road, Brixton, SW2

Solon Road

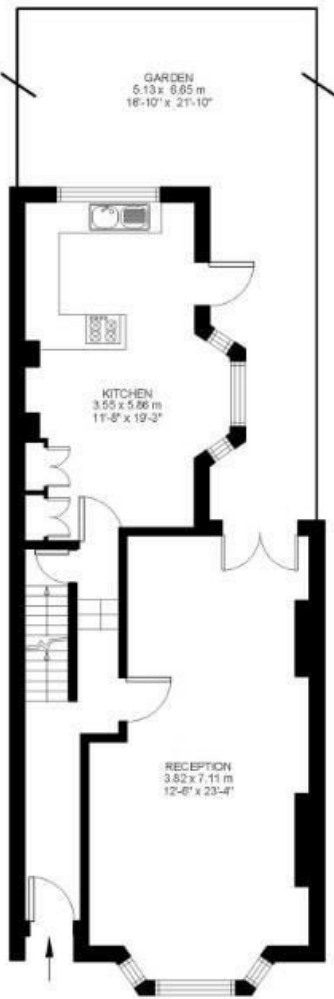
K

4 Bed house

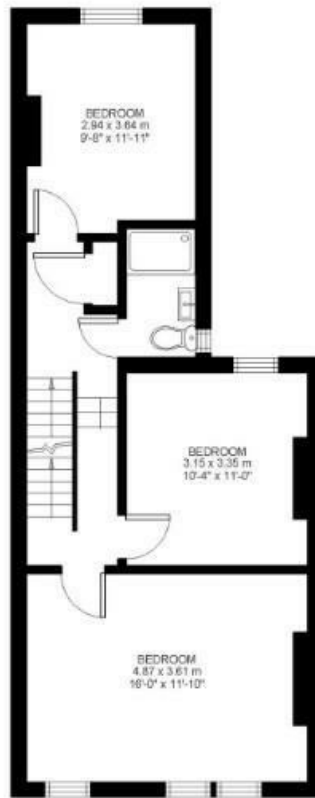
Approx internal area:

1450 sqft 135 sqm

While we do try our very best, floor plans are produced as a guide only and we take no responsibility for the precise accuracy with which any property is represented



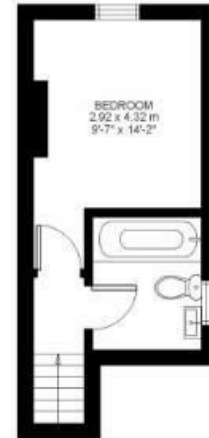
Ground Floor



First Floor



Basement



Second Floor



Solon Road, Brixton, SW2

