

Gauden Road, Clapham, SW4

1 bedroom flat - conversion for sale

£425,000

Share of Freehold

Property Details

A unique and stunning split-level Victorian apartment on the fringes of the desirable Sibella Conservation Area, within a quiet residential pocket close to the heart of Clapham. Split over two elevated floors with a bright and private setting to the rear of the property with dual-aspect windows. Upon entering, the entrance hall is complete with a bike sling, leading into the open-plan reception. The lounge area and well-equipped kitchen are separated by an attractive archway and a characterful cast iron spiral staircase. Large South and East facing sash windows are highly impactful and flood this fantastic entertaining space with natural light. Atop the charming staircase, the bedroom is a soothing spot with neutral presentation, fitted storage and space for a dressing table or desk if desired. Completing this lovely home is the spacious bathroom with a bathtub and overhead rain shower and yet another large window. A great first time purchase or pied-à-terre.

Features

- One double bedroom
- Victorian apartment
- Split over two floors
- Unique and characterful
- Bright and airy with large windows
- Amenities of Clapham High Street a two-minute stroll
- Northern Line and Overground
- Clapham Old Town and Common a short walk away
- Share of freehold
- Chain-free

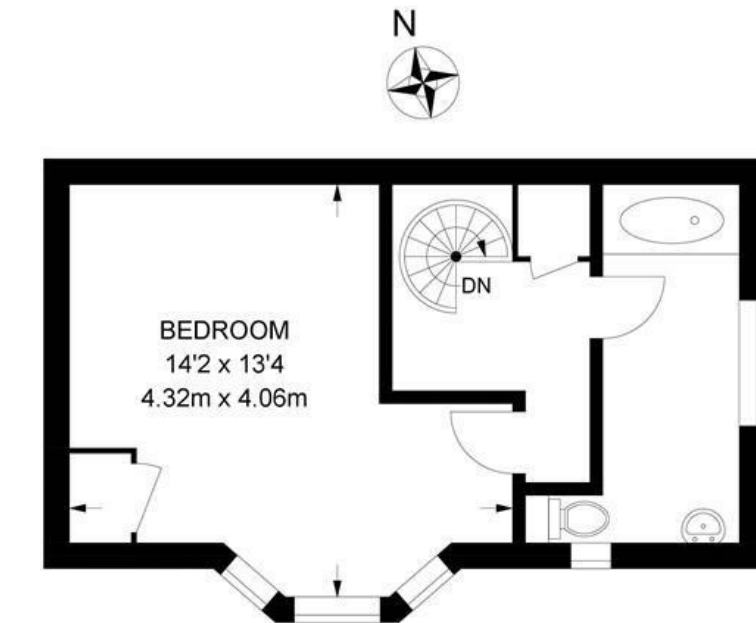
Council tax band C EPC rating C (69)



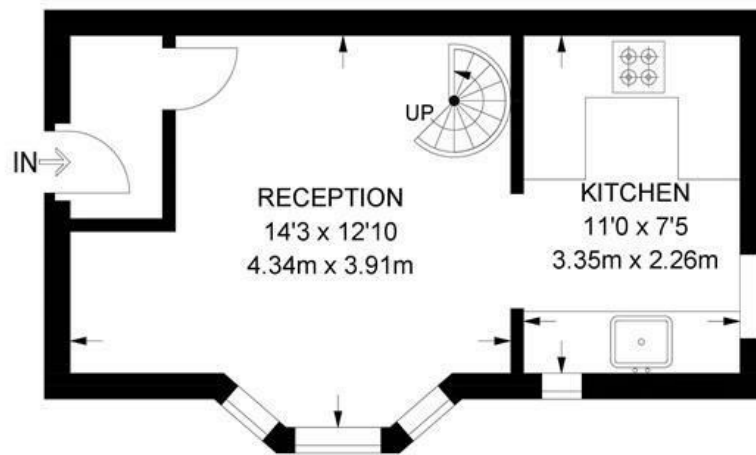
Gauden Road, Clapham, SW4

Gauden Road, SW4
1 Bedroom Flat

APPROXIMATE GROSS INTERNAL AREA: **522 SQ FT / 48.5 SQ M**



SECOND FLOOR



FIRST FLOOR



While we try our very best, floor plans are produced as a guide only and we take no responsibility for the precise accuracy with which any property is represented.

Gauden Road, Clapham, SW4

