



Flaxman Road, Brixton, SE5

4 bedroom maisonette for sale

£649,950

Share of Freehold

Property Details

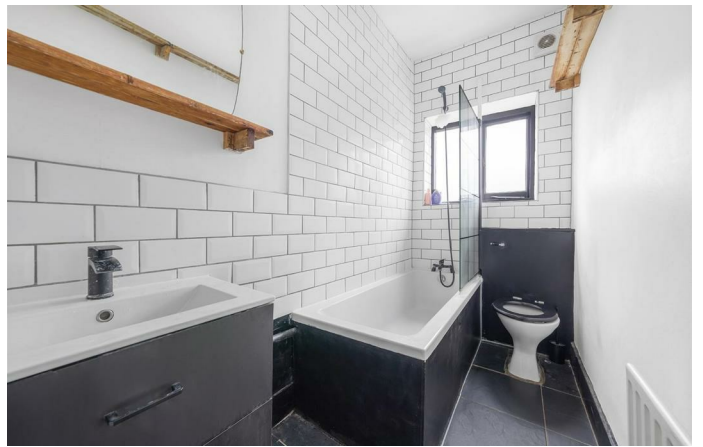
Over 1,420 square feet, an incredibly spacious four bedroom, split-level maisonette, in a charming period townhouse with Ruskin Park nearby. Updated in the last year with a new kitchen, updated bathroom and roof repair. To the front of the property, benefitting from large sash windows is a spacious reception room spanning the width of the property and brimming with characterful charm. The kitchen is adjacent, offering the opportunity to combine the two (subject to permissions), where marbled surfaces span sleek cabinetry, complete with trendy tiling. Completing the first floor is the bathroom, with a bath and shower, crittall style screen and a chic storage basin. The upper floors of this charming property provide four double bedrooms, three of the bedrooms are arranged over the second floor, two of which are particularly generous in size, with the third still being a genuine double. Additional storage is available on this floor in the form of a hallway cupboard. The fourth bedroom is nestled on the upper floor with exposed brickwork, skylights and access to eaves storage.

Council tax band D

EPC rating D (59)

Features

- Four bedrooms
- Period maisonette
- Private entrance
- Over 1,420 square feet of internal space
- Split-level
- Minutes from Ruskin Park
- Close walking distance to the station
- Access to Brixton, Camberwell and Herne Hill
- Share of freehold
- Chain-free



Flaxman Road, Brixton, SE5

Flaxman Road,
Loughborough Junction, SE5
4 bedroom flat

Approximate internal area:
(Including Eaves Storage)
Eaves Storage area:

1421 sqft / 132 sqm

237 sqft / 22 sqm



While we try our very best, floor plans are produced as a guide only and we take no responsibility for the precise accuracy with which any property is represented.



Flaxman Road, Brixton, SE5

