



Helix Gardens, Brixton, SW2

2 bedroom flat to let

£507 Per Week

Furnished

Property Details

A stunning two bedroom flat situated just a stones throw away from Brockwell park. This stunning flat comprises two good sized double bedrooms, an open plan kitchen and reception with heaps of natural light - both the bedrooms and kitchen/reception area have a warm yet contemporary feel through the wooden furnishing and decor. The property is finished off with a modern family sized bathroom. The future tenants for this property have the added benefit of being in a freshly decorated home as it's currently going under extensive redecoration. Living here you'll be just around a six minute walk from the beloved Brockwell park and around a fourteen minute walk to Herne Hill station - you're also in walking distance of everything that vibrant Brixton has to offer.

Features

- Two bedrooms
- Open plan kitchen and reception
- Around a 6 minute walk to Brockwell park
- Bright and airy
- Around a 14 minute walk to Herne Hill station
- Wooden flooring
- Newly redecorated

Council tax band C EPC rating D (68)





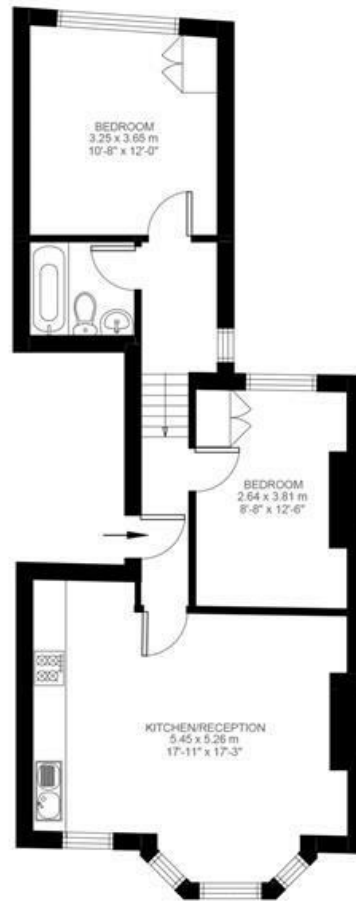
Helix Gardens

2 Bedroom Flat

Approx internal area:

600 sqft 56 sqm

While we do try our very best, floor plans are produced as a guide only and we take no responsibility for the precise accuracy with which any property is represented



First Floor



Helix Gardens, Brixton, SW2

