



Half Moon Lane, Herne Hill, SE24

2 bedroom flat to let

£438 Per Week

Part furnished

Property Details

A modern well proportioned two double bedroom flat located a hop, skip and jump away from North Dulwich train station which has direct trains straight into the city taking less than twenty minutes. The flat consists of an open plan kitchen/ reception, two double bedrooms and a sleek family size bathroom. There is also access to a well kept communal garden. As far as locations go it's ideal, just a short walk away from the green open spaces of Brockwell Park, lauded as London's best outdoor space by locals. With its lovely 1930's Lido its perfect for these summer months to relax with friends and family. Leafy Herne Hill offers a wide range of amenities, with plenty of great pubs, cafes, and restaurants on the doorstep. Brixton is a five-minute bus journey or a twenty-minute walk across Brockwell Park.

Features

- Two double bedrooms
- Open plan
- Spacious
- Bright and airy throughout
- Close to transport links
- Close to Brockwell park

Council tax band D EPC rating E (42)





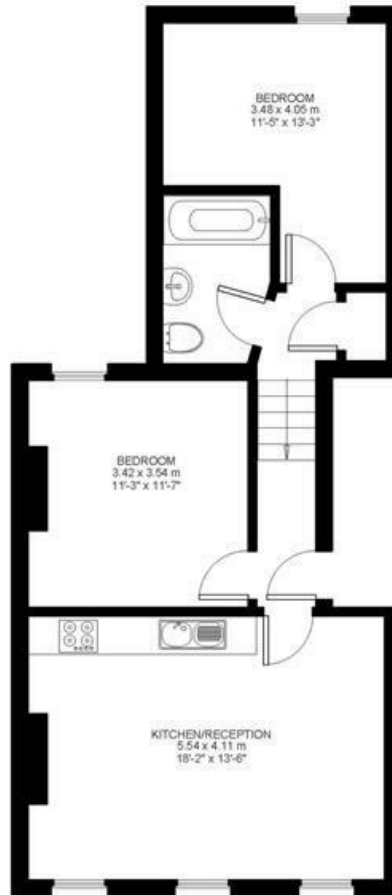
Half Moon Lane

2 Bed flat

Approx internal area:

632 sqft 59 sqm

While we do try our very best, floor plans are produced as a guide only and we take no responsibility for the precise accuracy with which any property is represented



Second Floor



Half Moon Lane, Herne Hill, SE24

