

Fleet House , Effra Parade, Brixton, SW2

2 bedroom flat to let

£461 Per Week

Part furnished

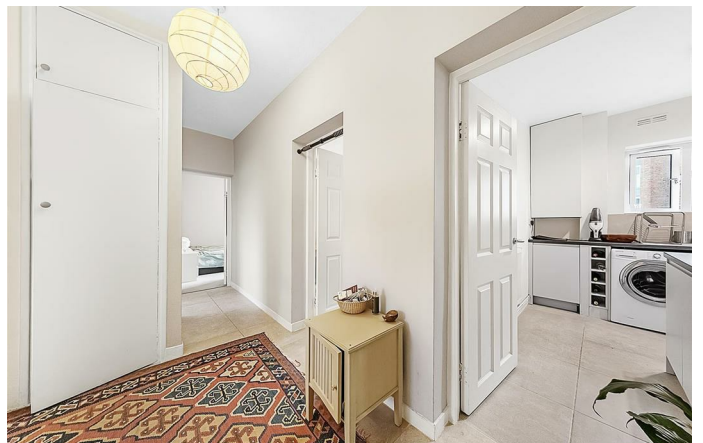
Property Details

Gorgeously spacious two bedroom flat - situated on the doorstep of beautiful Brockwell park. This lovely property comprises a large and bright living space with integrated open plan kitchen , two double bedrooms and a sleek modern family bathroom. Living here you will be around a four minute walk away from the scenic Brockwell Park, although you will be blessed with a cozy outdoor space at the flat in the form of a stunning private terrace.

Features

- Two bedrooms
- Close to Brockwell Park
- Close to Brixton Town Centre
- Good transport links
- Light and airy

Council tax band B EPC rating D (62)





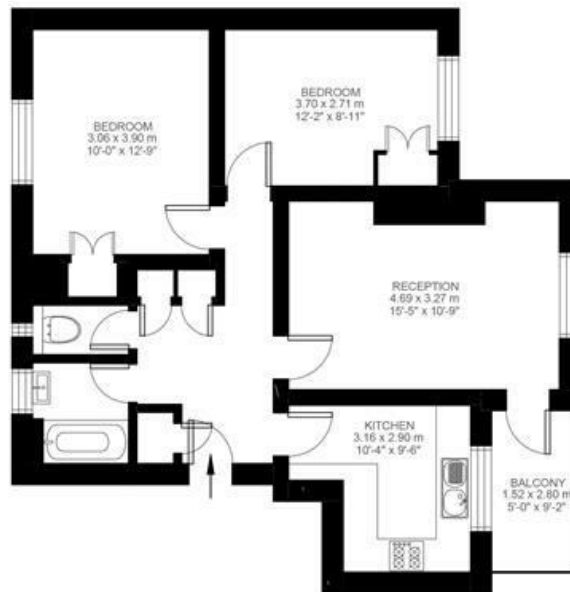
Effra Parade

2 Bedroom Flat

Approx internal area:

709 sqft 66 sqm

While we do try our very best, floor plans are produced as a guide only and we take no responsibility for the precise accuracy with which any property is represented



Second Floor



Fleet House , Effra Parade, Brixton, SW2

