



Chalice Way, Brixton, SW2

1 bedroom flat - purpose built for sale

£325,000

Leasehold

Property Details

A light and well-presented one double bedroom flat, with incredible views of the London skyline from its wraparound private balcony, within a secure and well-maintained block at the top of Brixton Hill. With over 500 square feet of usable internal living space, this property has great dimensions and comprises a comfortable double bedroom, a modern bathroom, a bright and functional kitchen and a lovely separate reception room which is flooded with natural light through multiple large paned windows. The living space flows seamlessly onto the fantastic private terrace: this large, wraparound balcony provides some serious wow-factor with incredible views over the city and will lend itself perfectly to summer BBQs and parties, ideal for the warmer months. The property is in good condition, ideal for anyone looking to move into a new property without any hassle.

Council tax band B

EPC rating C (71)

Features

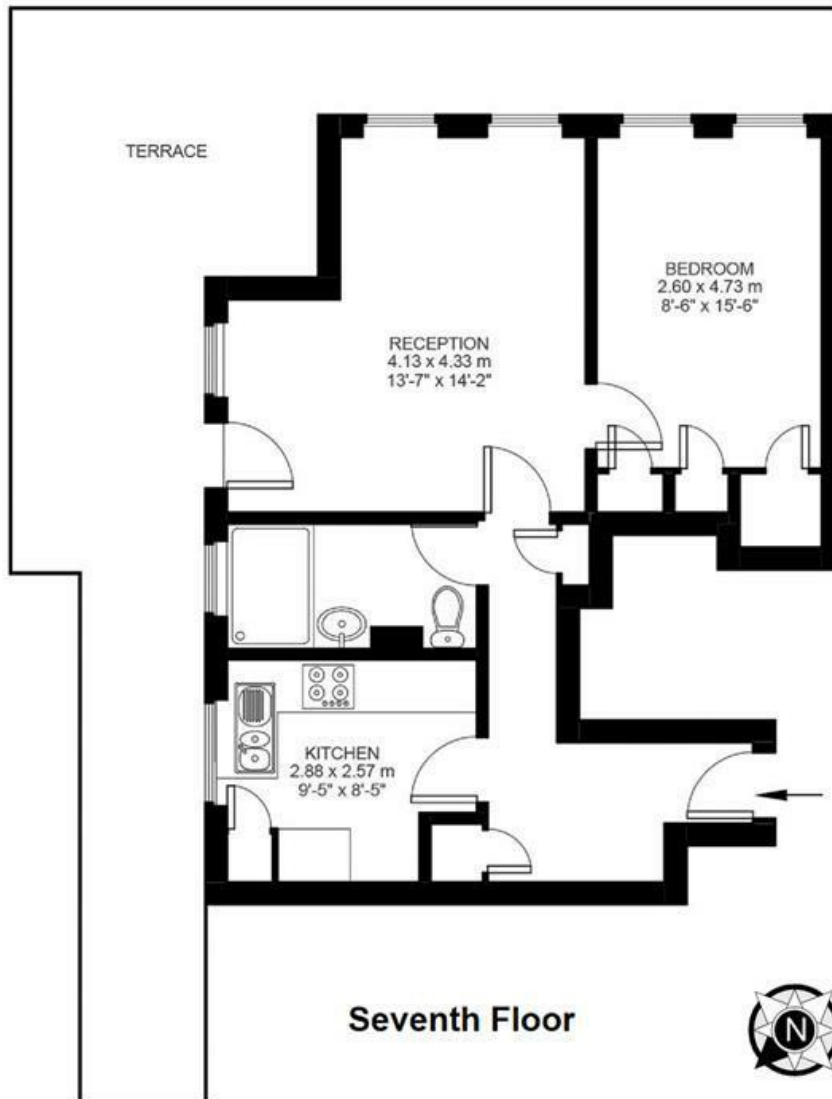
- One double bedroom
- Large wrap around private terrace
- Panoramic views of the London skyline
- Seventh floor of a secure building
- Over 500 square feet of internal living space
- Lift to sixth floor
- Parking on first come first served basis
- Amenities of Brixton, Streatham, Herne Hill and Clapham
- Walking distance to Brockwell Park
- Chain-free



Challice Way, Brixton, SW2

Challice Way, SW2
1 Bedroom Flat

APPROXIMATE GROSS INTERNAL AREA: **516 SQ Ft / 48 SQ M**



While we try our very best, floor plans are produced as a guide only and we take no responsibility for the precise accuracy with which any property is represented.

Challice Way, Brixton, SW2

