



Kings Mews, Brixton, SW2

3 bedroom maisonette for sale

£740,000

Share of Freehold

Property Details

An exceptional three double bedroom, two bathroom brand new maisonette, with a private terrace in an exclusive gated mews. With a private entrance and over 1,040 square feet split over two floors, this sizeable home boasts a bright and airy ambience, with additional light and privacy owing to the positioning over the upper floors. Set atop the home, the open-plan reception is bathed in light from large windows framed by cavernous lofty ceilings. The kitchen integrates Neff appliances within gloss cabinetry, bouncing light around the room. Sliding glass doors allow fresh air to breeze in, creating a seamless transition to the terrace. A particularly private spot the terrace is perfect for soaking up the sun, stars and city lights. All three double bedrooms are separated from one another for privacy. The principal is particularly spacious with a luxurious en-suite. The smallest of the three is enhanced by a walk-in wardrobe, ensuring the space behind the picture-frame window is reserved as an inviting bed chamber. The main bathroom has a bathtub plus overhead shower. Chic and luxurious homes engineered with energy efficiency in mind with excellent sound and heat insulation and Air Source heat pumps. Early registration of interest is advised.

Council tax band D EPC rating B (86)

Features

- Three double bedrooms
- Two bathrooms
- Private terrace
- High-specification new build maisonette with private entrance
- Exclusive gated mews development
- Over 1,040 square feet
- Quietly nestled between Clapham and Brixton
- Excellent transport links plus Cycle and Car Club membership
- Share of freehold. Chain-free
- 10 year ICW New Home Warranty

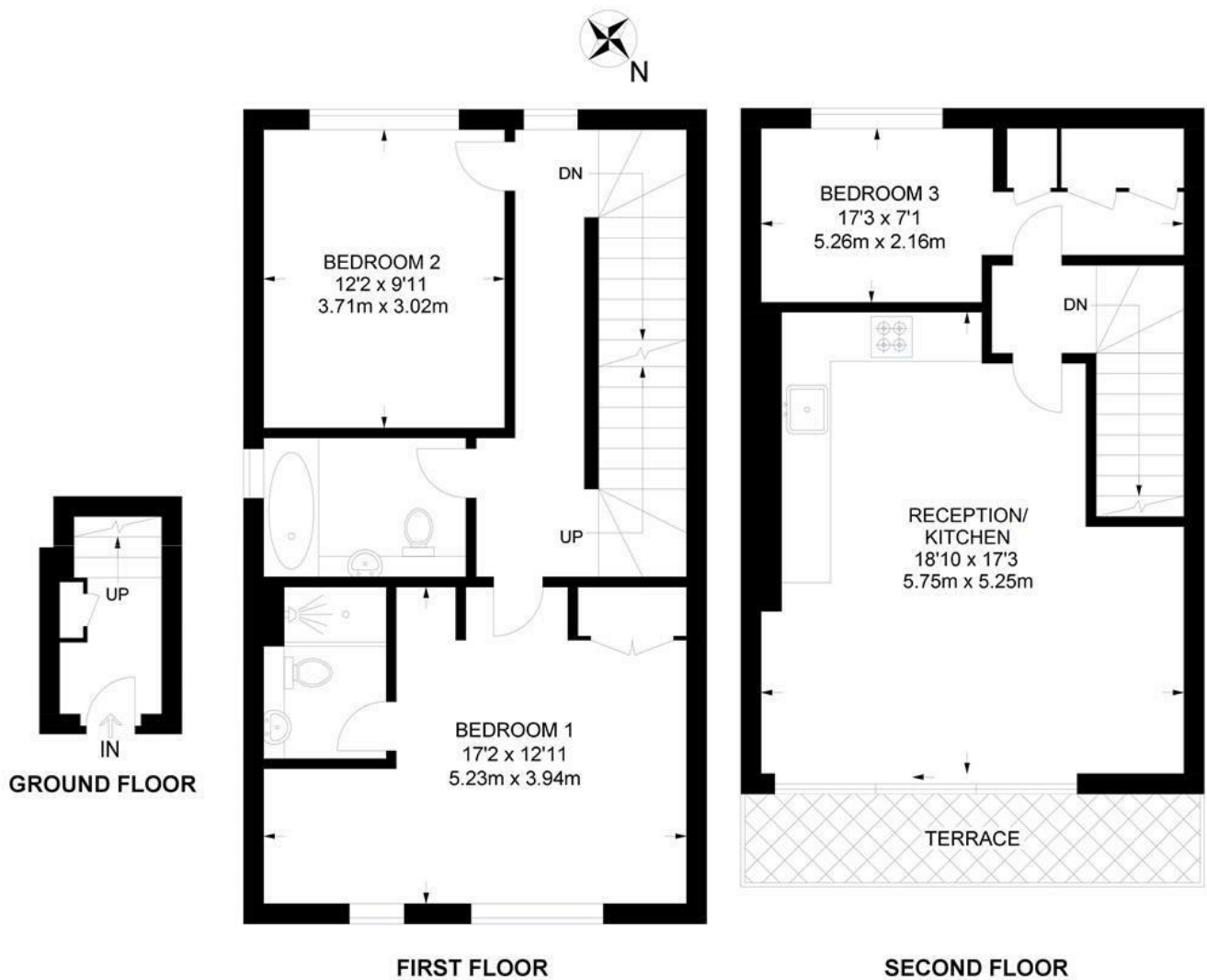




Kings Mews, Brixton, SW2

Kings Mews, SW2
3 Bedroom Maisonette

APPROXIMATE GROSS INTERNAL AREA: **1045 SQ FT / 97.2 SQ M**



While we try our very best, floor plans are produced as a guide only and we take no responsibility for the precise accuracy with which any property is represented.

Kings Mews, Brixton, SW2

