

Ashmere Grove, Brixton, SW2

1 bedroom flat to let

£403 Per Week

Furnished

Property Details

A stunning and spacious top floor flat - situated around a twelve minute walk from the buzz Brixton High Street. This beautiful property comprises of a large open plan modern kitchen/reception area with space three lovely sky lights flooding the room with natural light and also has space for a dining table and chairs, a lovely bright bedroom and a sleek family size bathroom. Living here , you have easy access to three tube stations , linking you conveniently to central and all the amazing amenities it has to offer.

Features

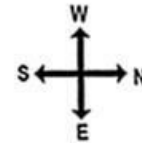
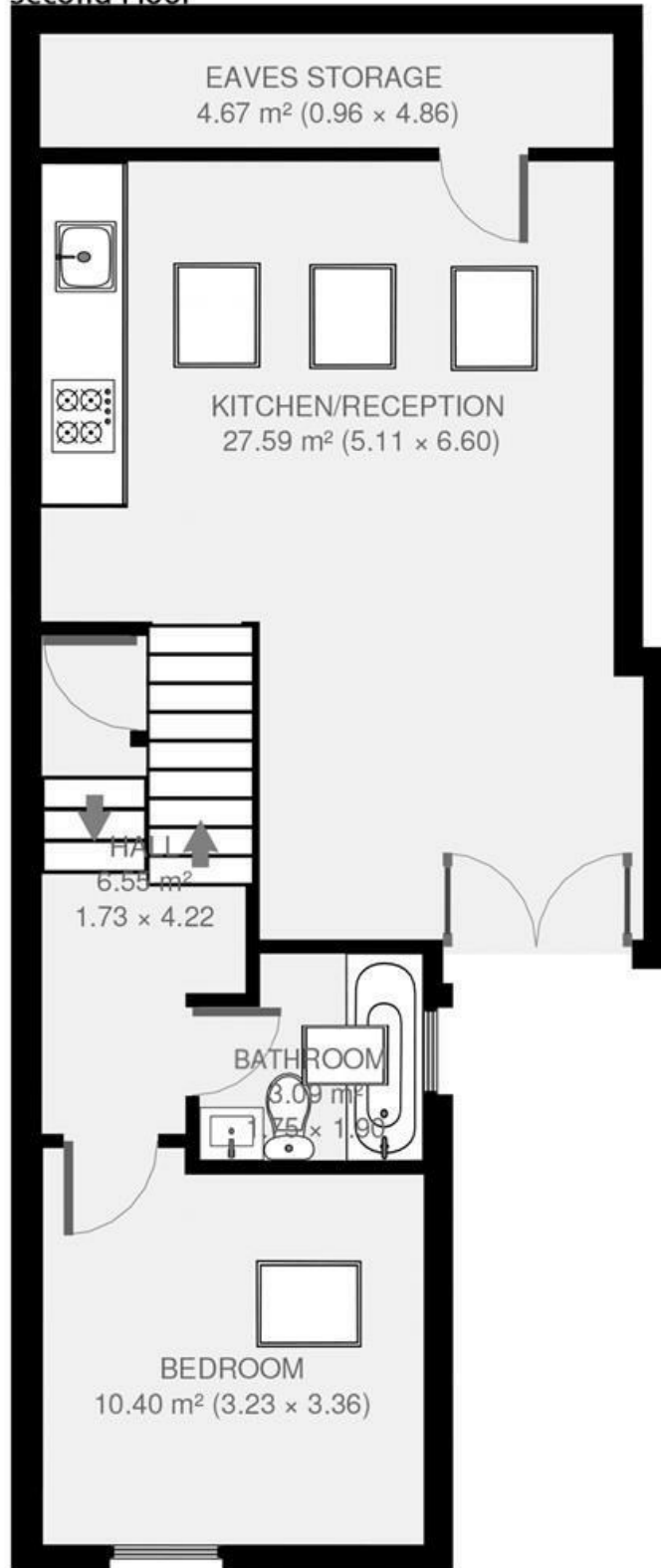
- Split-level
- Central location
- Victorian conversion
- Bright and airy throughout
- Close to clapham common
- Furnished

Council tax band C EPC rating B (81)



Ashmere Grove

Second Floor



1 bed Flat.

Approx internal area:

593 sqft 55 sqm

While we do try our very best, floor plans are produced as a guide only and we take no responsibility for the precise accuracy with which any property is represented

Ashmere Grove, Brixton, SW2

