



Palace Road, Brixton, SW2

3 bedroom flat for sale

£600,000

Leasehold

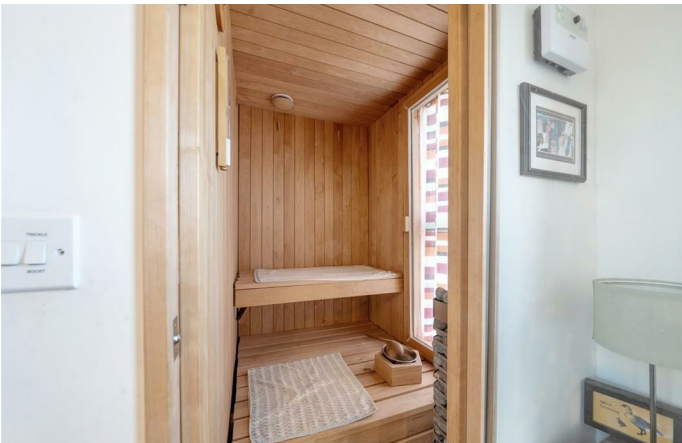
Property Details

An exceptional three-bedroom, two-bathroom apartment with a private terrace, sauna, allocated parking, and access to a shared garden, located in a charming, community-spirited development of just eleven homes. Boasting stunning views over a lush green expanse, this tranquil home offers an idyllic retreat from city life while remaining well-connected. The property combines exceptional build quality with a smartly designed layout. Bright throughout the day, sunlight graces the principal bedroom in the mornings before transitioning to the open-plan kitchen, reception area, and terrace in the afternoons and evenings. The heart of the home is the open-plan kitchen and reception room, featuring a contemporary kitchen with ample storage and dual-aspect windows flooding the space with natural light. Direct access to the private terrace creates a serene spot for al-fresco dining or soaking in the scenery. The principal bedroom boasts mirrored wardrobes, an en-suite, and a luxurious sauna. Two further bedrooms offer versatile spaces with green views. Additional perks include allocated parking, a shared garden, and a bike shed, enhancing the appeal of this remarkable home.

Features

- Three double bedrooms
- Two bathrooms
- Private roof terrace
- Lush green views
- Sauna
- Allocated parking
- Neighbourly development of just eleven homes
- Streatham High Street a six-minute stroll
- Brixton, Clapham, Balham and Tulse Hill all within walking distance

Council tax band C EPC rating B (85)



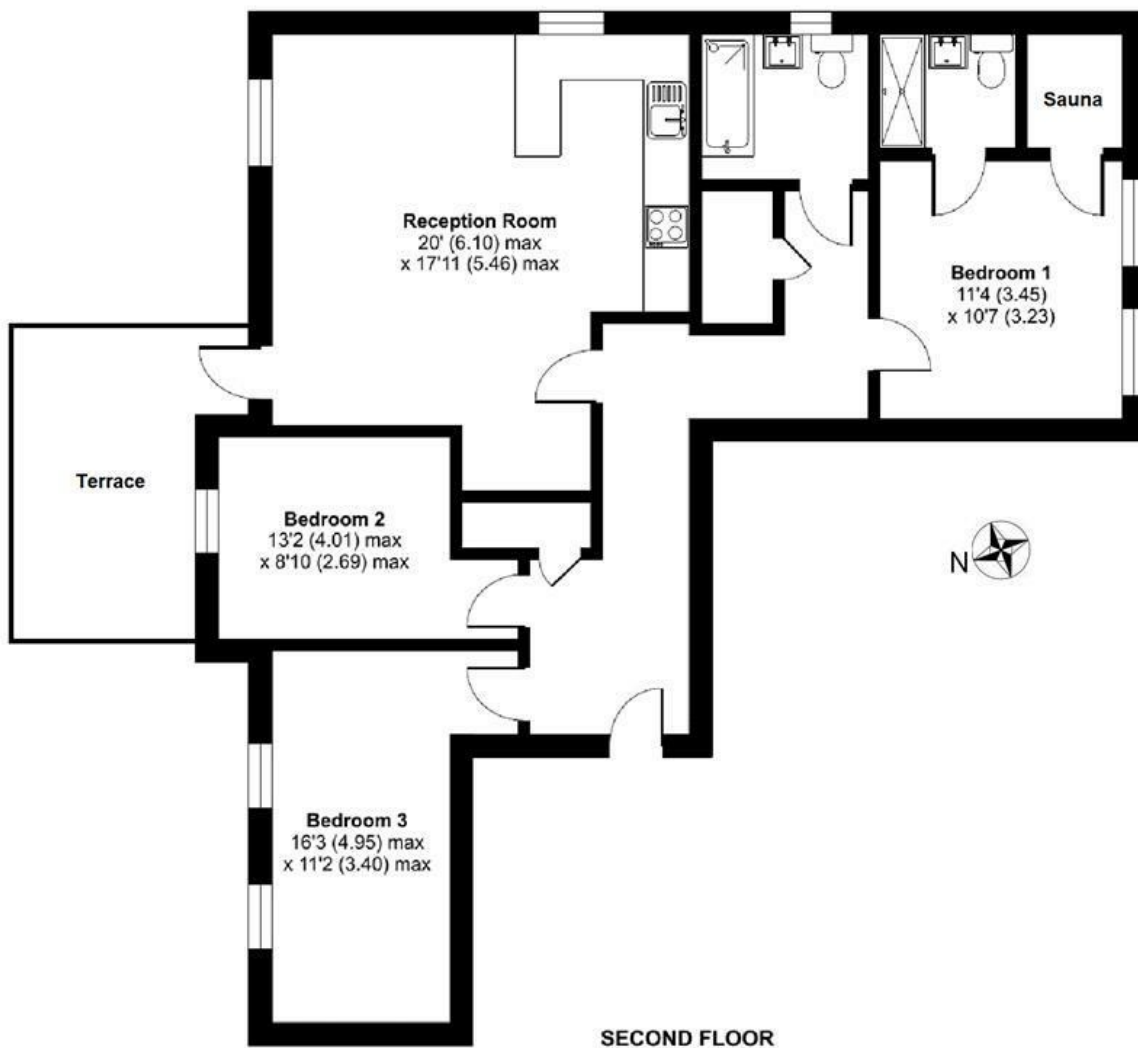


Palace Road, Brixton, SW2

Palace Road, SW2

3 Bedroom Flat

APPROXIMATE GROSS INTERNAL AREA: **987 SQ FT / 91.7 SQ M**



While we try our very best, floor plans are produced as a guide only and we take no responsibility for the precise accuracy with which any property is represented.

Palace Road, Brixton, SW2

