



Belvedere Place, Brixton, SW2

1 bedroom flat for sale

£400,000

Leasehold

Property Details

Nestled within a secure, gated mews this delightful one-bedroom apartment offers tranquil living just minutes from Brixton's Victoria line and vibrant town centre. Positioned on the third floor, the home enjoys elevated privacy, abundant natural light, and charming skyline views over the rooftops. The open-plan reception forms the heart of the apartment, providing a spacious living area with ample room for a dining table, perfect for hosting. Adjacent through an archway, the kitchen boasts an ergonomic layout with plenty of storage and a sociable design. The peaceful bedroom is well-proportioned, offering generous wardrobe space and a cosy carpeted finish. A modern bathroom, with a double-ended bathtub and overhead shower, adds a fresh, stylish touch. Additional storage is available via a convenient entrance hallway cupboard. Residents benefit from two lush communal gardens, including one with a built-in BBQ and picnic benches, perfect for summer gatherings. With visitor parking, secure bike storage by arrangement, and an unbeatable location, this charming apartment is an excellent opportunity for city living.

Council tax band D EPC rating C (77)

Features

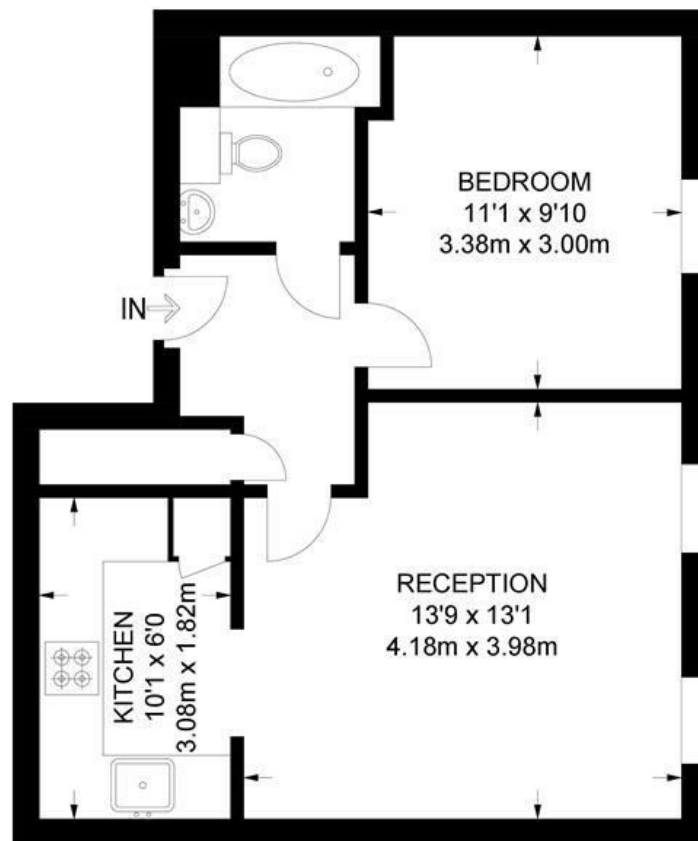
- One double bedroom
- Two resident's gardens
- Secure gated mews development
- Bright and private
- Peaceful position within the building
- Secure bike storage by arrangement
- Central quiet location, close to the action
- Walking distance to Northern and Victoria lines
- Commute to central London in ten-fifteen minutes



Belvedere Place, Brixton, SW2

Belvedere Place, SW2
1 Bedroom Flat

APPROXIMATE GROSS INTERNAL AREA: **440 SQ FT / 41 SQ M**



THIRD FLOOR



While we try our very best, floor plans are produced as a guide only and we take no responsibility for the precise accuracy with which any property is represented.

Belvedere Place, Brixton, SW2

