



Medora Road, Brixton, SW2

2 bedroom flat - conversion for sale

£490,000

Share of Freehold

Property Details

Set over the upper floors of a Victorian terraced house, this spacious two-bedroom flat on a peaceful and friendly street offers privacy, natural light, and over 800 square feet of living space. The substantial reception room spans the building's width, featuring high ceilings, multiple sash windows, and an elegant bay. With an original fireplace adding grandeur, this versatile space is ideal for relaxing, hosting, or working from home. At the rear, the contemporary dine-in kitchen boasts sleek cabinetry, wooden worktops, and fresh blue tiles, offering ample storage and a sociable space for cooking and dining. Both double bedrooms enjoy leafy rear views and are thoughtfully separated, making the property ideal for sharers or renting out a room. The principal bedroom includes a charming fireplace and space for a desk or dressing table. A bright bathroom, conveniently positioned between the bedrooms, features a double-ended bath with an overhead shower and practical shelving. Additional storage, including a loft, completes this charming home, situated on a quiet and neighbourly residential road.

Council tax band D

EPC rating D (62)

Features

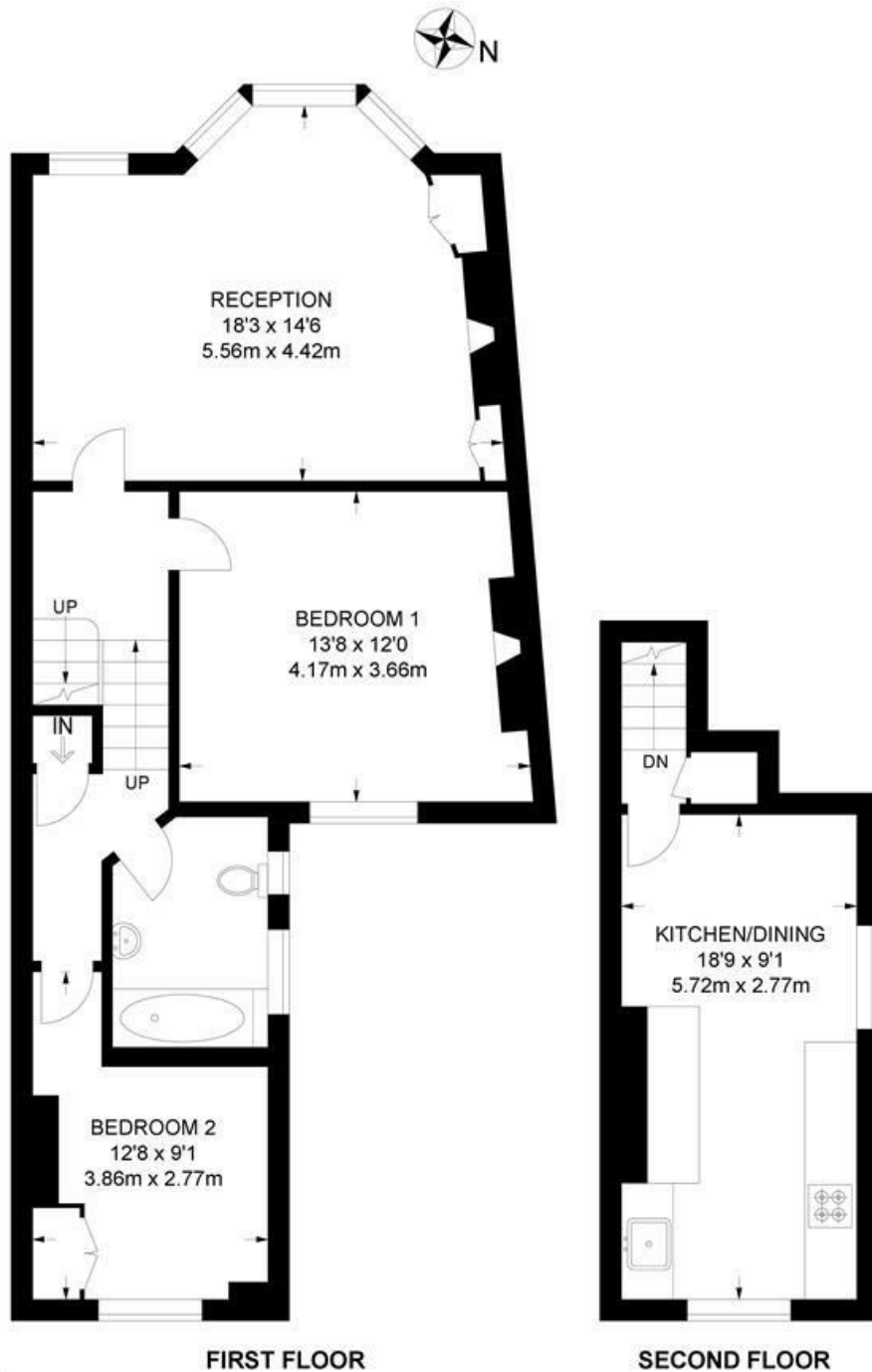
- Two double bedrooms
- Victorian conversion
- Over 800 square feet
- Split over two floors
- Fifteen-minute walk to Brixton tube station
- Close to Brockwell Park
- Local parade of shops and cafes moments away
- Share of freehold
- Chain-free



Medora Road, Brixton, SW2

Medora Road, SW2
2 Bedroom Flat

APPROXIMATE GROSS INTERNAL AREA: **832 SQ FT / 77 SQ M**



While we try our very best, floor plans are produced as a guide only and we take no responsibility for the precise accuracy with which any property is represented.

Medora Road, Brixton, SW2

