



Kellett Road, Brixton, SW2

2 bedroom flat - conversion for sale

£535,000

Leasehold

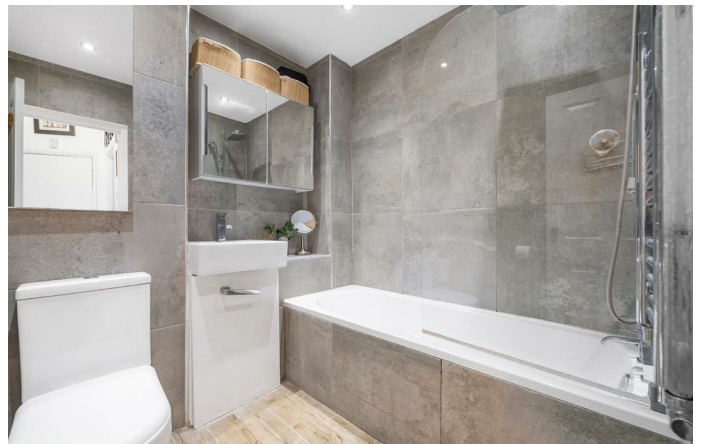
Property Details

An appealing two double bedroom flat with a study and private garden in an end-of-terrace Victorian townhouse. Tasteful and stylish, this period flat offers contemporary décor alongside an attractively airy atmosphere. The heart of the home is the open-plan reception, with a cosy lounge, space to dine and a modern kitchen. Leading off this sociable space is the wrap-around private garden, a sunny spot enjoying additional light due to the end-of-terrace position, with precedent set to extend should the purchaser wish to seek permissions. Two double bedrooms occupy the front of the property, one with large bay window and the second peacefully overlooking the garden. With similarly leafy views, a separate study is nestled to the rear of the home. A luxurious bathroom is finished with large tiling and a rain shower over bathtub, ideal for a relaxing soak in the bubbles after a jog around nearby Brockwell Park. Last but not least, there is access to a cellar ideal for storage yet currently boarded over. Early registration of interest is advised.

Features

- Two double bedrooms
- Private South-facing garden
- Study
- End of terrace Victorian conversion
- Potential to extend STNP
- Sought-after location close to transport links
- Central Brixton on the doorstep
- Herne Hill a ten-minute stroll
- Brockwell Park nearby
- Chain-free

Council tax band B EPC rating D (68)



Kellett Road, Brixton, SW2

Kellett Road, SW2

2 Bedroom Flat

APPROXIMATE GROSS INTERNAL AREA: **574 SQ FT / 53.3 SQ M**



While we try our very best, floor plans are produced as a guide only and we take no responsibility for the precise accuracy with which any property is represented.

Kellett Road, Brixton, SW2

