

Taybridge Road, Battersea, SW11

4 bedroom flat - conversion for sale

£835,000

Leasehold

Property Details

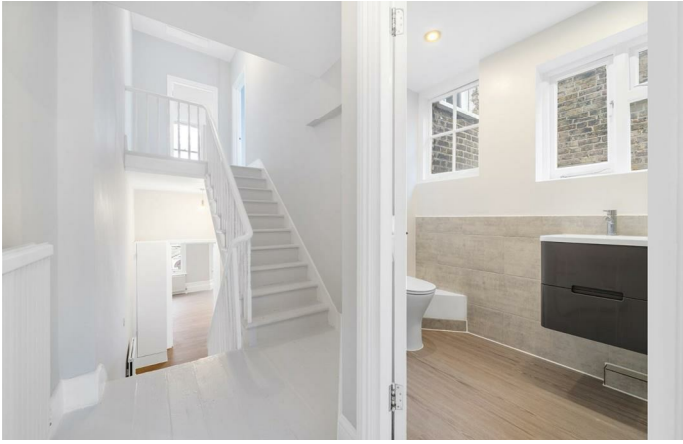
A superb four-bedroom split-level refurbished apartment within a handsome Victorian property, located moments from Clapham Old Town with Clapham Common at the top of the street, combining exceptional internal space with a prime location. Spanning over 1,250 square feet across the upper floors, the property benefits from an abundance of natural light throughout. The heart of the home is the expansive reception room, with large arched sash windows, elegant décor, and features including picture rails and tall skirting boards. This inviting space comfortably accommodates both relaxation and dining. Adjacent, the brand-new kitchen offers a stylish, wrap-around design with contemporary cabinetry and ample worktop space. The property boasts four versatile bedrooms, three with leafy views and the fourth spanning over five meters wide. A newly fitted bathroom in neutral tones features a bathtub with an overhead shower, perfect for unwinding after enjoying nearby Clapham Common. This spacious home is ready to move into, offering comfort and scope for personal touches.

Features

- Four bedrooms
- Victorian conversion
- Newly refurbished throughout
- Over 1,250 square feet
- Prime location
- Clapham Common at the end of the street
- Local amenities of Clapham Old Town
- Northern Line and Overground within walking distance
- Chain-free

Council tax band E EPC rating D (68)





Taybridge Road, Battersea, SW11

Taybridge Road, SW11
4 Bedroom Flat

APPROXIMATE GROSS INTERNAL AREA: 1271 SQ FT / 118 SQ M



While we try our very best, floor plans are produced as a guide only and we take no responsibility for the precise accuracy with which any property is represented.

Taybridge Road, Battersea, SW11

