



Medwin Street, Clapham, SW4

2 bedroom flat for sale

£465,000

Leasehold

Property Details

An enticing two bedroom apartment with a private garden and bedroom terrace, plus it's own private entrance, in a charming Victorian property. This delightful period home offers an exciting opportunity to add your own decorative stamp. Spanning almost 600 square feet, the property features an open plan reception bathed in natural light, thanks to its beautiful bay window. This sociable space seamlessly connects to a wrap-around kitchen, making it ideal for entertaining or enjoying quiet evenings. Both bedrooms are nestled to the rear, with the versatility to repurpose one to suit other needs if desired, such as a home office. The principal bedroom is particularly noteworthy, as it boasts direct access to a private terrace, a wonderful spot for morning coffee or evening relaxation. From the terrace, steps lead up to a lovely raised garden, low-maintenance and ready to be used the moment the weather permits with the potential to landscape into a serene escape from the hustle and bustle of city life. Conveniently set in the centre of the home the bathroom is tastefully neutral, with a bathtub plus overhead shower. Share of freehold will be granted upon the sale of final flat in the building.

Council tax band C **EPC rating D (68)**

Features

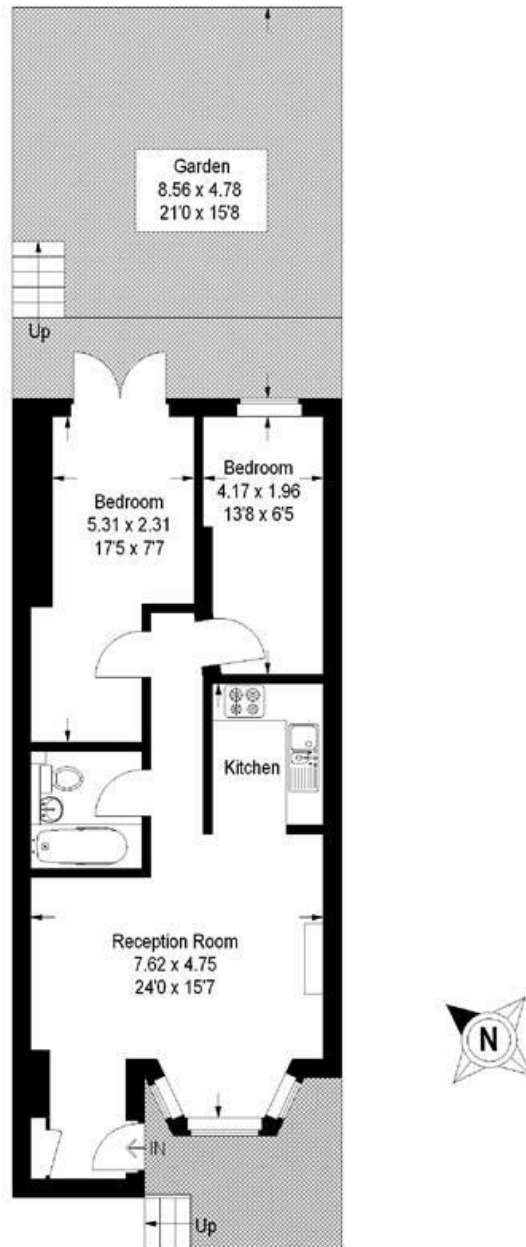
- Two bedrooms
- Private garden and bedroom terrace
- Victorian conversion
- Own front door
- Exciting opportunity to add your own stamp
- Central Brixton a six-minute stroll
- Clapham High street a nine-minute walk
- Victoria and Northern lines
- Chain-free
- Share of freehold will be granted



Medwin Street, Clapham, SW4

Medwin Street, SW4 2 Bedroom Flat

APPROXIMATE GROSS INTERNAL AREA: 590 SQ FT / 54.8 SQ M



While we try our very best, floor plans are produced as a guide only and we take no responsibility for the precise accuracy with which any property is represented.

Medwin Street, Clapham, SW4

