



Lambert Road, Brixton, SW2

2 bedroom flat - conversion for sale

£850,000

Leasehold

Property Details

An exceptional two bedroom, two bathroom Victorian garden flat, in a handsome detached property on the desirable Lambert Road. Boasting over 1,150 square feet, this beautifully presented home offers a unique and versatile layout. The spacious reception is set beneath ornately corniced ceilings, with a charming fireplace and large bay window creating a bright and airy retreat. Overlooking the garden, the dining room is ideal for entertaining, with French doors seamlessly connecting the indoor and outdoor spaces. The separate kitchen is tastefully finished with contemporary cabinetry, stylish tiling, and bi-folding doors to the garden. Freeing up space in the kitchen, a practical utility room in the cellar adds further convenience. The tranquil garden is larger than average and a true escape, offering ample space for dining al-fresco, gardening or relaxation. Both bedrooms are generous doubles, separated from one another for privacy, one with a lovely bay window and fireplace, the other with a flurry of fitted wardrobes and French doors to the garden, suited to relaxing mornings. Two well-appointed bathrooms complete this impressive home.

Features

- Two double bedrooms
- Two bathrooms
- Expansive private garden
- Detached Victorian conversion
- Over 1,150 square feet
- Utility cellar
- Beautifully presented throughout
- Local amenities and eateries on the doorstep, including schools
- Victoria and Northern Lines
- Chain-free

Council tax band D EPC rating D (58)

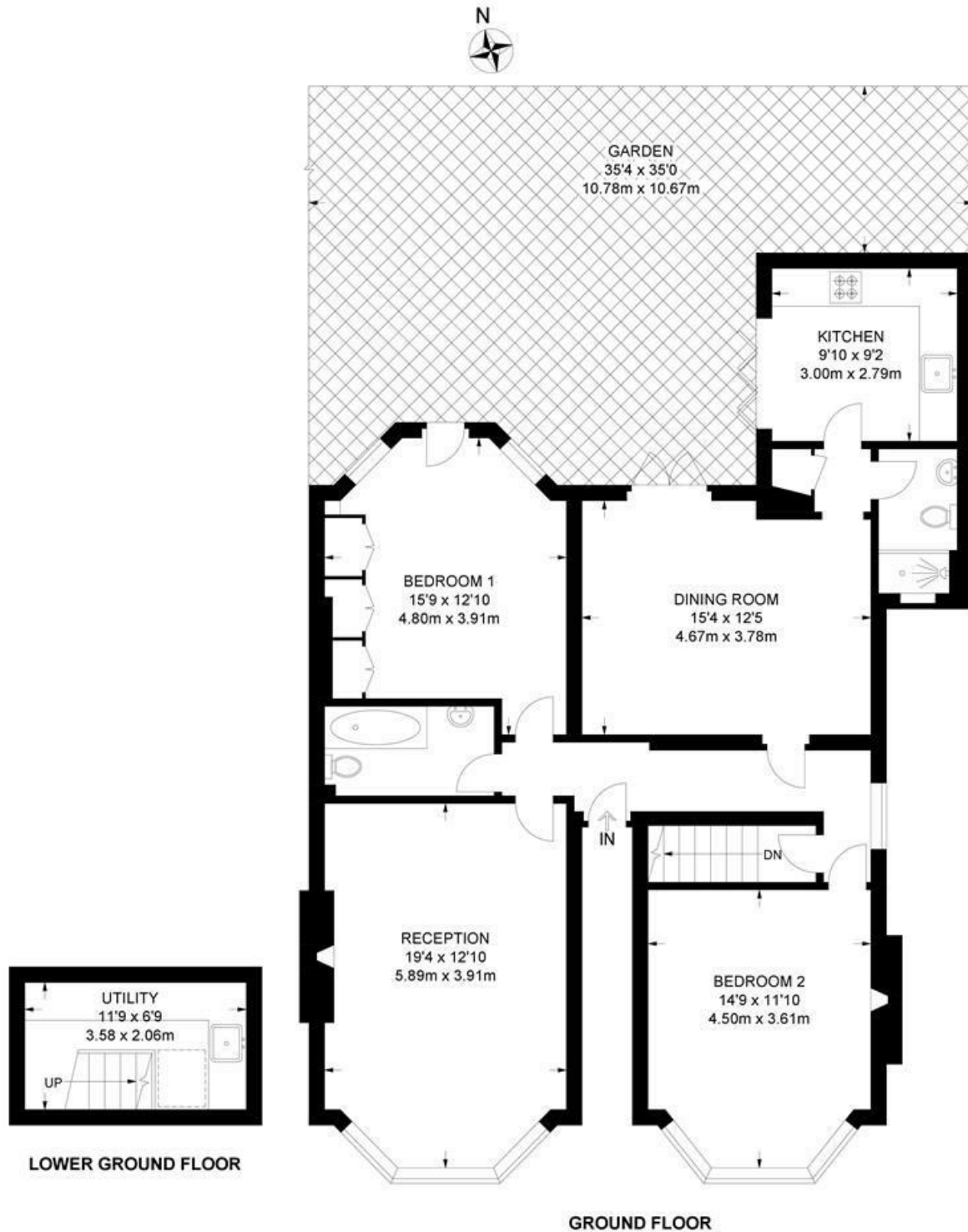




Lambert Road, Brixton, SW2

Lambert Road, SW2
2 Bedroom Flat

APPROXIMATE GROSS INTERNAL AREA: **1167 SQ FT / 108.4 SQ M**



While we try our very best, floor plans are produced as a guide only and we take no responsibility for the precise accuracy with which any property is represented.

