



**Leander Road, Brixton, SW2**

1 bedroom flat for sale

**£365,000**

Leasehold

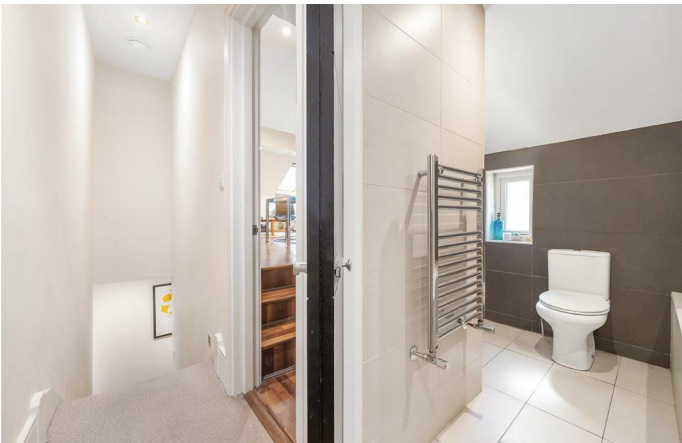
## Property Details

A bright and elegant one double bedroom Victorian flat on a highly sought-after neighbourly street. Recently refreshed, the property has new kitchen cabinets, brand new carpets and has been repainted throughout. A truly lovely home feeling instantly liveable the moment you step inside. Set to the upper floors, ensuring a bright and private ambience throughout. One of the key selling points is the fantastic open plan living kitchen area, flooded by natural light through the skylights and window with views across the roof tops. The kitchen provides all you need in terms of worktop and storage space within sleek, gloss cabinetry. Ideal for hosting, the reception area provides generous space for a large dining table whilst still having plenty of room for a comfortable lounge for those cosy nights in. Keeping the home clutter free, there is access into the eaves for storage. The split level aspect adds to the spacious feel with stairs leading down to the bedroom, a comfortable double tucked away quietly at the rear with leafy views. Just adjacent is the contemporary bathroom, styled with luxuriously large tiles and equipped with a bathtub plus overhead shower. Close to the action but far enough away to offer a calm and sleepy feel.

Council tax band C    EPC rating D (62)

## Features

- One double bedroom
- Victorian conversion
- Bright and airy
- Recently refreshed throughout
- Sought-after residential street
- Central Brixton a fourteen-minute walk
- Brockwell Park a five-minute walk
- Herne Hill a ten-minute stroll through the park
- Large brand supermarket in five minutes
- Chain-free



Leander Road, Brixton, SW2

**Leander Road, SW2**  
**1 Bedroom Flat**

APPROXIMATE GROSS INTERNAL AREA: **575 SQ FT / 53.4 SQ M**



While we try our very best, floor plans are produced as a guide only and we take no responsibility for the precise accuracy with which any property is represented.

Leander Road, Brixton, SW2

