

Abbeville Road, Clapham, SW4

1 bedroom flat for sale

£445,000

Leasehold

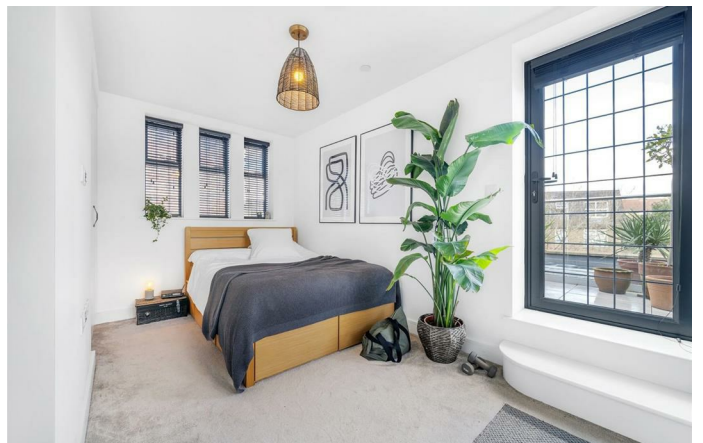
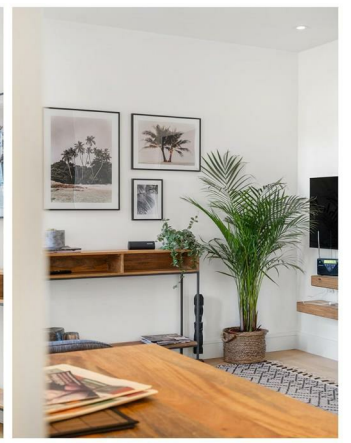
Property Details

This stunning one-bedroom modern apartment is set within a secure gated development on sought-after Abbeville Road in Clapham. Boasting a luxurious finish, contemporary Crittall-style windows, and a private roof terrace, this elegant home offers stylish city living with five years remaining on the build warranty. The development features beautifully maintained communal grounds, including a lawn and bike storage. The open-plan living space is both stylish and functional, with a sleek kitchen running along one wall, featuring contrasting cabinetry, integrated appliances, and ambient worktop lighting—perfect for dining and entertaining. The lounge is bathed in natural light, with contemporary décor and modern flooring adding a cosy touch. The serene bedroom offers plush carpeting, bespoke fitted wardrobes, and direct access to the terrace ideal for slow weekend mornings or evening stargazing. The bathroom is luxurious, complete with a walk-in shower, chic floating under-sink storage, and sophisticated tiling. A stylish and contemporary home in a prime location, offering the best of Clapham living.

Features

- One double bedroom
- Private roof terrace
- Secure gated modern build
- Outstanding build warranty
- Well-kept lawn and bike storage
- Stylish finish
- Prime location
- Up-market Abbeville Village moments away
- Northern Line an eight-minute walk
- Clapham Common a five-minute stroll

Council tax band D EPC rating C (74)

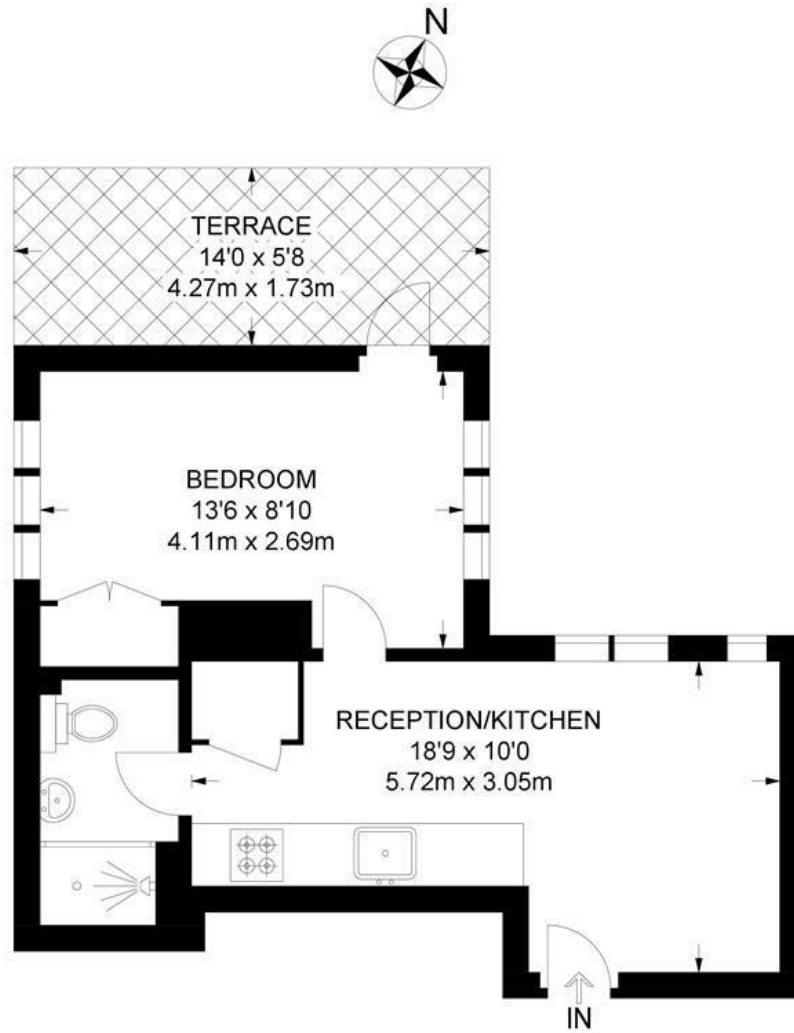




Abbeville Road, Clapham, SW4

Abbeville Road, SW4
1 Bedroom Flat

APPROXIMATE GROSS INTERNAL AREA: **322 SQ FT / 29.9 SQ M**



FIRST FLOOR



While we try our very best, floor plans are produced as a guide only and we take no responsibility for the precise accuracy with which any property is represented.

Abbeville Road, Clapham, SW4

