



**Brickfield Road, Clapham, SW4**

2 bedroom flat for sale

**£475,000**

Leasehold

## Property Details

This fantastic two double-bedroom, two-bathroom apartment boasts a private South-facing garden terrace within a modern development featuring communal lawns. Offering high energy efficiency and well-proportioned rooms, this lovely home provides the perfect balance of Clapham's vibrant atmosphere and a tucked away retreat in Clapham Park, with amenities on the doorstep. Spanning over 800 square feet, the apartment is finished in a contemporary style, designed for modern living. The impressive open-plan reception and dining room offers ample space to relax and entertain, with double doors opening onto the low-maintenance terrace, complete with a sunny aspect and outdoor lighting for evening enjoyment. A separate kitchen is fully equipped with integrated appliances, generous worktops, and storage. Both bedrooms are spacious and set on opposite sides of the property allowing privacy for each. One benefits from an en-suite, while a stylish main bathroom with a bathtub and overhead shower sits centrally. Further perks include on-street parking permits by separate arrangement. An ideal home in a sought-after location.

## Features

- Two double bedrooms
- Two bathrooms
- South-facing garden terrace
- Secure modern development
- Over 800 square feet
- Local shops and amenities
- Abbeville Village and Clapham High Street nearby
- Northern line a short stroll away
- Gym less than a five-minute stroll
- Parking permits available

Council tax band D    EPC rating B (82)

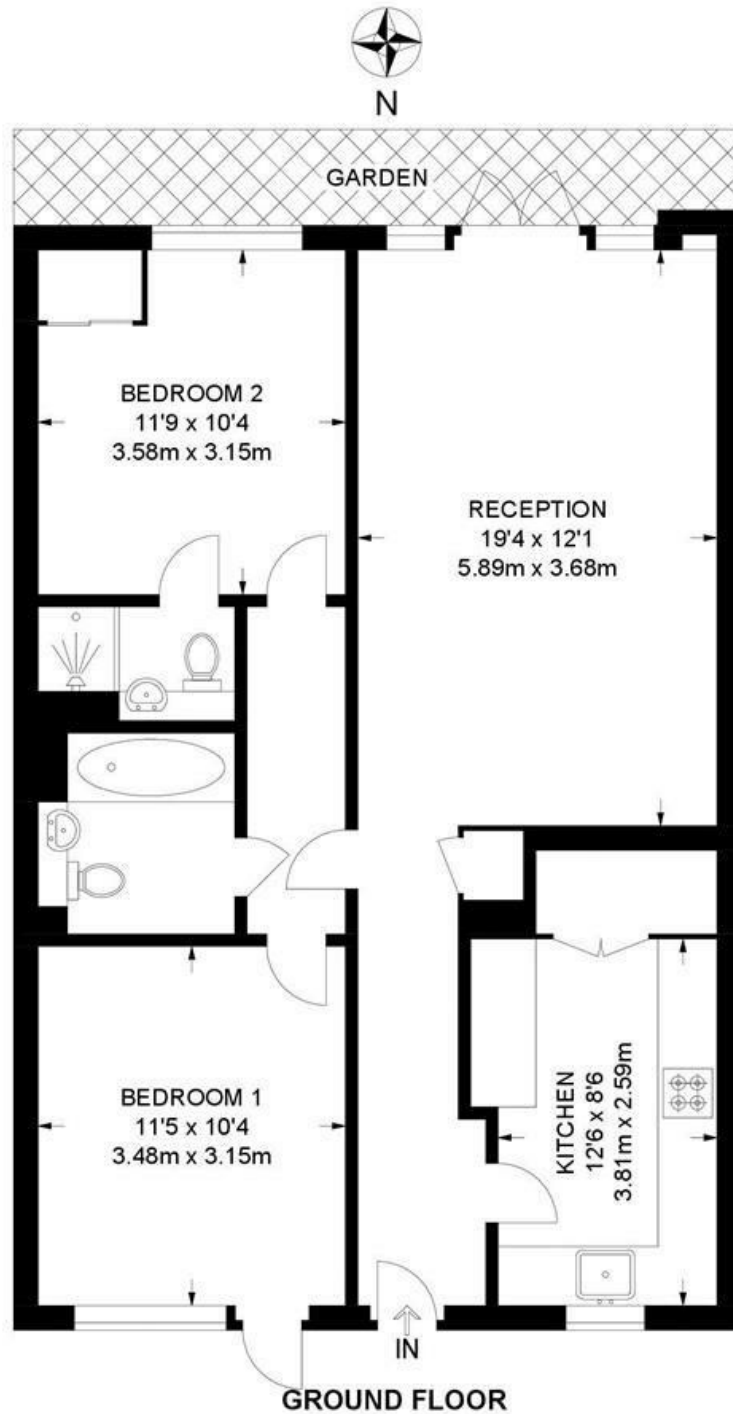




Brickfield Road, Clapham, SW4

**Brickfield Road, SW2**  
**2 Bedroom Flat**

APPROXIMATE GROSS INTERNAL AREA: 821 SQ FT / 76.2 SQ M



While we try our very best, floor plans are produced as a guide only and we take no responsibility for the precise accuracy with which any property is represented.

Brickfield Road, Clapham, SW4

